

RAILROAD

NEW YORK CENTRAL

900/16°04  
104065  
312195°0

104065  
40  
412200°0

PPN 06-25-008-000-???  
06-25-009-000-???

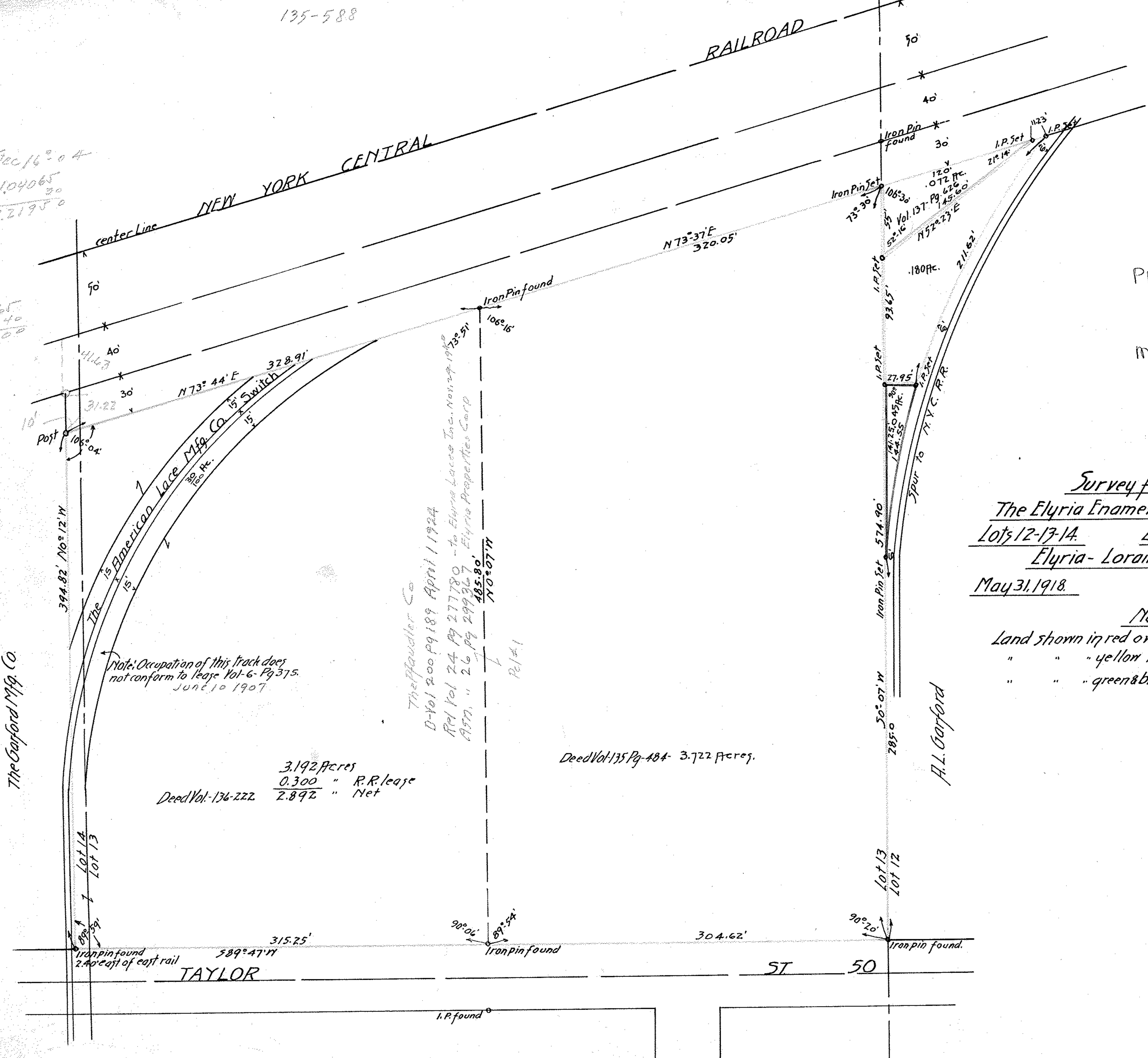
MAP PG 6-108

Survey for  
The Elyria Enamelled Products Co.,  
Lots 12-13-14 East of Black River.  
Elyria-Lorain Co., Ohio

May 31, 1918.

Warden & Laundon,  
Engineers.

Note:  
Land shown in red owned by The Elyria Enamelled Products Co.  
" " " yellow leased " " " "  
" " " green & blue to be acquired by " " " "



Note: Occupation of this track does not conform to lease Vol. 6- Pg 375. June 10 1907

3.192 Acres  
0.300 " R.R. lease  
2.892 " Net  
Dead Vol. 136-222

Dead Vol 135 Pg 484- 3.722 Acres.

Theffaudler Co  
D-Vol 200 Pg 189 April 1 1924

Rel Vol 24 Pg 277780 - to Elyria Laces Inc. Nov 29 1906  
A577, " 26 pg 299367, Elyria Properties Corp

The Garford Mfg. Co.

A.L. Garford

TAYLOR

ST 50

H00408 A