

4

# MAP OF SURVEY MADE FOR LEO J. & CELIA S. SCHNEIDER. Lot 20, Ridgeville Twp, Aug 27, 1925.

Lorain County, Ohio

Distances are given in feet and decimal parts

Scale, 1 in. = 200 Feet

~~Elyria, O.~~

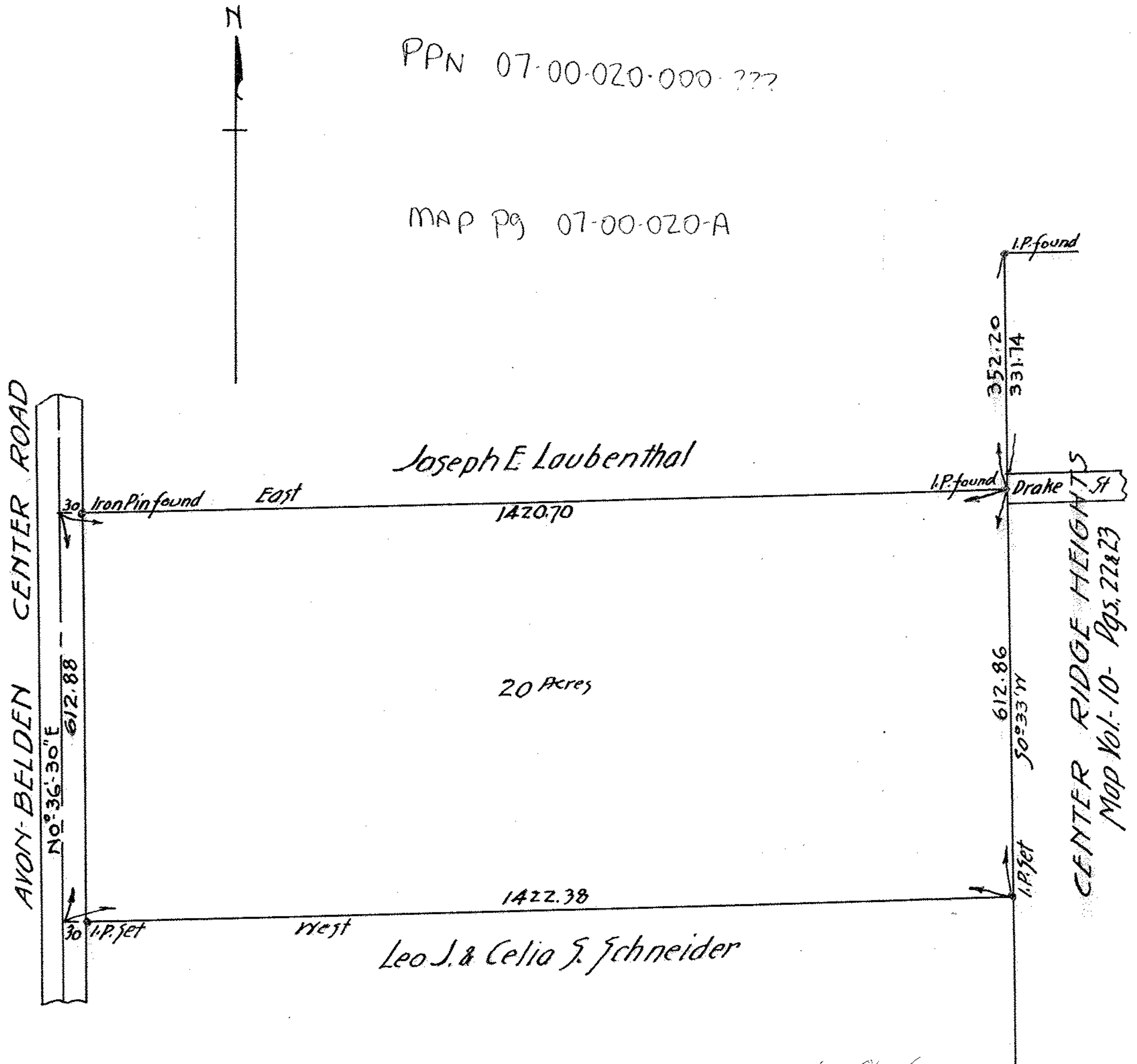
Order No.,

F. B. 29 Pg., 73.

Warden & Laundon, C. E.  
403 ELYRIA BLOCK  
ELYRIA, O.

PPN 07-00-020-000-???

MAP pg 07-00-020-A



400 408 E