

400 831

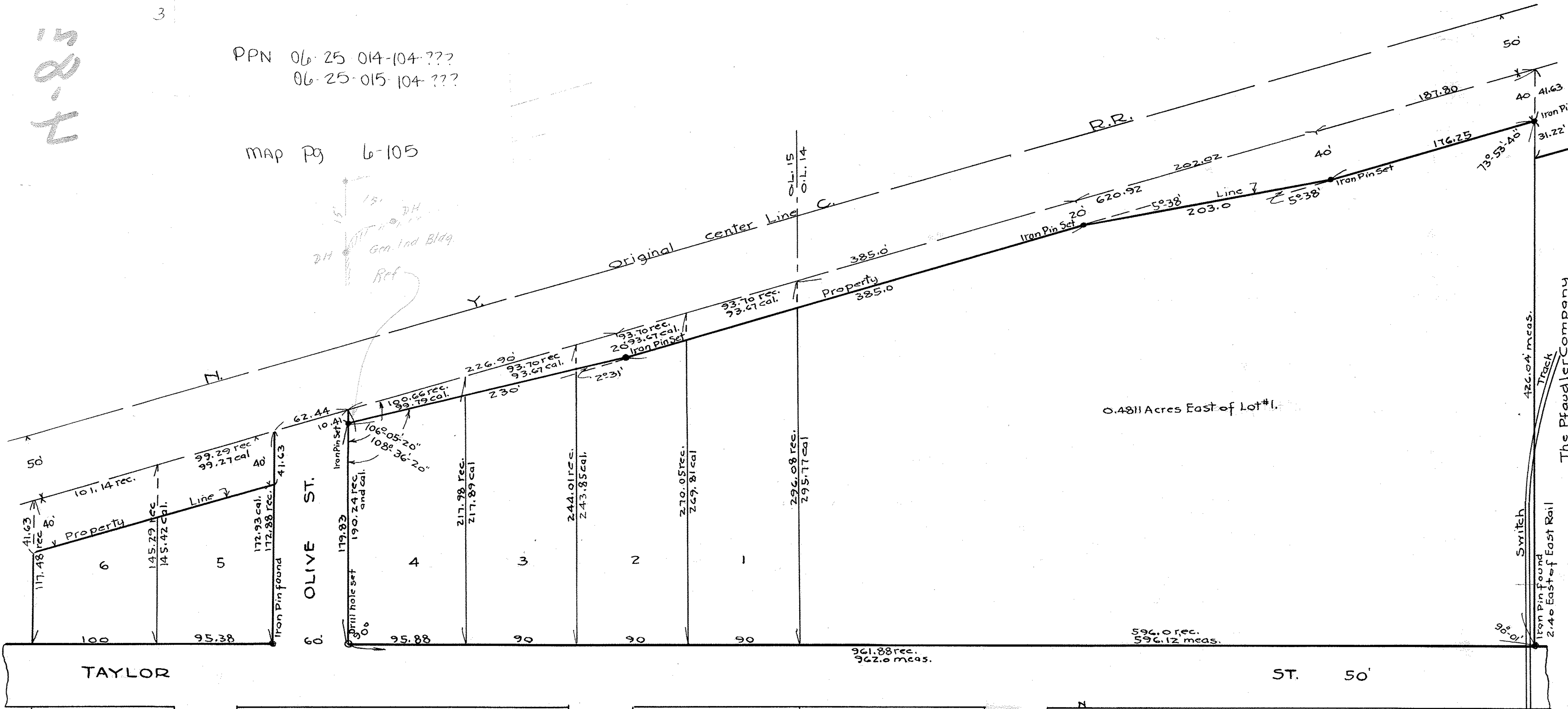
3

15
21
T

PPN 06-25-014-104-???
06-25-015-104-???

MAP Pg 6-105

151
214
Gen. Ind Bldg.
Ref



0.4811 Acres East of Lot #1.

TAYLOR

ST. 50'

J.W. Warden
Registered Surveyor.

Survey for
GENERAL INDUSTRIES CO.,
Original Lots 14-15, East of East Branch of Black River
Lots 1-2-3-4-5-6- Avondale Park Allotment,
Map Vol-6- Pg. 2.
Elyria Township, Elyria City, Lorain Co., O.
Scale 1"=60'.
March 29, 1941.