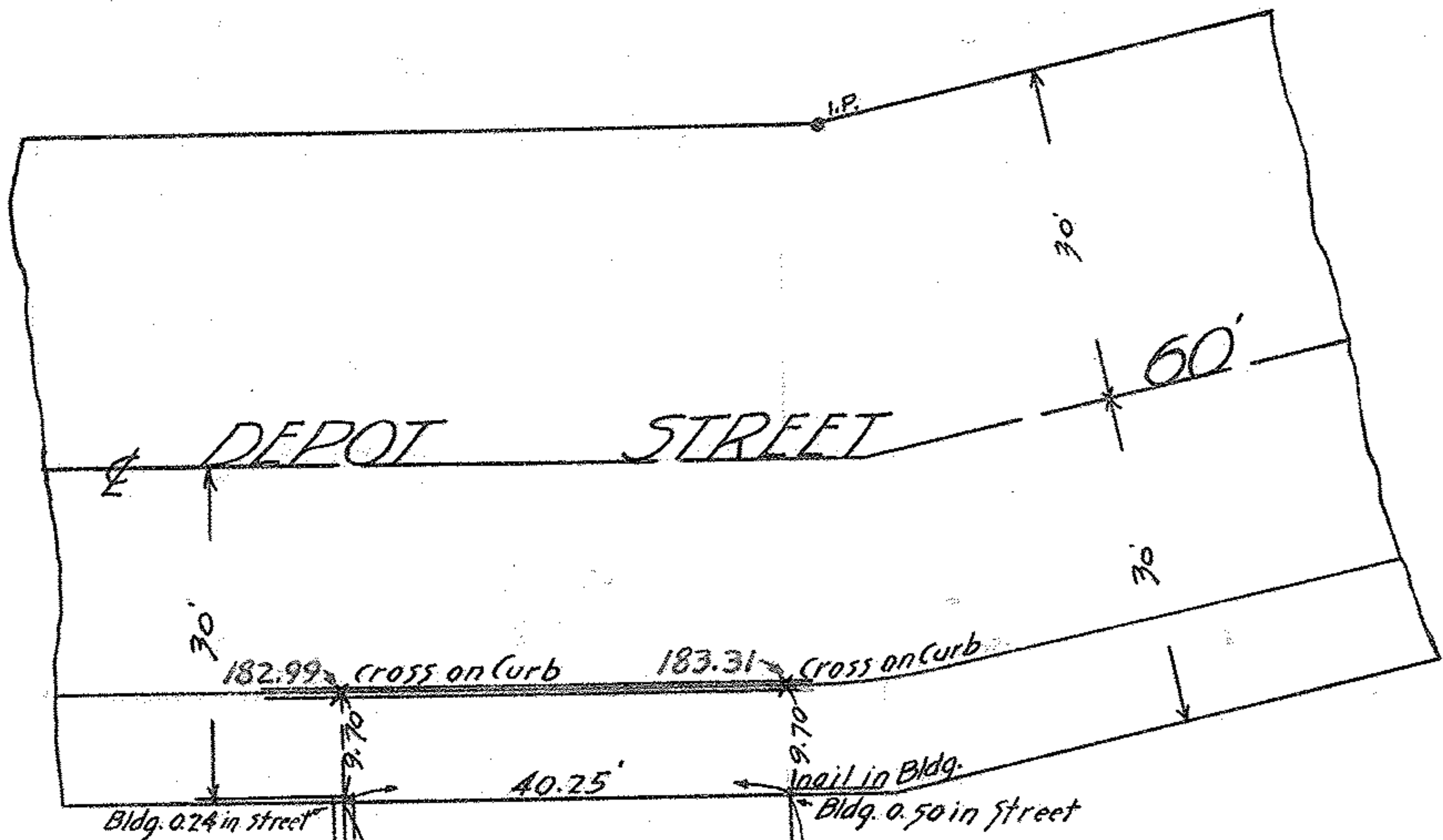


900277B



Survey for  
 John & Ralph Murbach  
 Lots 87-88. Block #82.  
 Original Village Plat of Elyria.  
 Recorded Map Vol. 3-Pg. 15.  
 Elyria - Lorain Co., Ohio.  
 Scale 1 inch = 20 feet.  
 June 8-1917. J. Woodward.  
 Surveyor.

= Elevations shown in red. =

mark on walk  
 West line Washington Ave.

East line Washington Ave.

West line Ely (Cheshire Block)

18" brick wall

75.19'

A. W. Ewington

75.19'

cross on walk  
 West line Eastline

175.54 rec.  
 179.90 meas

191.86'

15.8'

191.56'

15.8'

49.50'

40.25'

191.80'

15.8'

191.37'

15.8'

405.75 rec.  
 406.14 meas.

PPN 06-26-082-000-???

MAP pg 6-120

Stone & Mill St.

BROAD STREET 9'