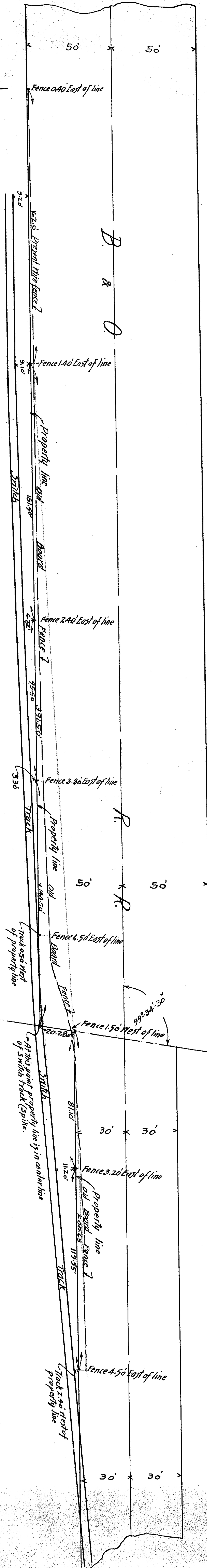
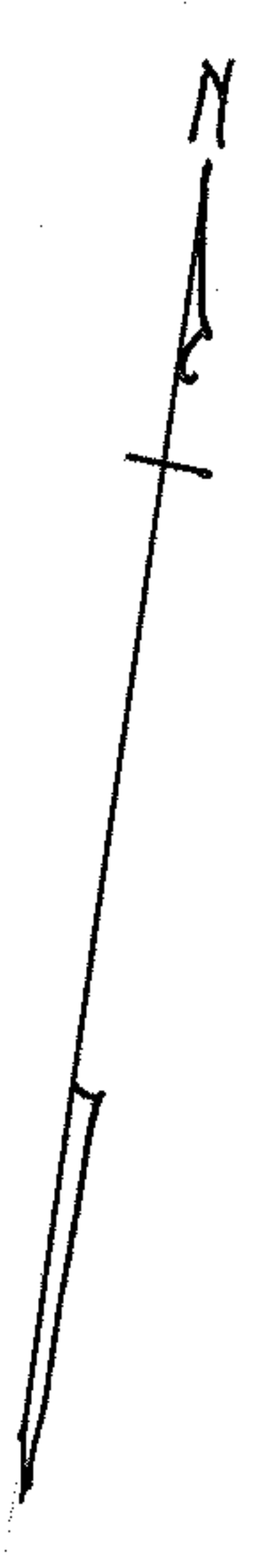


900596

d-240



PPN 06.23.009-500.019  
 010-500-019  
 MAP PG 625

Property line survey for  
**THE FOX FURNACE CO.**  
 Lots 9 & 10, West of Black River, Elyria, Ohio.  
 June 24, 1929.  
 Scale 1 inch = 30 feet.  
 Charles S. Saunders,  
 Civil Engineer.

4