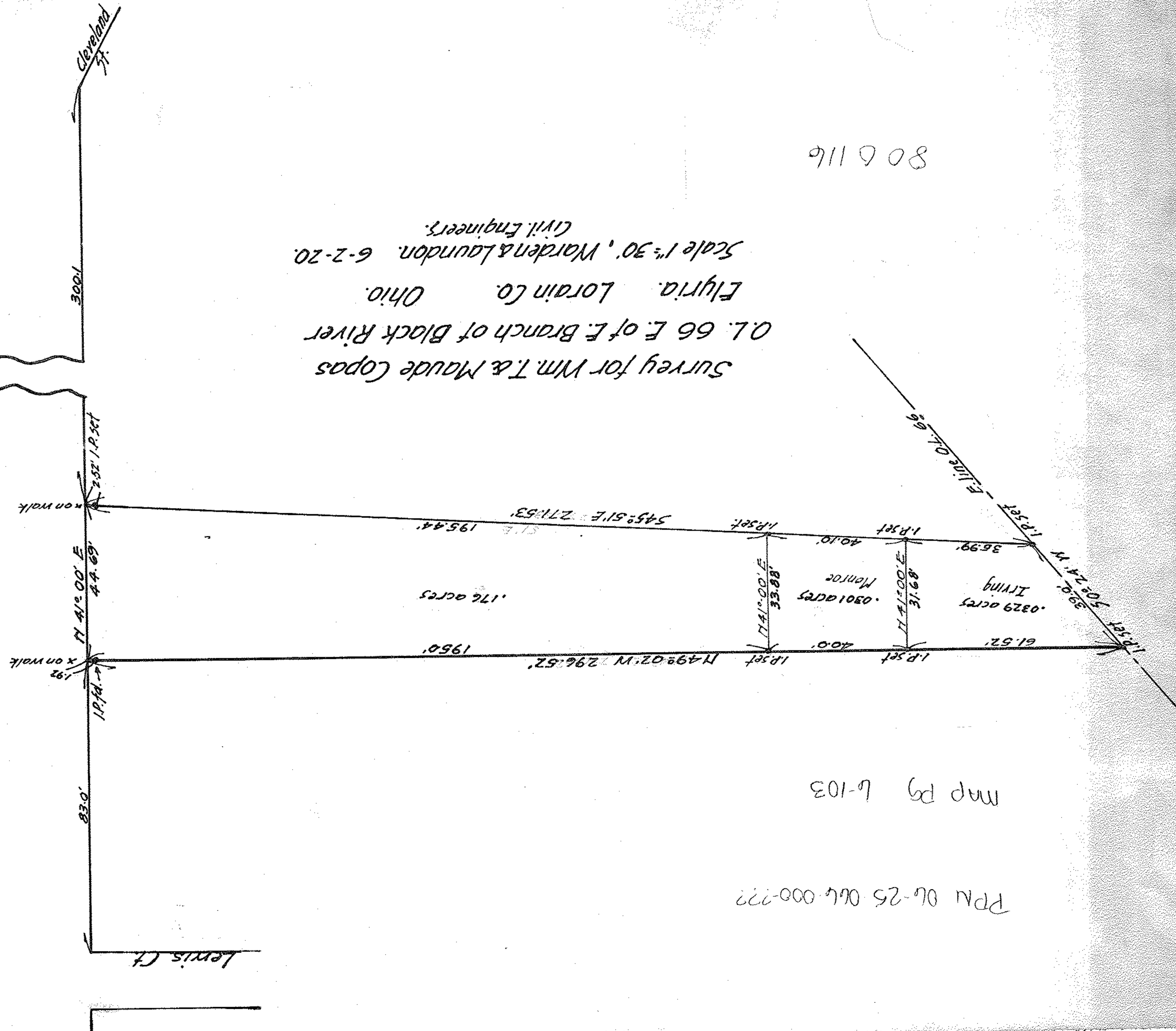


806116

Survey for Wm. T. & Maude Copas  
0.166 E. of E. Branch of Black River  
Flyria, Lorain Co. Ohio.  
Scale 1"=30', Warden & Laudon. 6-2-20.  
Civil Engineers.



map pg 6-103

PPM 06-25 064 000-???

8-116

East Bridge St 66

Cleveland St

Lewis Ct

300'

83.0'

N 41° 00' E  
44.69'

2.52' I.P. set

1.92' x on walk

195.44'

S 45° 51' E 271.53'

195.0'

N 49° 02' W 296.52'

40.10'

36.99'

.0301 acres  
Manroe

.0329 acres  
Irving

N 41° 00' E  
33.88'

N 41° 00' E  
31.68'

61.52'

39.2'

E 102° 24' W

E line 0.166

I.P. set

I.P. set

I.P. set

I.P. set

I.P. set

I.P. set

non walk

x on walk