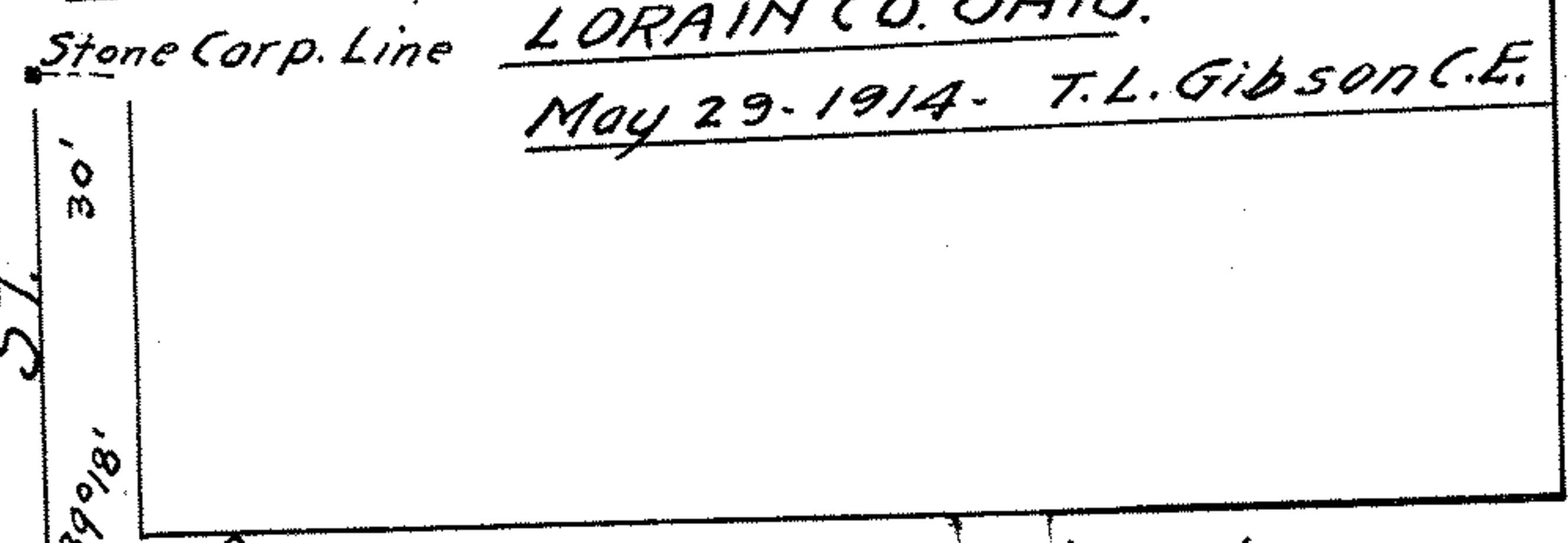


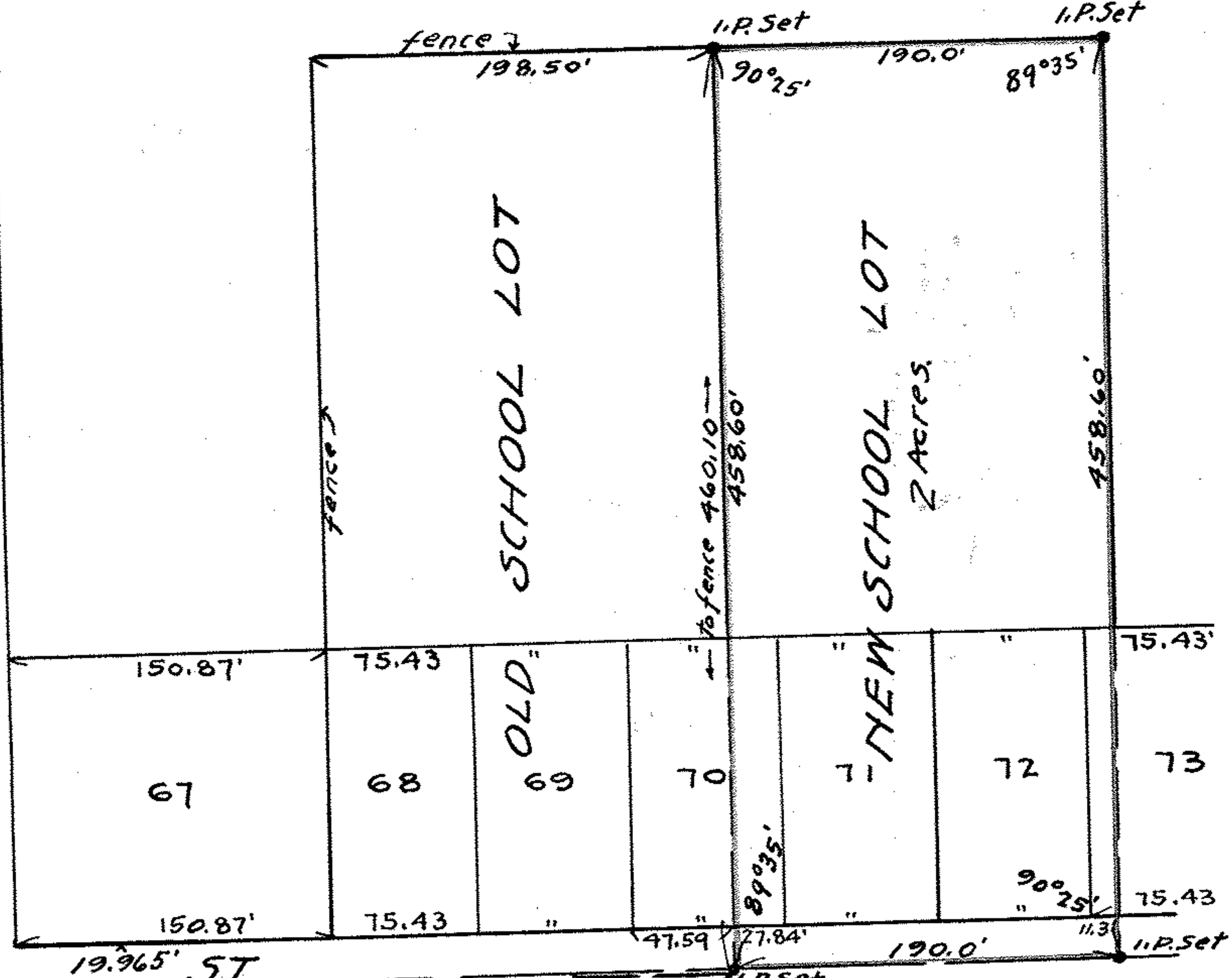
MAP OF SURVEY
FOR
LAGRANGE UNION SCHOOL BOARD.

Wm & Ellen Wilcox Property

O.L.#46- LAGRANGE VIL.
LORAIN CO. OHIO.
May 29-1914. T.L. Gibson C.E.



ST. 39.93'



ST. 30'

NORTH MAIN 373.14'

Stone 89°18'

LIBERTY ST. 490.60' record 879.85'

FOREST 373.14'

COLLEGE ST.

ST 60'

EAST MAIN

PPN-P

PPN 15-00-046-103-???

MAP Pg 15-00-046-A