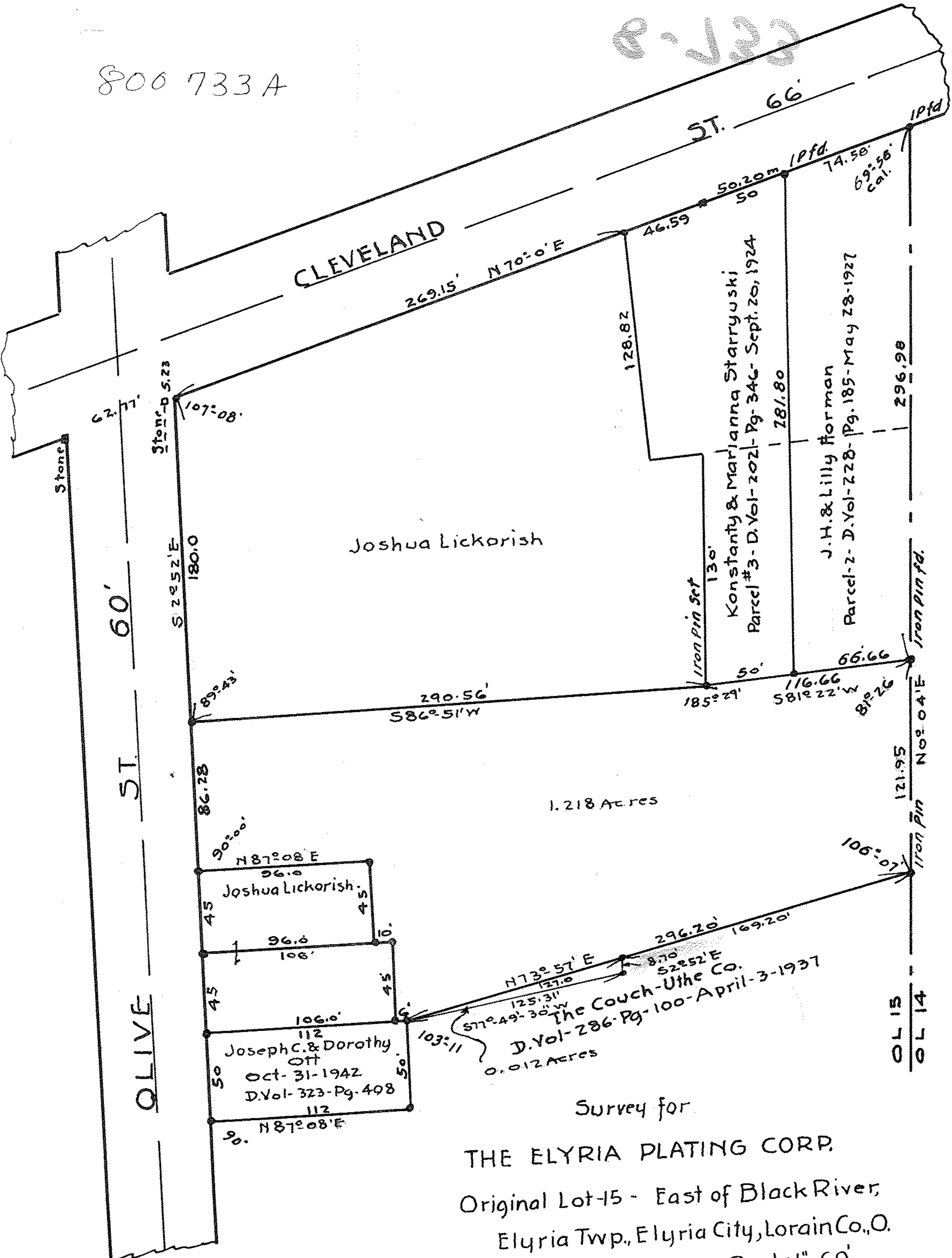


800 733 A

P-133



Survey for
THE ELYRIA PLATING CORP.
 Original Lot-15 - East of Black River,
 Elyria Twp., Elyria City, Lorain Co., O.
 April - 7 - 1943. Scale 1" = 60'.
J.W. Warden, Registered Surveyor.

Note: Parcel of 0.012 Acres surveyed Apr. 13, 1943. J.W.W.