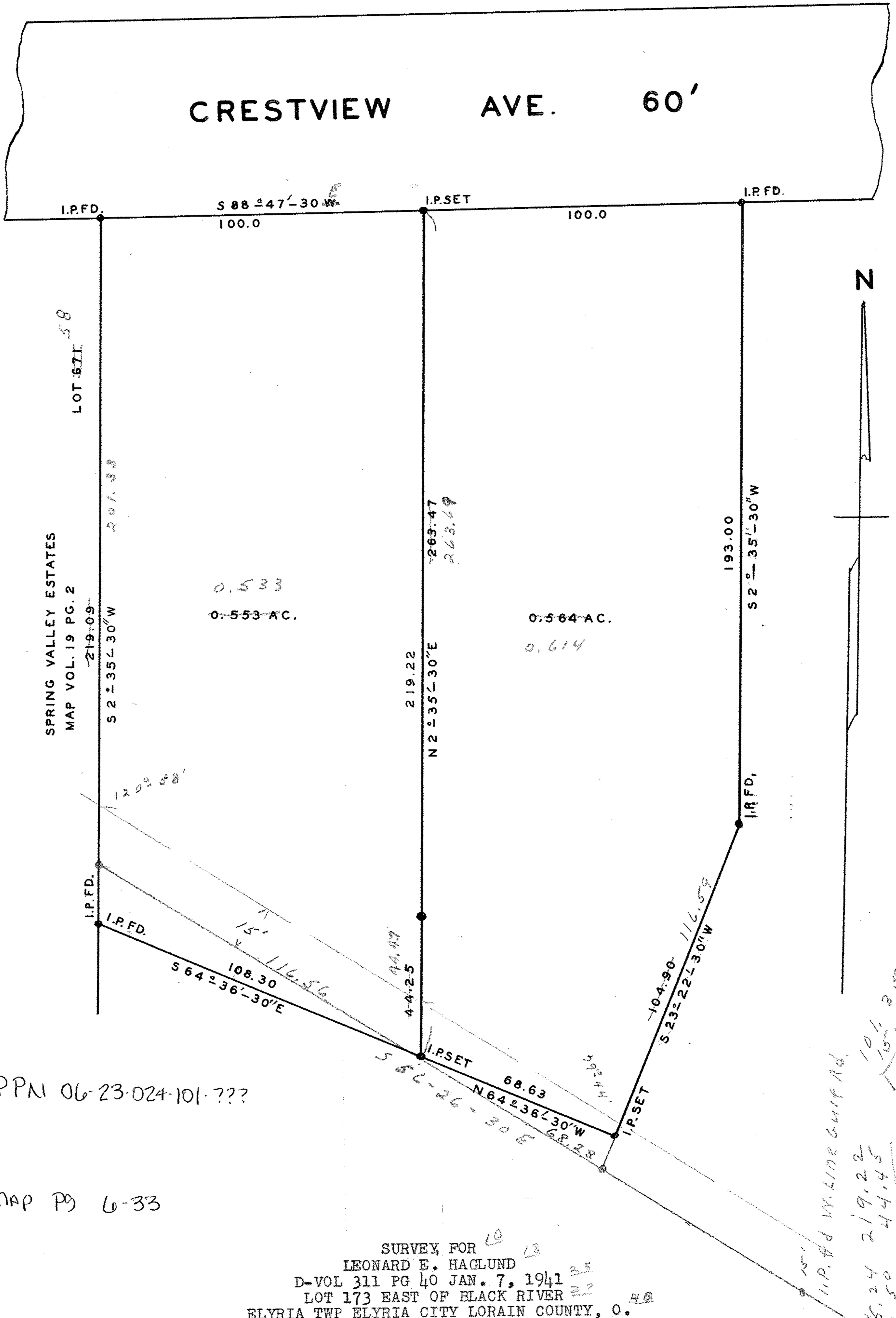


901295D



PPN 06-23-024-101-???

MAP PG 6-33

SURVEY FOR  
 LEONARD E. HAGLUND  
 D-VOL 311 PG 40 JAN. 7, 1941  
 LOT 173 EAST OF BLACK RIVER  
 ELYRIA TWP ELYRIA CITY LORAIN COUNTY, O.  
 SCALE 1" = 30' MAY 31, 1963  
 J. W. WARDEN AND ASSOCIATES REG. SURVEYORS

11.P.FD W. LINE GOLF RD.  
 101.25  
 15.24  
 3.50  
 11.74  
 219.22  
 44.45  
 263.67