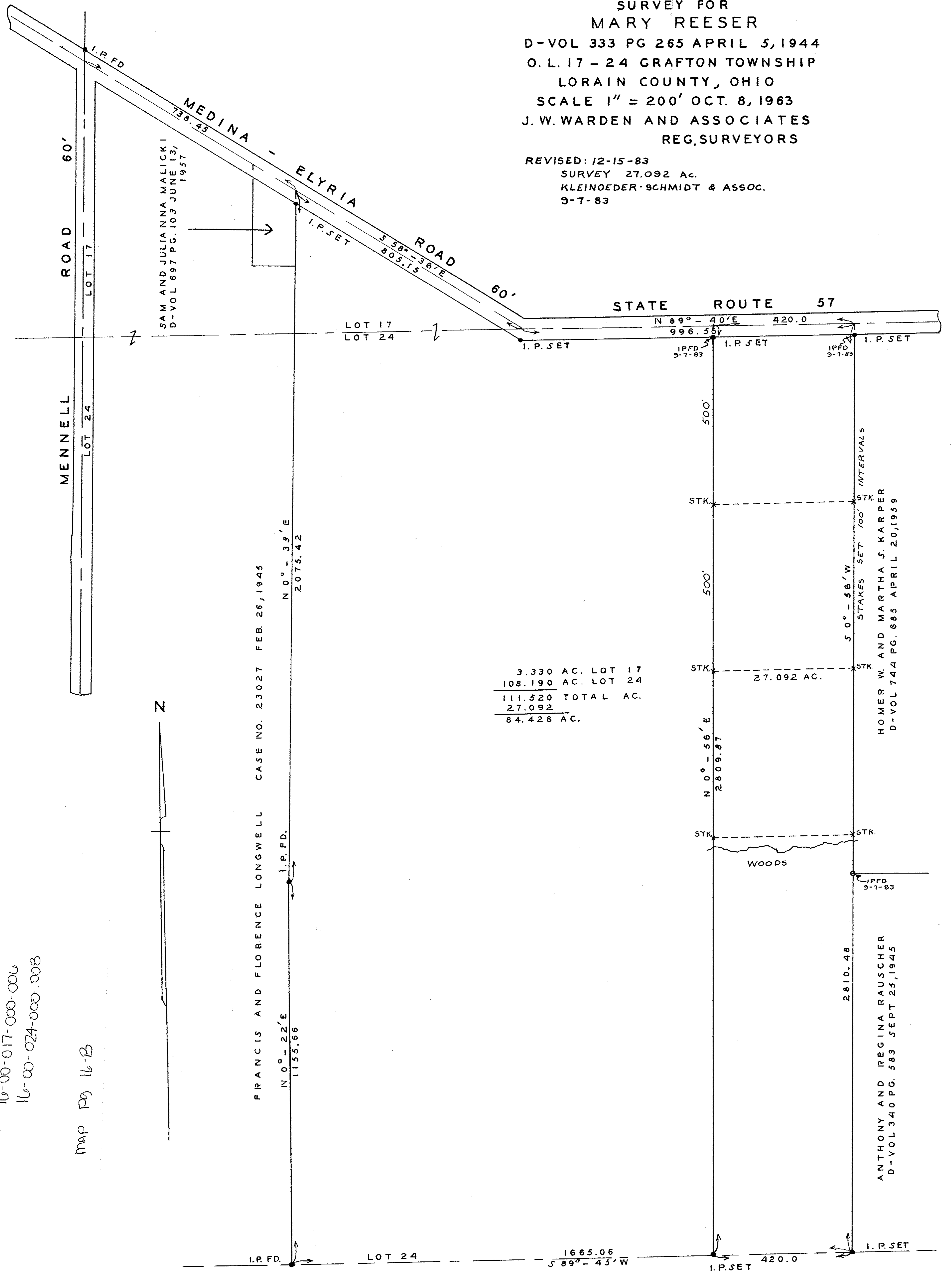


701414A

SURVEY FOR  
 MARY REESER  
 D-VOL 333 PG 265 APRIL 5, 1944  
 O. L. 17 - 24 GRAFTON TOWNSHIP  
 LORAIN COUNTY, OHIO  
 SCALE 1" = 200' OCT. 8, 1963  
 J. W. WARDEN AND ASSOCIATES  
 REG. SURVEYORS

REVISED: 12-15-83  
 SURVEY 27.092 AC.  
 KLEINOEDER-SCHMIDT & ASSOC.  
 9-7-83



3.330 AC.	LOT 17
108.190 AC.	LOT 24
111.520	TOTAL AC.
27.092	
84.428 AC.	

PPN  
 16-00-017-000-006  
 16-00-024-000-008  
 MAP PG 16-B