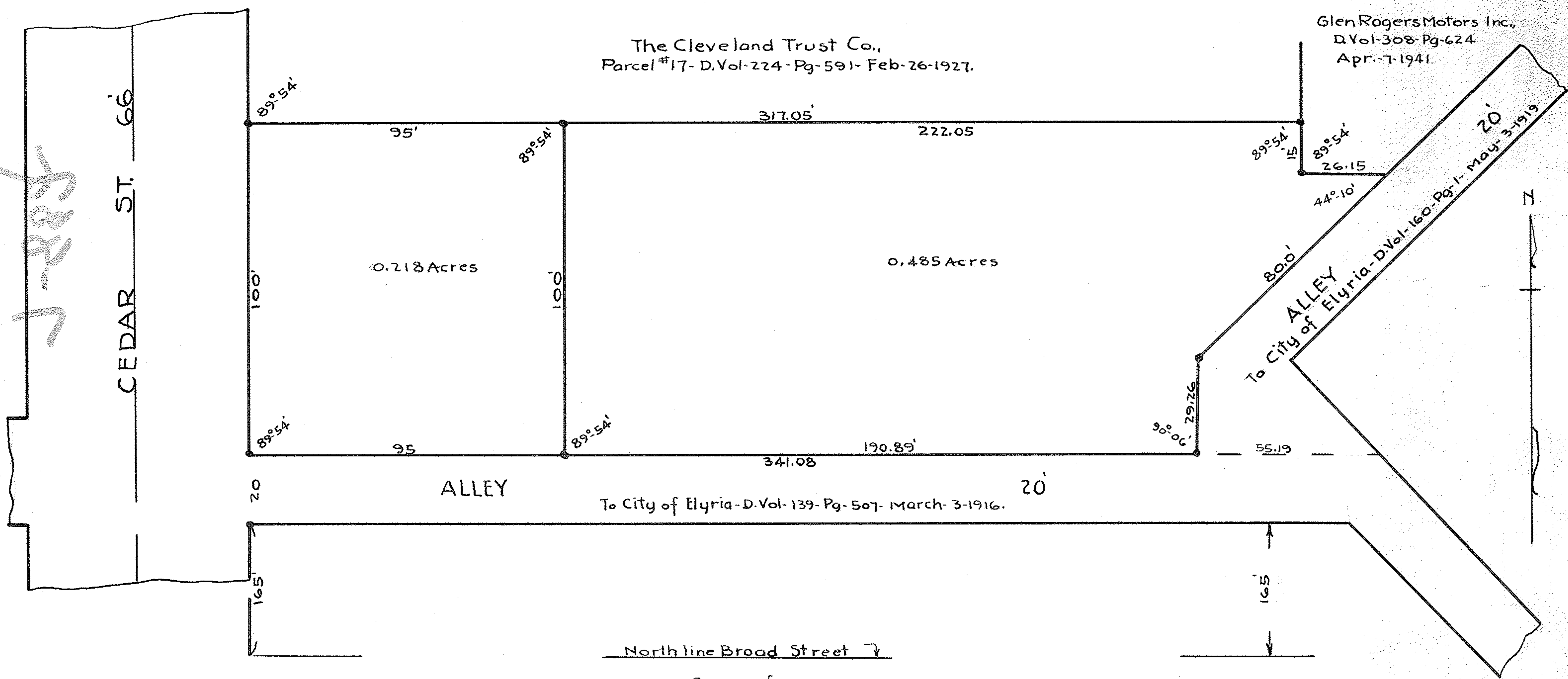


The Cleveland Trust Co.,  
Parcel #17- D.Vol-224-Pg-591- Feb-26-1927.

Glen Rogers Motors Inc.,  
D.Vol-308-Pg-624  
Apr.-7-1941.



To City of Elyria - D.Vol-139-Pg-507- March-3-1916.

To City of Elyria - D.Vol-160-Pg-1- May-3-1919

North line Broad Street

Survey for  
THE PARSCH REALTY CO.,  
Sub Lot 103- Block-85,  
Original Village Plat of Elyria-Map Vol-3-Pg-16.  
Elyria- Lorain Co., Ohio.

March-22-1944. Scale 1"= 30.  
*J. W. Warden*, Registered Surveyor.

Iron Pins set at all points marked thus ●

PPN 06-25-085-000-???

MAP Pg 6-121

War. Bk-10-Pg-34.