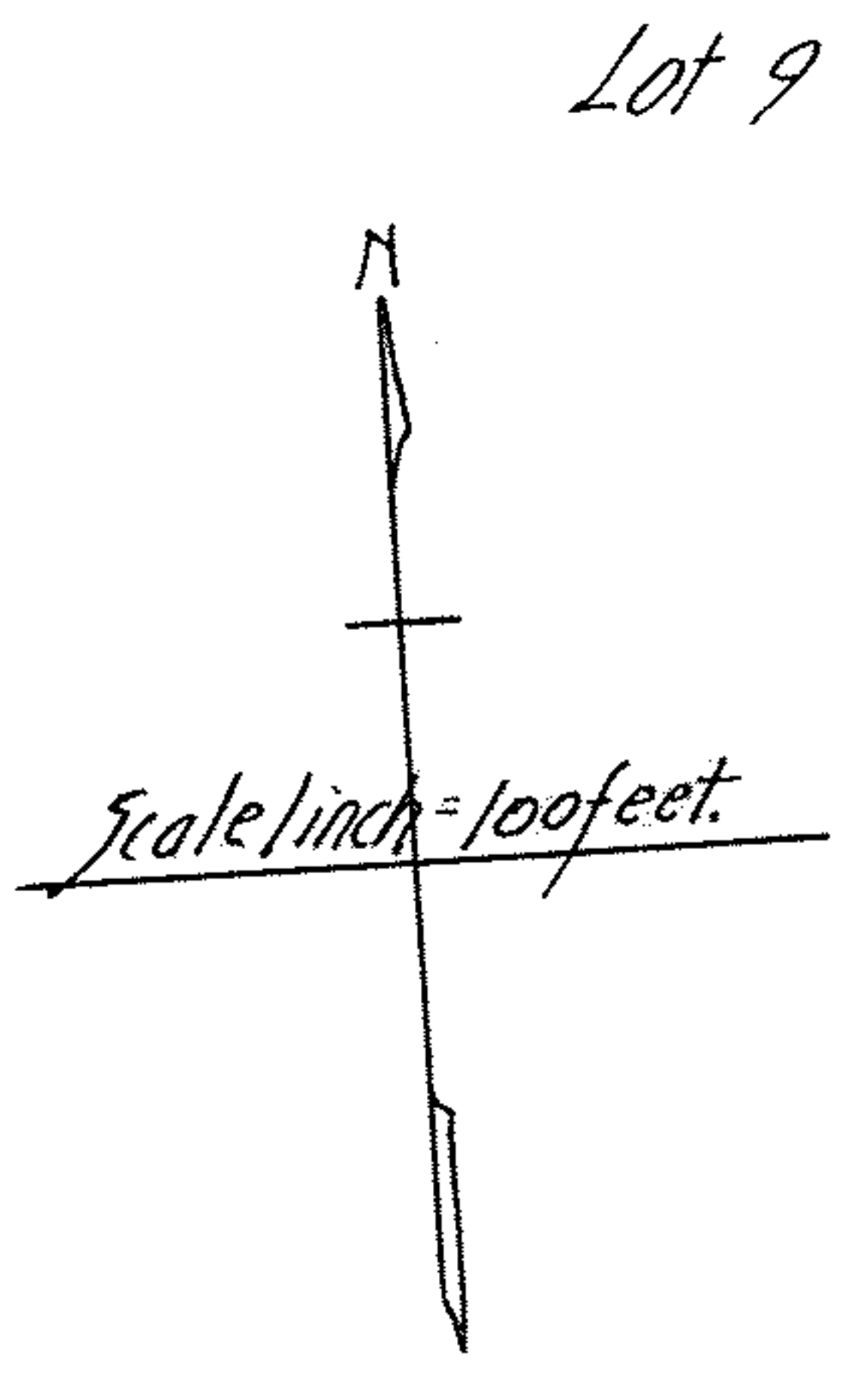
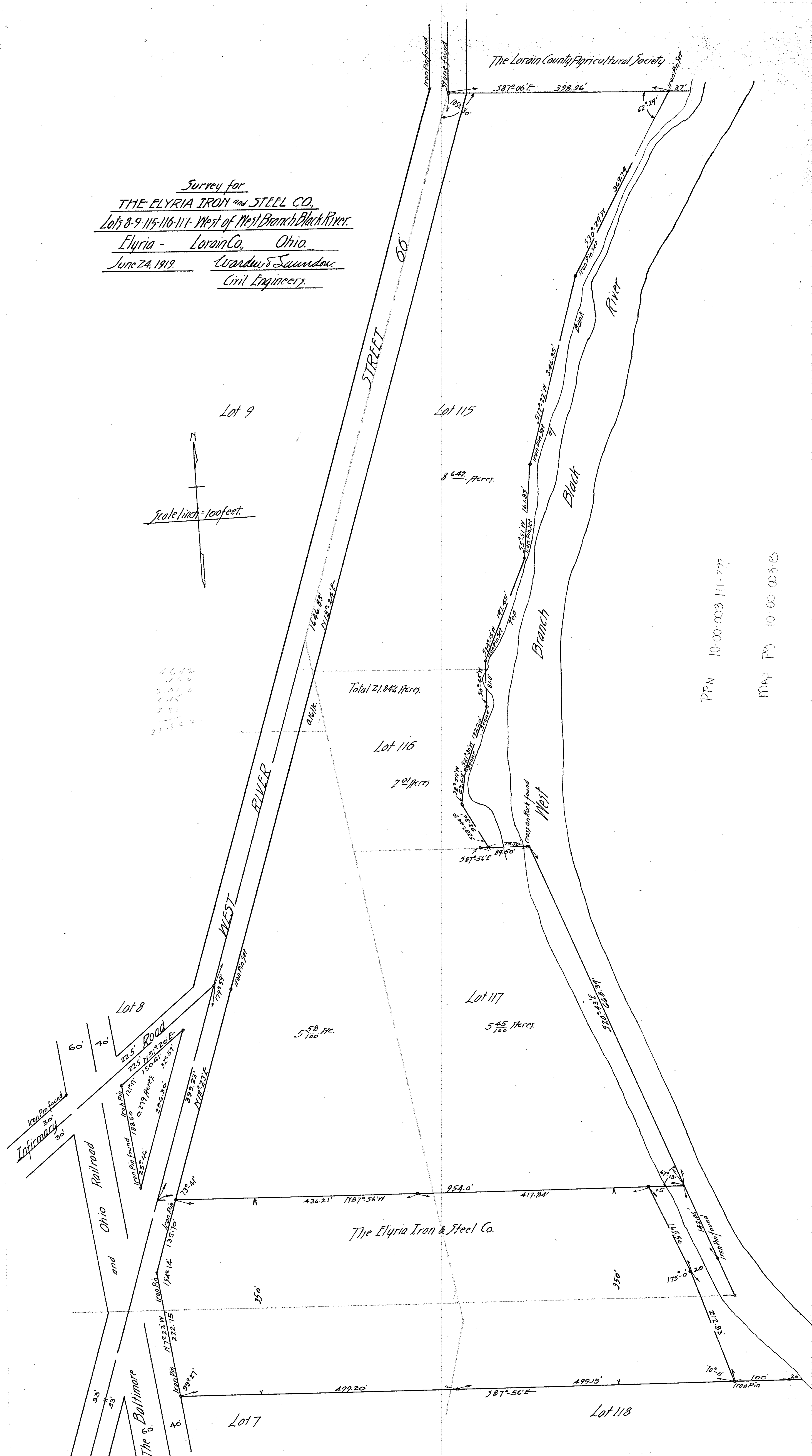


Survey for
THE ELYRIA IRON and STEEL CO.
 Lots 8-9-115-116-117- West of West Branch Black River.
 Elyria - Lorain Co., Ohio.
 June 24, 1919. Wardlaw & Saunders.
 Civil Engineers.



8.642
 1.160
 2.010
 5.155
 5.58
 21.842



PPN 10-00-003 111-777
 MAP PG 10-00-003 B