

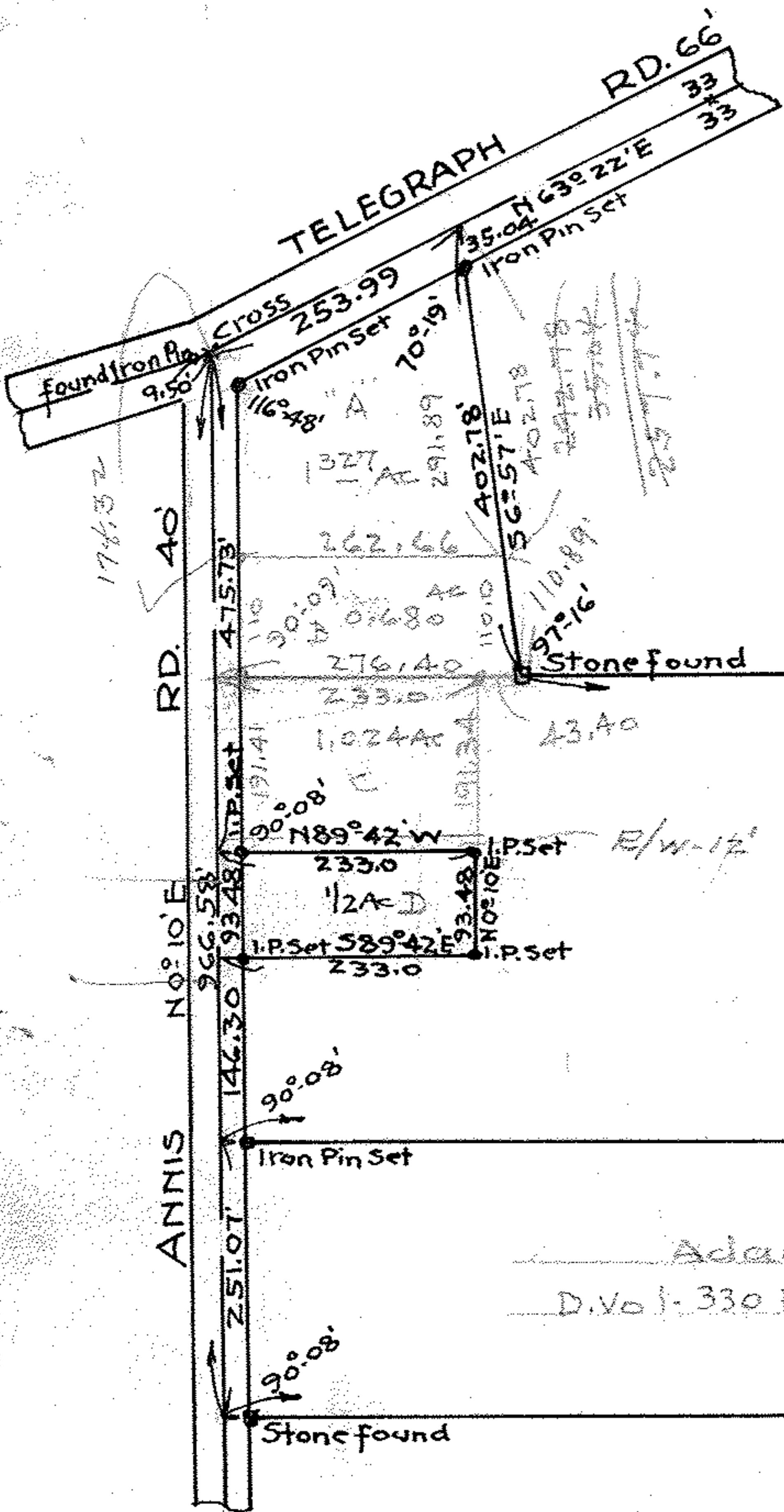
16-1039-1

Freda M. Steele

Survey for
Wm M. Annis.
Lot 30, Amherst Twp.
Lorain Co., O.
June 26, 1937. Scale 1" = 200ft.
J.W. Warden, Registered Surveyor.
Adelbert B. Annis, Will Rec. Vol. 41-Pg. 237.

PPN 05-00-030-000 ???

MAP Pg 05-00-030-A



Harvey A. Rogers
D. Vol. 216-607 - Mar. 29, 1926.

589°41' E
2149.17'

Wm M. Annis
24.9774 Acres (exclusive of Ry.)
0.50 Acres (retained)
24.4774 Acres

D. Vol. 336 Pg. 560 - Sept. 1, 1944 = 21.4464 Ac

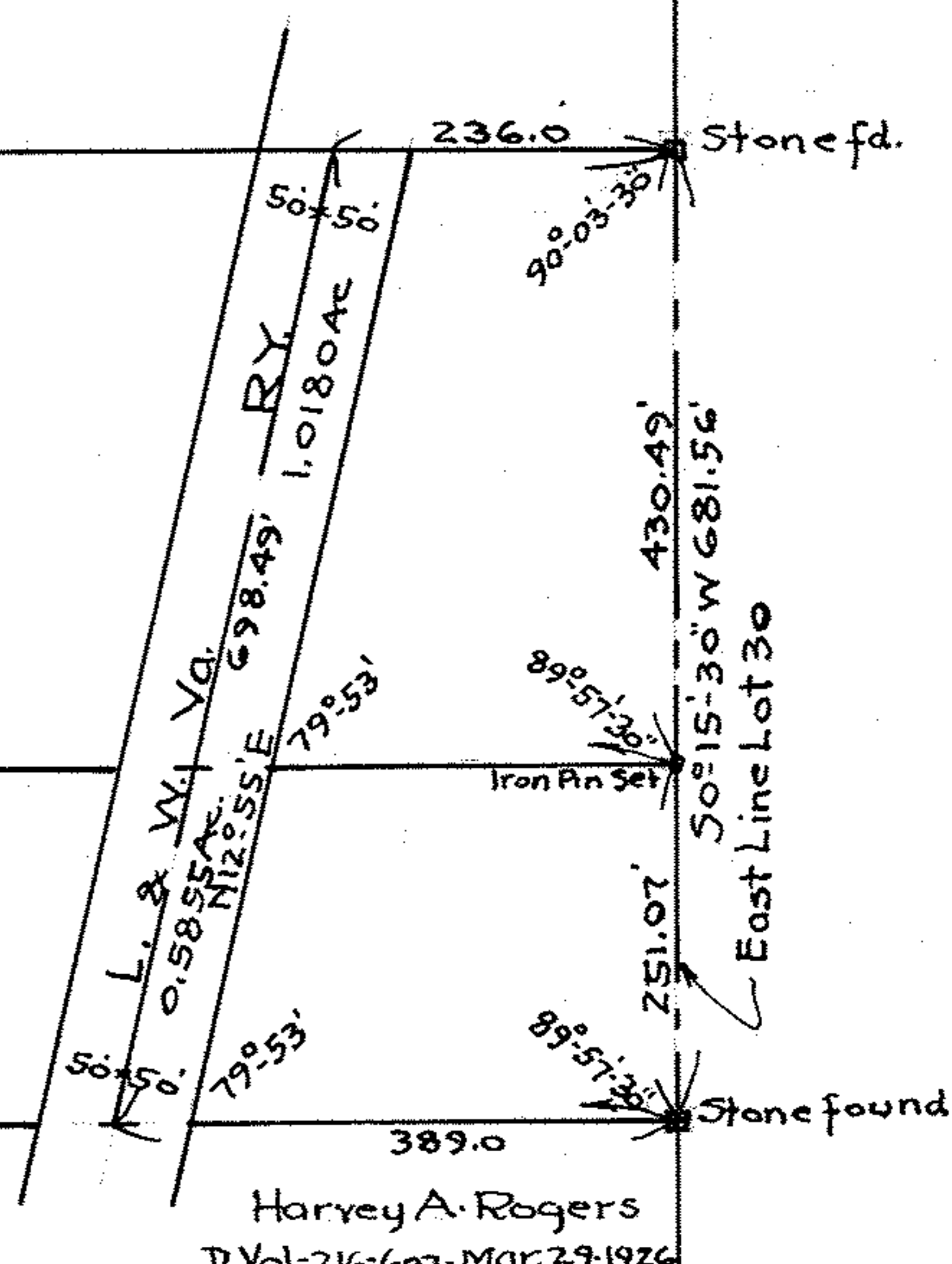
2425.04'
N89°42' W

Adam Szefcyk
D. Vol. 330 Pg. 243 Aug. 16, 1943

Chester H. Annis
13.3904 Acres (exclusive of Ry.)

589°42' E
2424.64'

Harvey L. Bassett
D. Vol. 266 - Pg. 18 - Oct. 18, 1932.



Harvey A. Rogers
D. Vol. 216-607 - Mar. 29, 1926