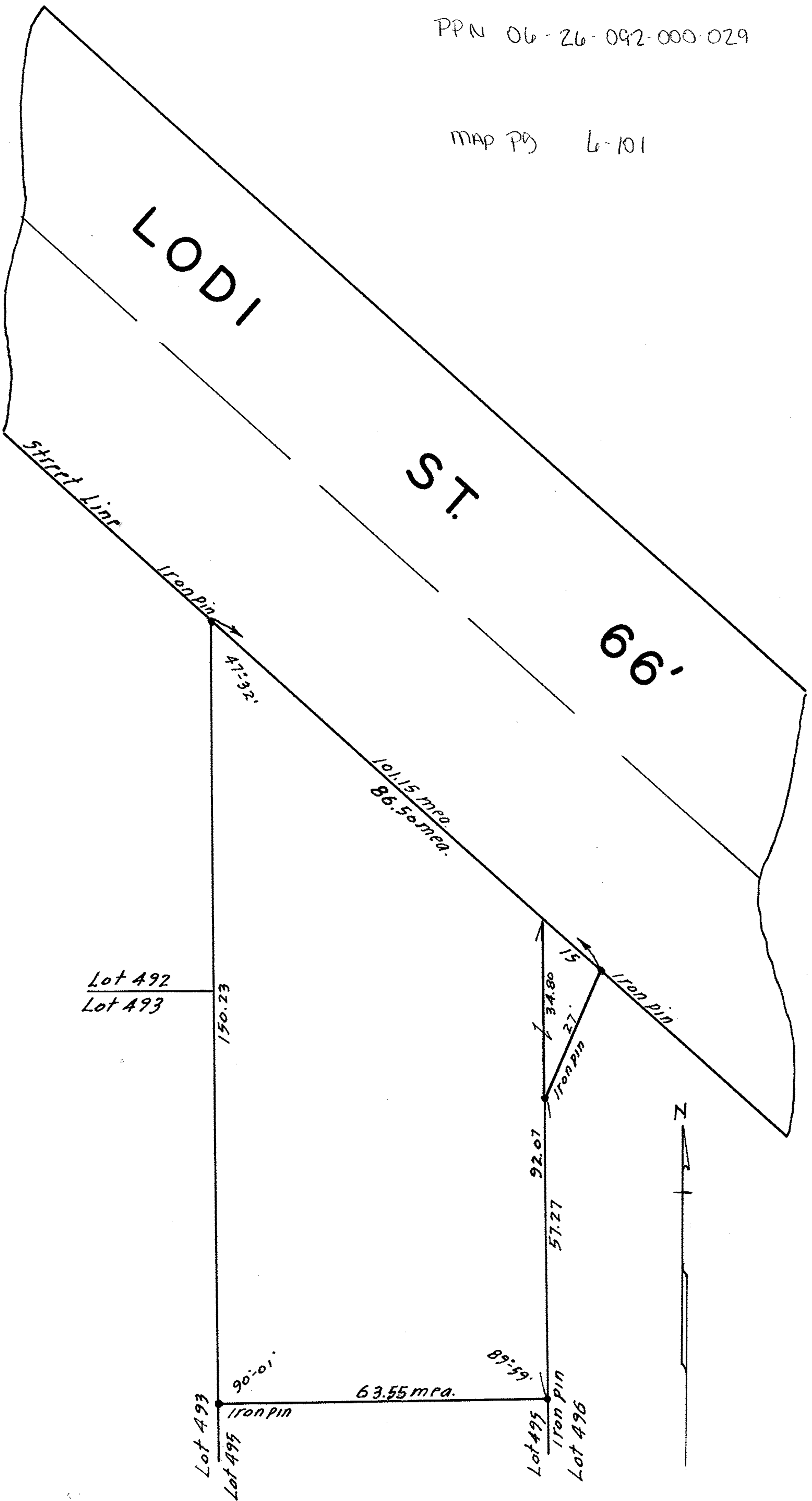


PPN 06-26-092-000-029

MAP PG 6-101



SURVEY FOR  
**GEORGE W. BARRES**  
 D-VOL. 381 PG. 494 MARCH 1, 1946  
 BLOCK 93 PART OF LOTS 495-496  
 CHARLES ELY ADDN. MAP VOL. 1 PG. 21  
 ELYRIA CITY, LORAIN COUNTY, OHIO  
 SCALE 1" = 20' NOV. 4, 1953

D. D. Andrus REG. SURVEYOR

201186

5-1180