

MAP OF SURVEY MADE FOR
The Sinclair Refining Co.,

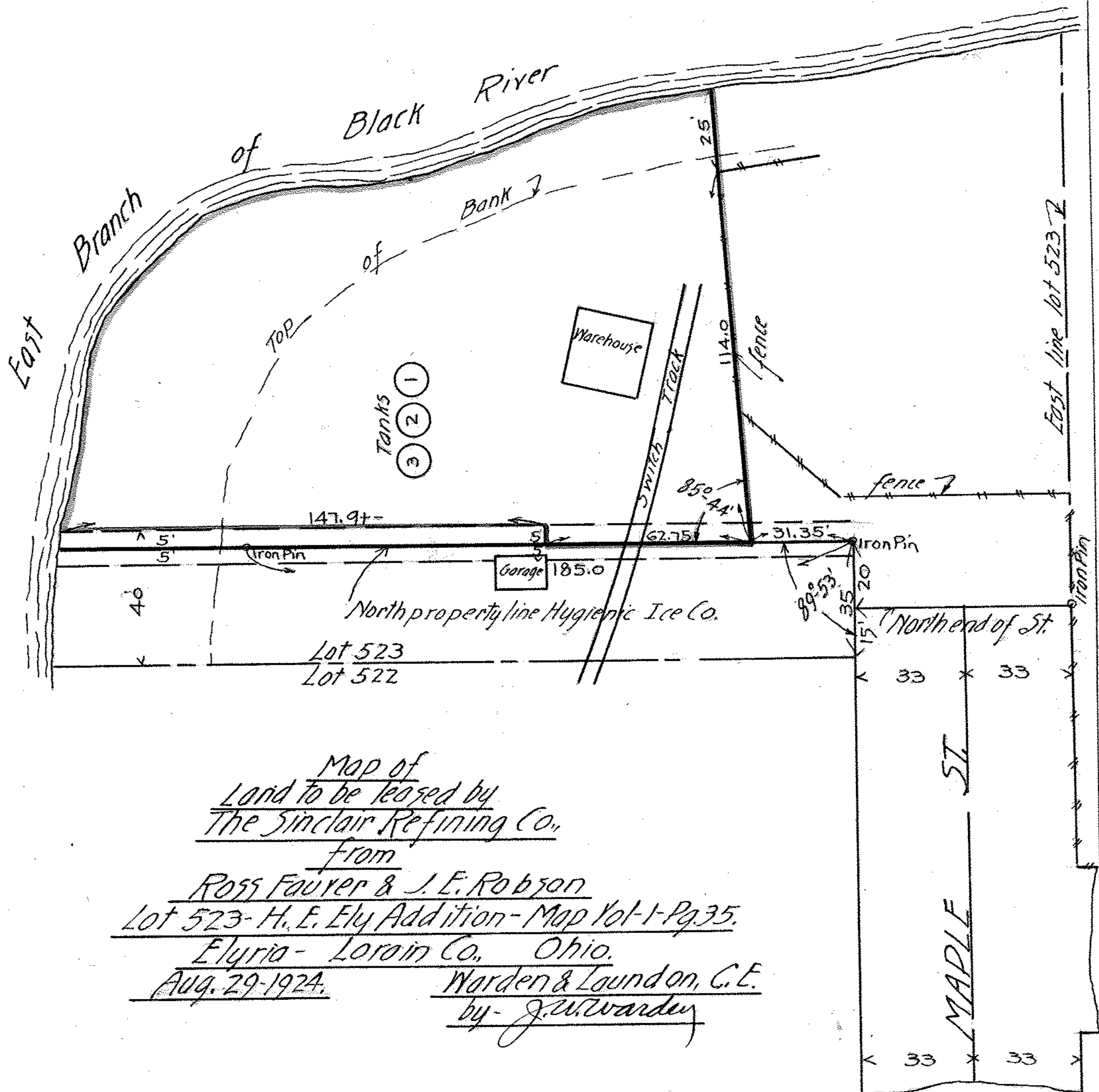
200190 C

Elyria, Ohio.
 Lorain County, Ohio

Distances are given in feet and decimal parts

Scale, 1 in. = 40 Feet
 Elyria, O.,
 Order No.,
 F. B. 17, Pg. 11.

Warden & Laundon, C. E.
 403 ELYRIA BLOCK



Map of
Land to be leased by
The Sinclair Refining Co.,
from
Ross Faurey & J. E. Robson
Lot 523 - H. E. Ely Addition - Map Vol-1-Pg 35.
Elyria - Lorain Co., Ohio.
Aug. 29-1924. Warden & Laundon, C. E.
by - J. W. Warden