

MAP OF SURVEY MADE FOR  
 RALPH and JOHN HAMBLY  
 Lot 5, Newberry Tract,  
 Elyria, Twp.,

Lorain County, Ohio

Distances are given in feet and decimal parts

Scale, 1 in. = 40 Feet

Elyria, O.,

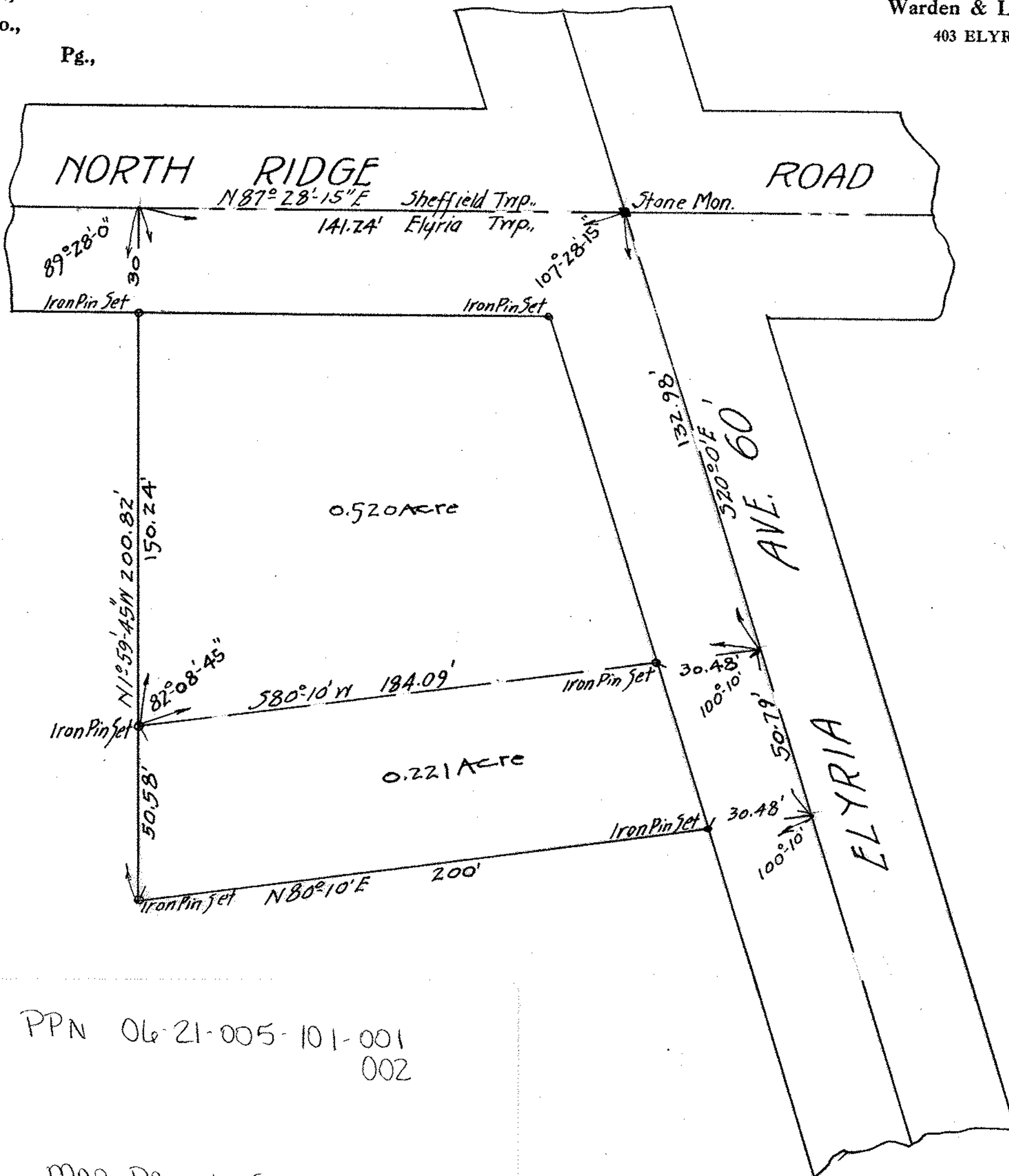
Order No.,

F. B.

Pg.,

Warden & Laundon, C. E.

403 ELYRIA BLOCK



200801 A

PPN 06-21-005-101-001  
 002

Map pg 6-5