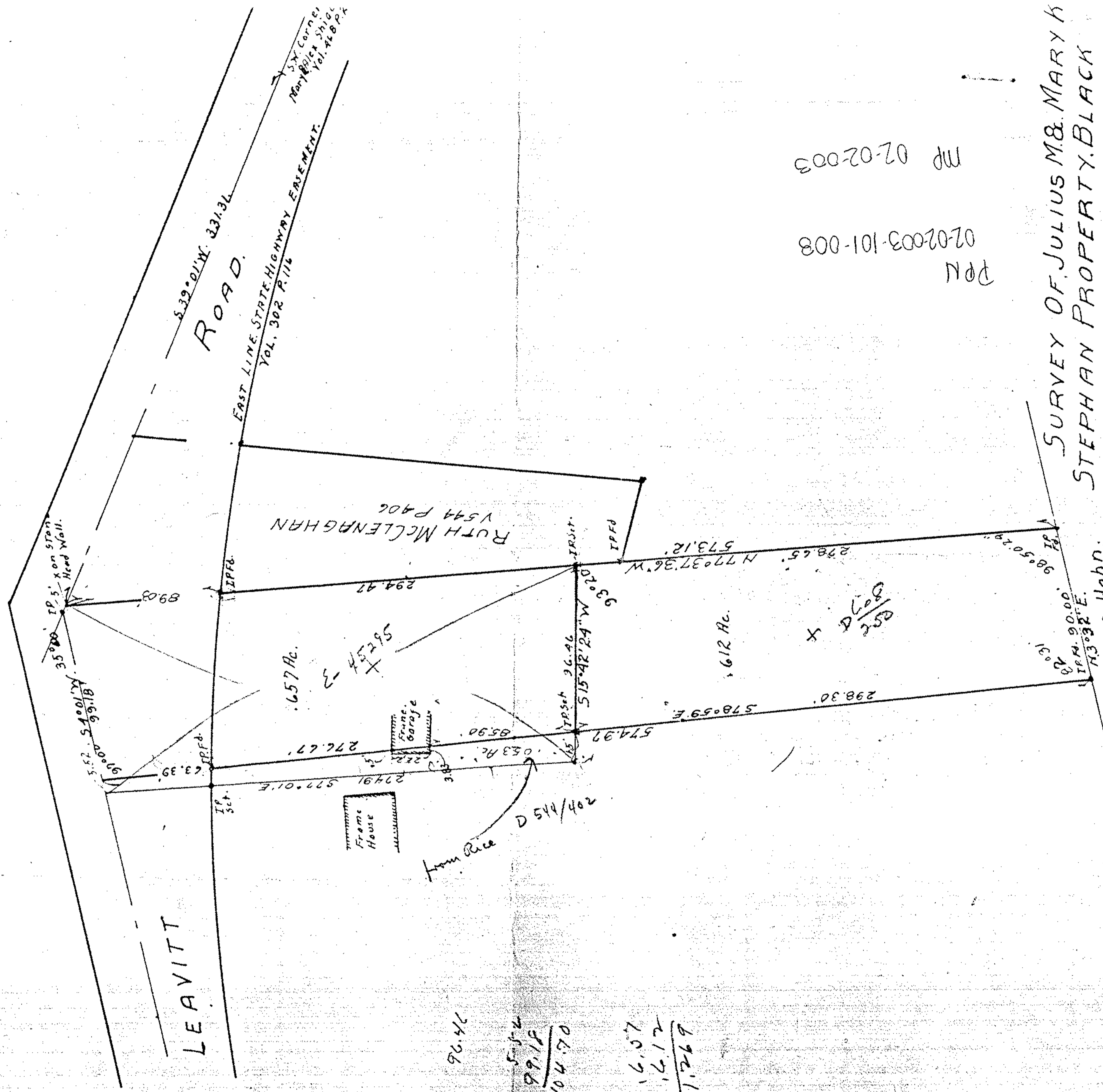
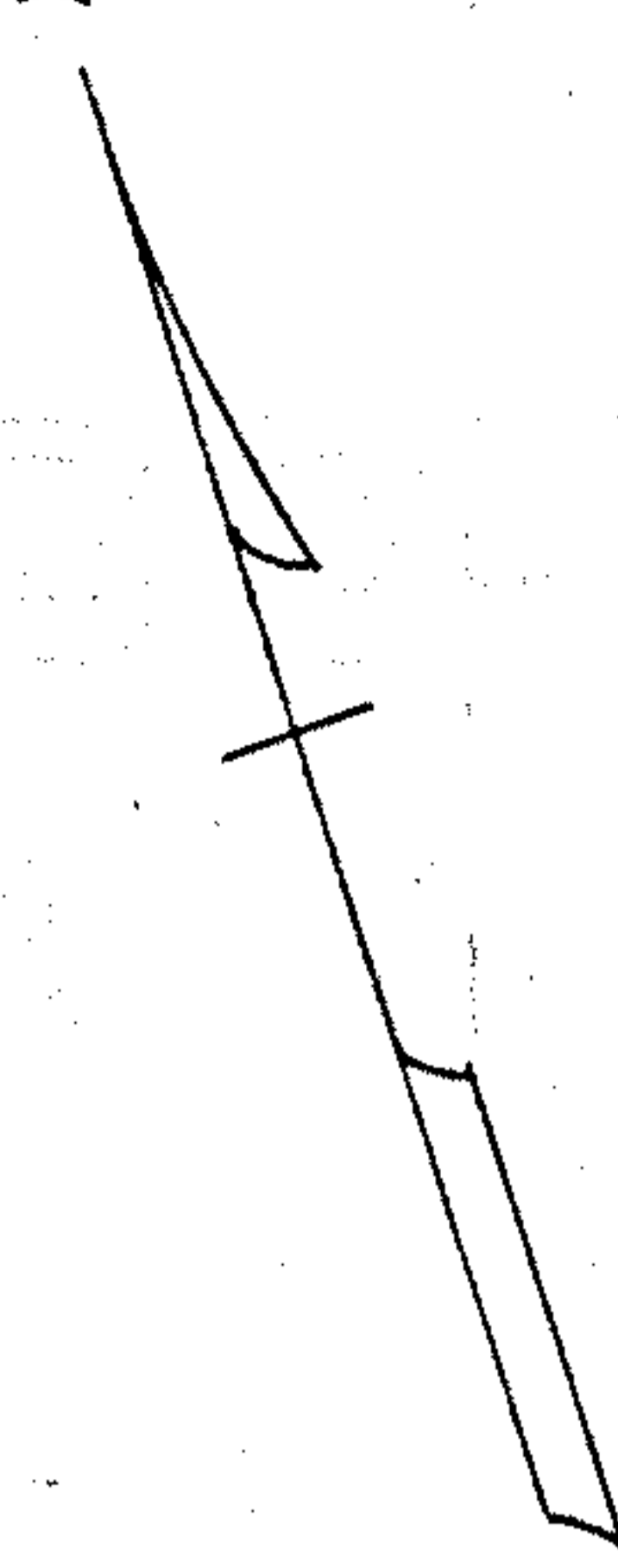


Horick



From Rice D 544/402

96.42  
5.52  
99.18  
104.70  
16.07  
16.12  
1.269

800-101-0002070  
800-702-003

SURVEY OF JULIUS M. & MARY K  
STEPHAN PROPERTY. BLACK  
RIVER TOWNSHIP OL. 3. TR. 2.  
LORAIN COUNTY, OHIO.  
SCALE 1"=60' AUG. 21 1954  
BY RAY E. HOLLIS, CIVIL ENGINEER.

Chas. A. Hohn.

2-02-003