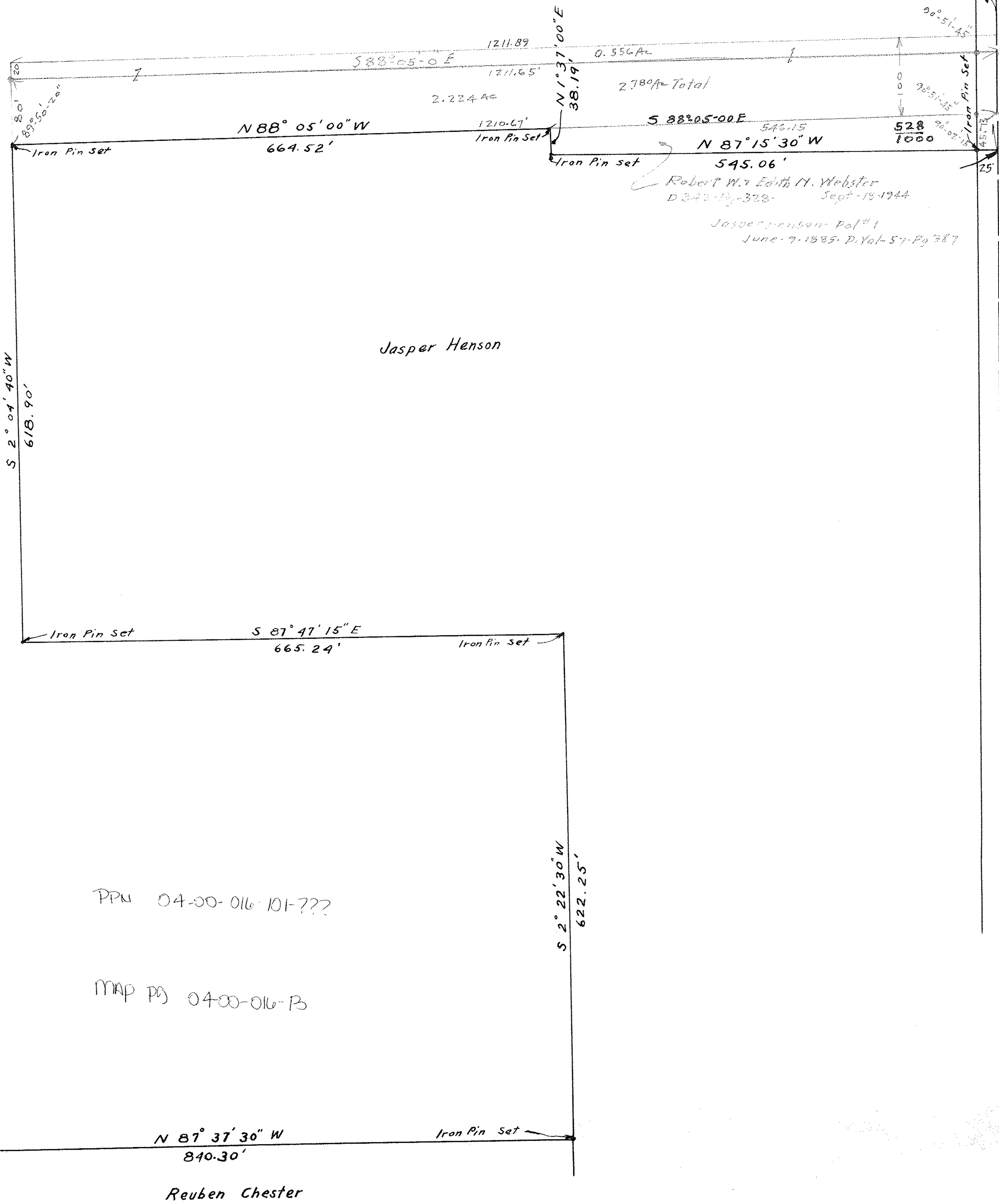


Mathias & George Tomlin

S 87° 47' 00" E
2331.16'

Edward Doller
1925

63.939 Acres Total
0.528
63.411 Acres
2.224 "
61.187 " remaining
0.556
60.631



Robert W. Faith M. Webster
D 342-13-323- Sept-14-1944
Jasper Henson- Ref #1
June-7-1985. D. Vol-57-Pg 387

Elizabeth Linden

300474

SURVEY FOR
Edward Doller
Section 16 Avon Village
Lorain Co. Ohio

April 3, 1925 Scale 1" = 100ft.

Worden & Laundon

Civil Engineers
Elyria, Ohio.

Revised Nov 27 1945 J.W. Worden

590.65
S. Line N.Y.C. & St. L.
R.R.

Iron Pin Set

N E 20 00 2
1272.22'

Section Line

Iron Pin Set

Iron Pin Set

Iron Pin Set

Iron Pin Set

Iron Pin set

Iron Pin Set

Iron Pin Set

Iron Pin Set

Iron Pin Set

Iron Pin Set