

MAP OF SURVEY MADE FOR

Elizabeth C. Baker

Original Lot 17 Brace Tr.

Elyria Township

Lorain County, Ohio

Distances are given in feet and decimal parts

Scale, 1 in. = 100 Feet

Elyria, O.,

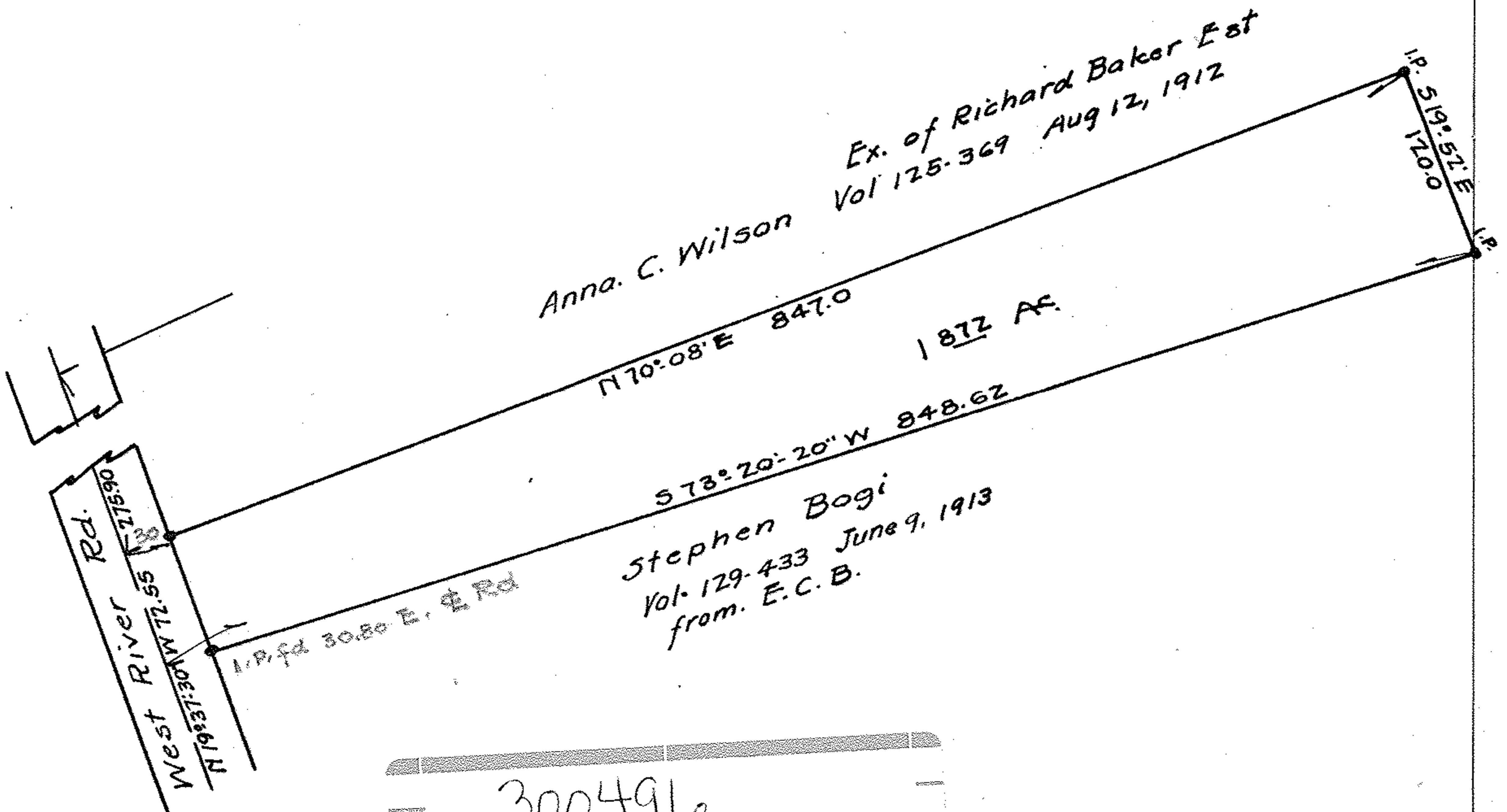
Order No.,

F. B. Pg.,

Warden & Laundon, C. E.

403 ELYRIA BLOCK

7-16-26



300496

MAP Pg 6-29

JAN-E