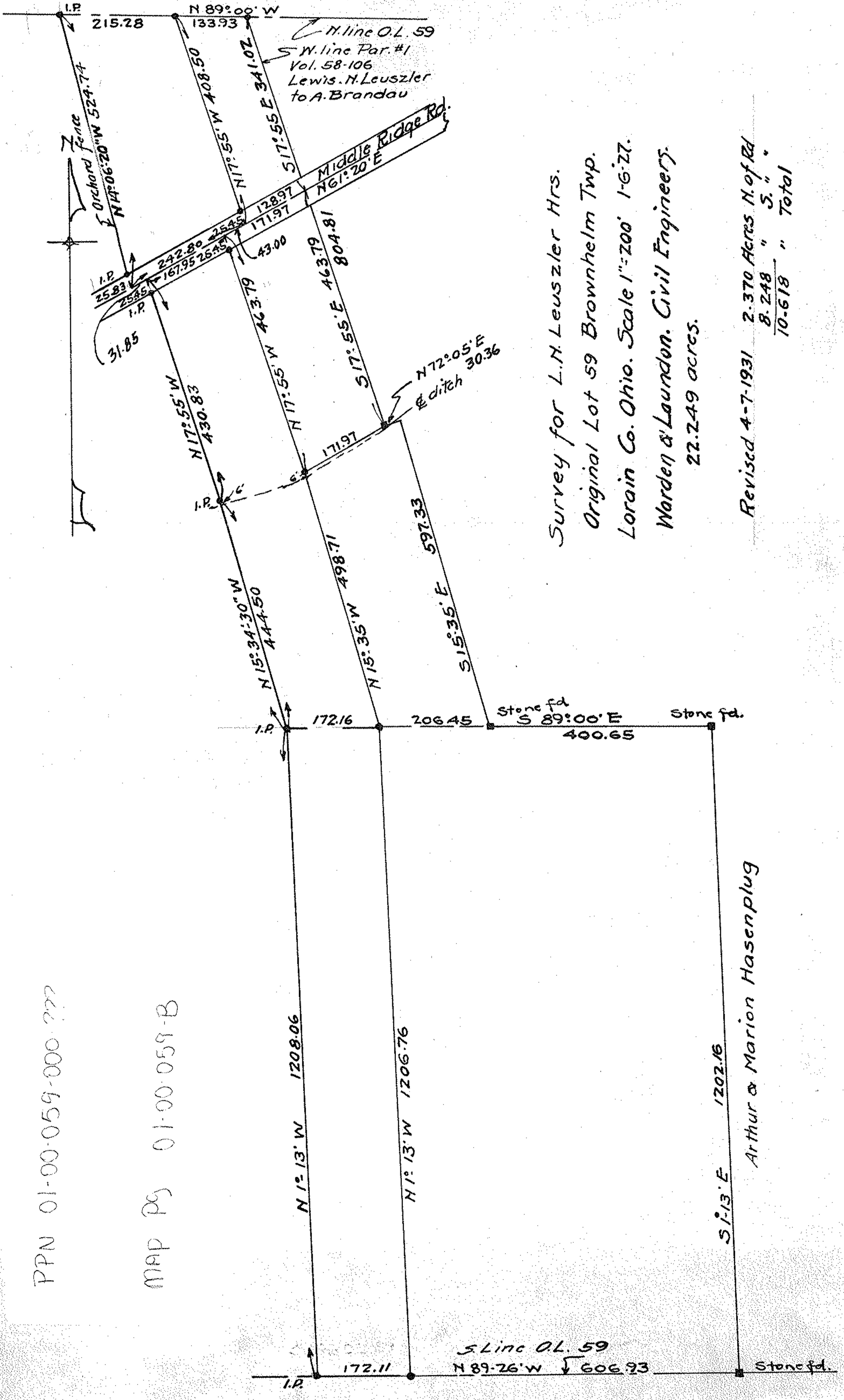


961510

PPN 01-00-059-000-777

MAP PG 01-00-059-B

012-10



Survey for L.N. Leuszler Hrs.  
 Original Lot 59 Brownhelm Twp.  
 Lorain Co. Ohio. Scale 1"=200' 1-6-27.  
 Warden & Laundon. Civil Engineers.  
 22.249 acres.

Revised 4-7-1931 2.370 Acres N. of Rd.  
 8.248 " " 5. " "  
 10.618 " " Total

I.P. 172.11 N 89° 26' W 606.93 Stone fd.  
 S Line O.L. 59

N 1° 13' W 1208.06  
 N 1° 13' W 1206.76  
 S 1° 13' E 1202.16  
 Stone fd. Arthur & Marion Hasenplug

I.P. 172.16 206.45 Stone fd. S 89° 00' E 400.65 Stone fd.

N 15° 34' 30" W 444.50  
 N 15° 35' W 498.71  
 S 15° 35' E 597.33

N 17° 55' W 430.83  
 N 17° 55' W 463.79  
 N 72° 05' E Editch 30.36

N 17° 55' W 408.50  
 N 17° 55' E 341.02  
 N. line O.L. 59  
 S. W. line Par. #1  
 Vol. 58-106  
 Lewis. N. Leuszler  
 to A. Brandau

I.P. 215.28 N 89° 00' W 133.93

Orchard Fence  
 N 14° 06' 20" W 524.74

I.P. 25.83  
 I.P. 25.85  
 31.85  
 242.80  
 167.95  
 25.45

N 17° 55' W 430.83

N 15° 34' 30" W 444.50

I.P. 172.16

N 1° 13' W 1208.06

N 1° 13' W 1206.76

S 1° 13' E 1202.16

Stone fd. Arthur & Marion Hasenplug

I.P. 172.11

N 89° 26' W 606.93