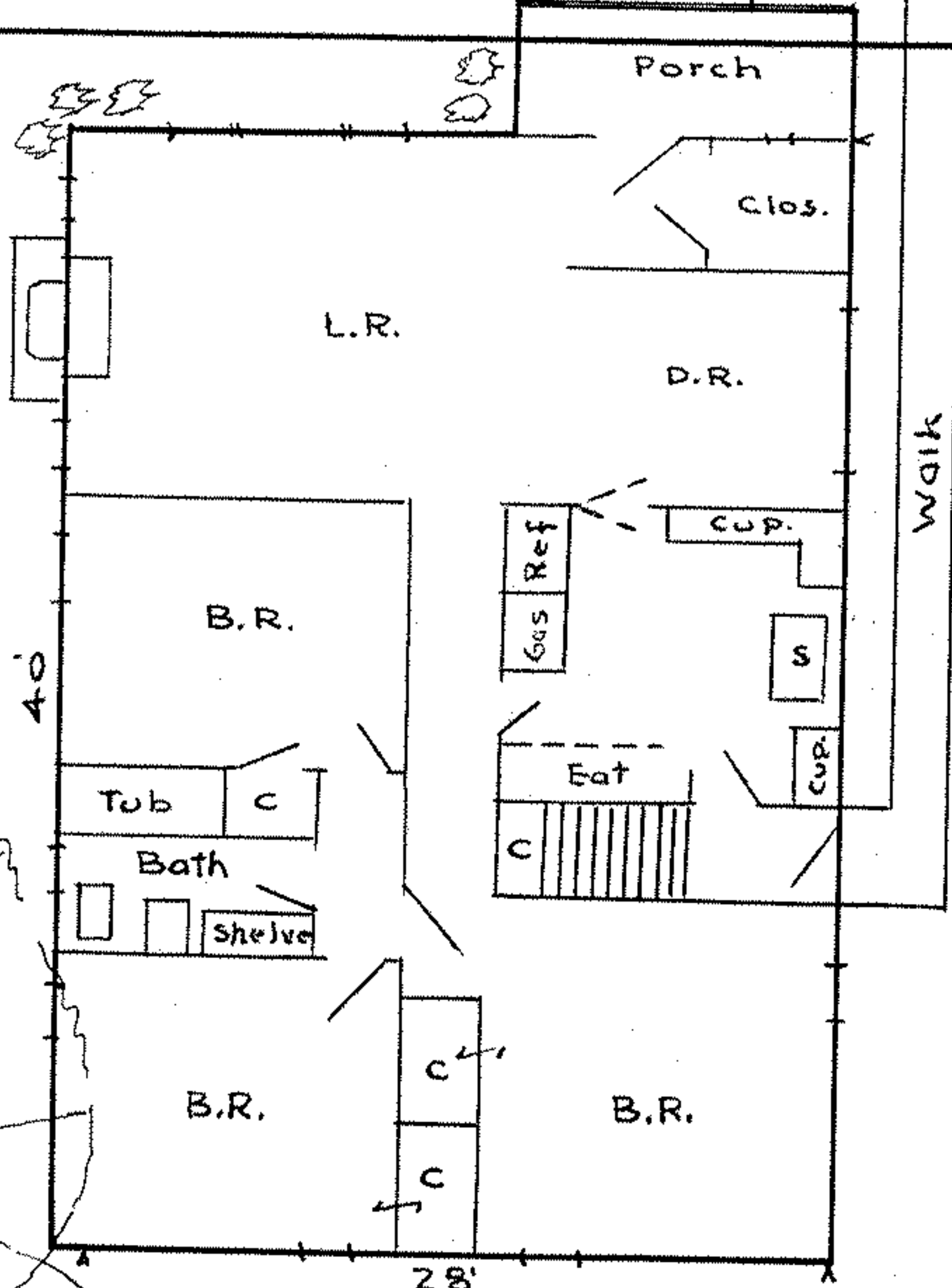
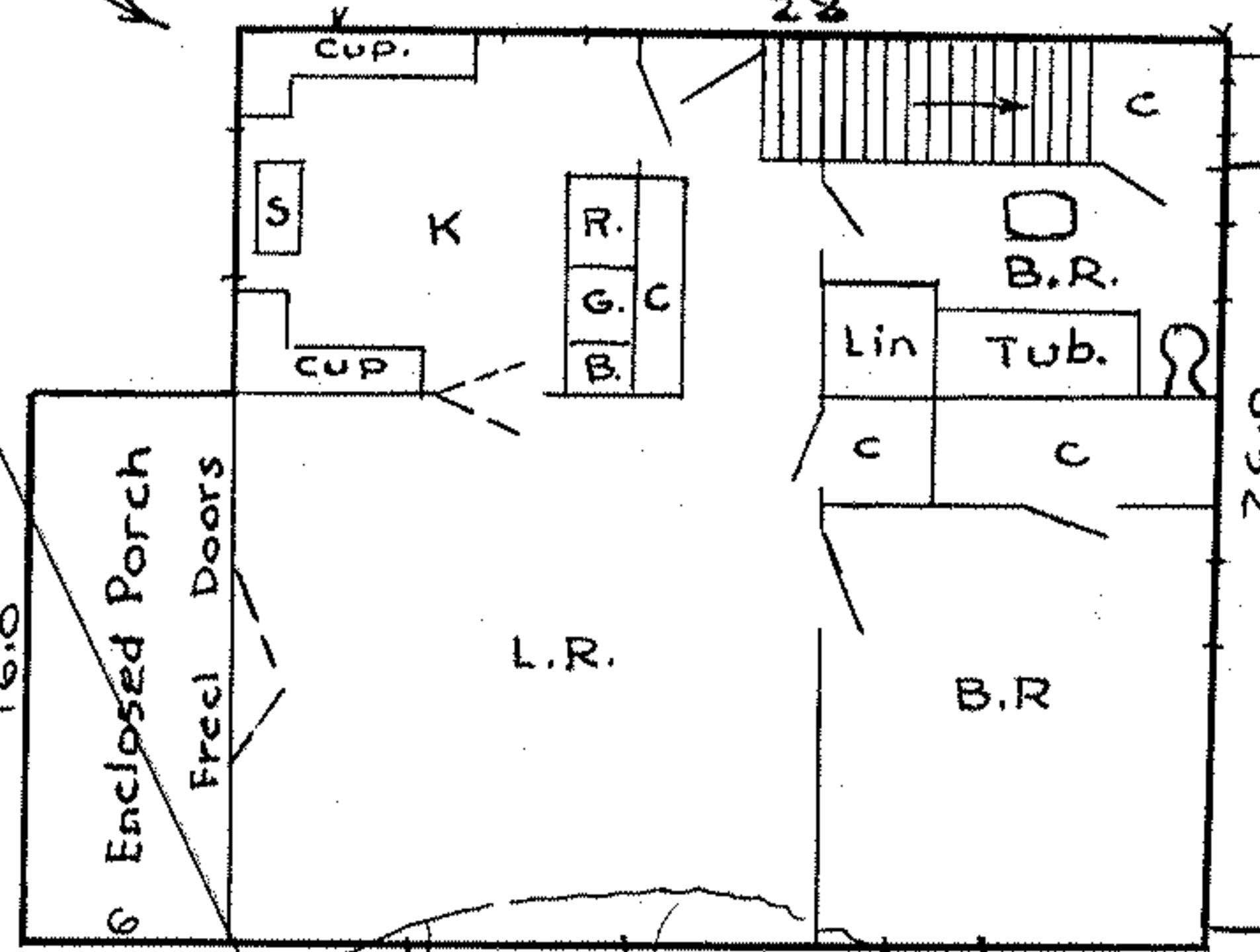
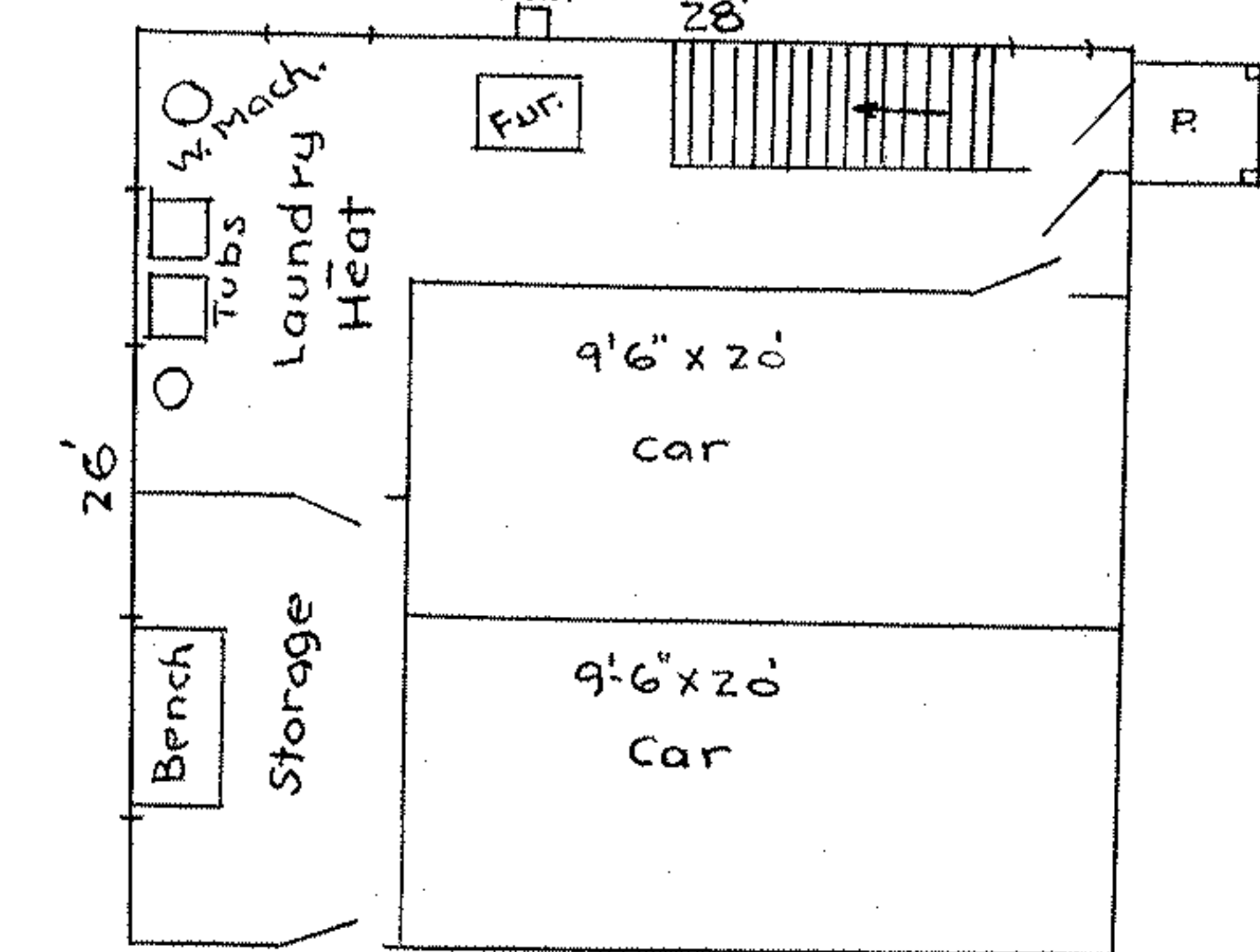


Ground Floor Plan-2-Car Garage



BLACK RIVER

EAST BRANCH

MAP PG W-120

PPN 06-25-095 000-002 003

200760 B

Survey & Plot Plan for  
 J. W. WARDEN SR.  
 O.L. 95-96- East of East Branch-Black River,  
 Elyria - Lorain Co., Ohio.  
 Scale 1"=10'. January-12-1949.  
 J.W. Warden-Registered Surveyor,  
 Revised Oct. 4, 1951

Lot 95  
Lot 94