

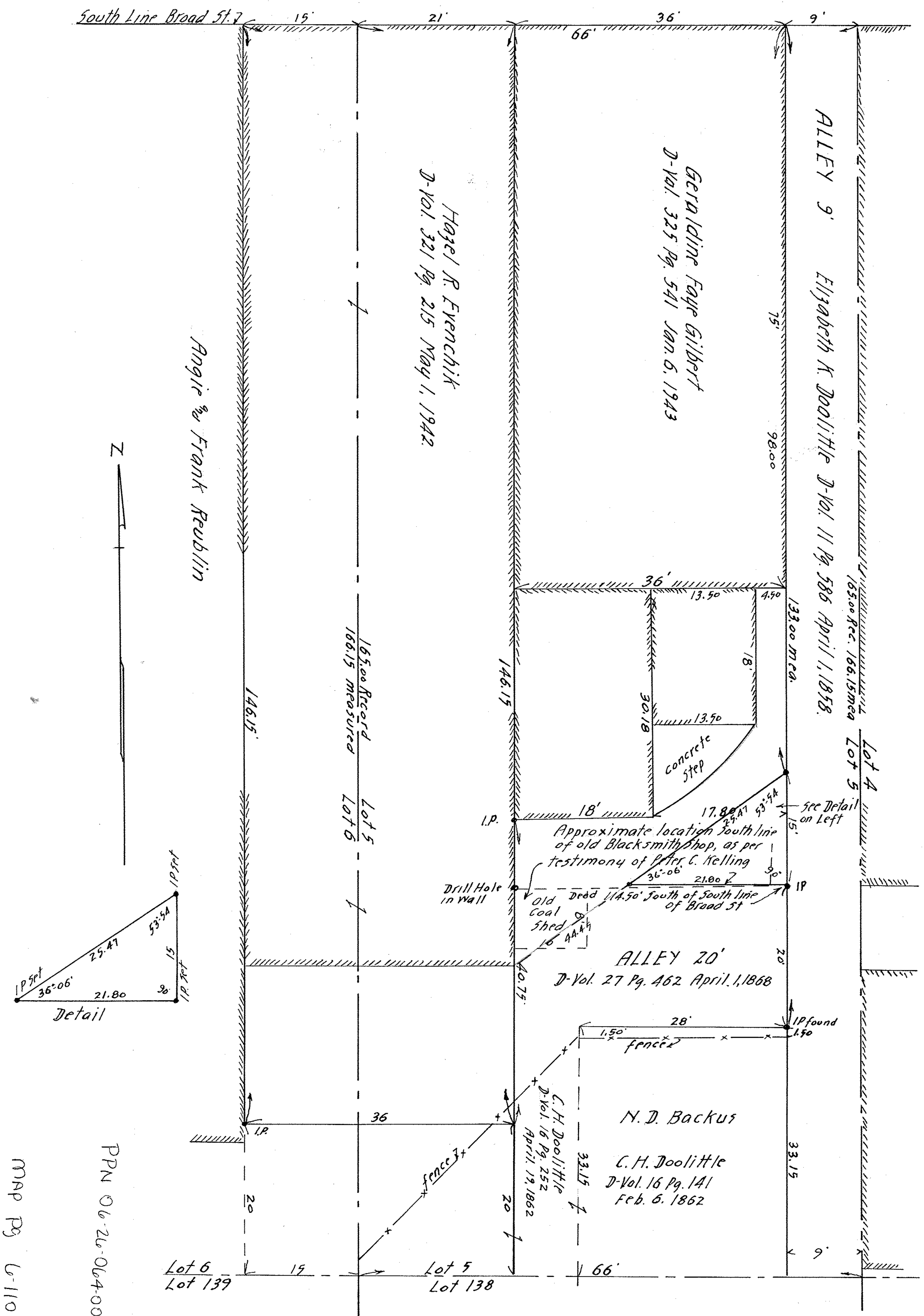
MAP SHOWING PREMISES OF GERALDINE FAYE GILBERT AND HAZEL R. EVENCHIK AND--ALLEY

BLOCK 64 LOTS 5-6 BETWEEN BRANCHES
OF BLACK RIVER
ORIGINAL VILLAGE PLAT OF ELYRIA
MAP VOL. 3 PG. 14
ELYRIA CITY, LORAIN COUNTY, OHIO
SCALE 1" = 10' NOV. 2, 1954
J. W. WARDEN AND ASSOCIATES REG. SURVEYORS

Revised Nov. 15, 1954 J.W.G.

BY J. D. Andrus

BROAD STREET 99'



PPN 06-26-064-000-050
-051
MAP PG. U-110

200840 B