

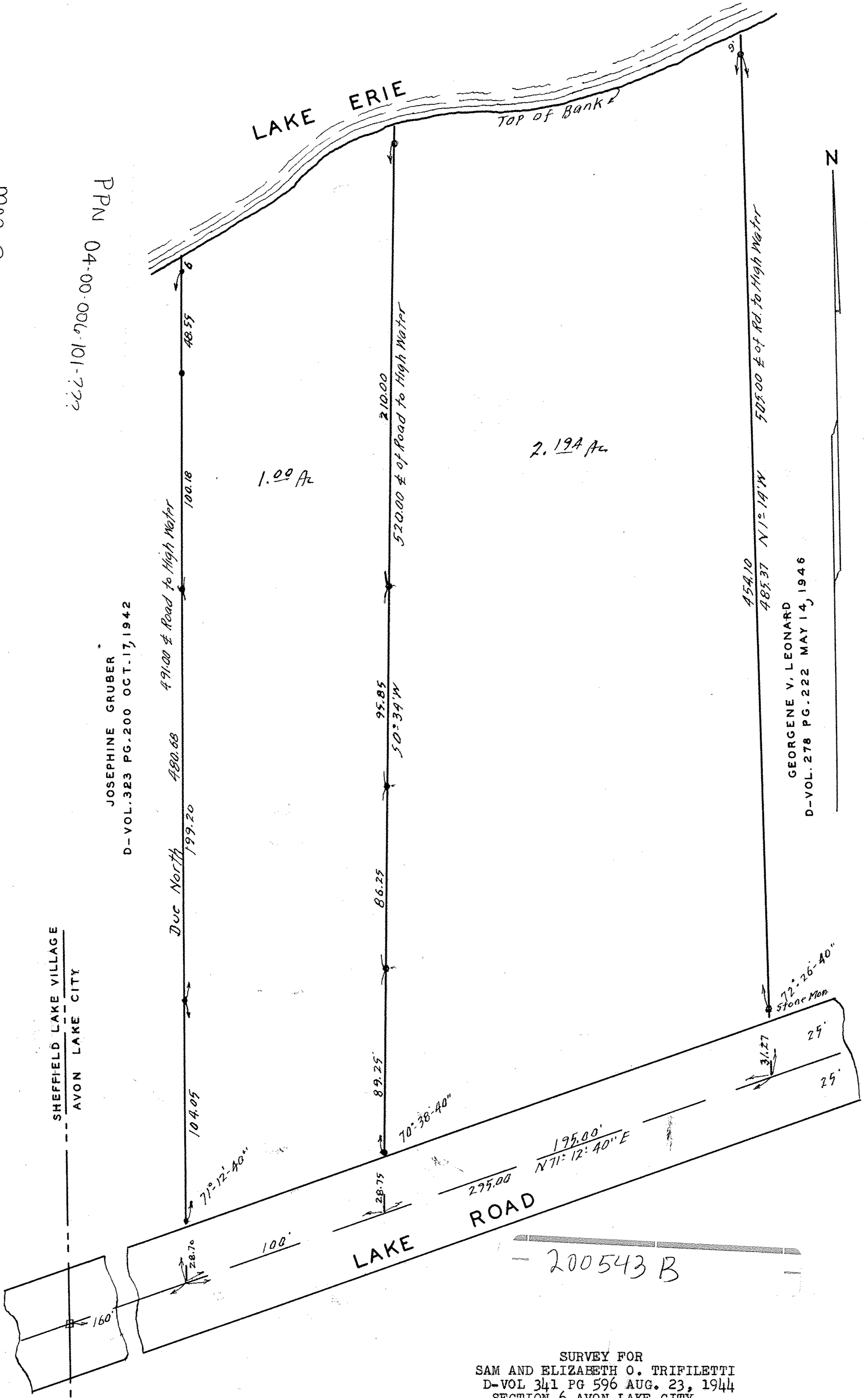
MAP P9 4-00-006-B

PPN 04-00-006-101-7??

JOSEPHINE GRUBER
D-VOL. 323 PG. 200 OCT. 17, 1942

GEORGENE V. LEONARD
D-VOL. 278 PG. 222 MAY 14, 1946

SHEFFIELD LAKE VILLAGE
AVON LAKE CITY



SURVEY FOR
 SAM AND ELIZABETH O. TRIFILETTI
 D-VOL 341 PG 596 AUG. 23, 1944
 SECTION 6 AVON LAKE CITY
 LORAIN COUNTY, OHIO
 SCALE 1" = 40' MAY 6, 1964
 J. W. WARDEN AND ASSOCIATES
 REG. SURVEYORS

Iron stakes at all points indicated thus •