

SURVEY FOR MISS SCHMITTGEN IN LOT 71  
WEST OF BLACK RIVER ELYRIA OHIO

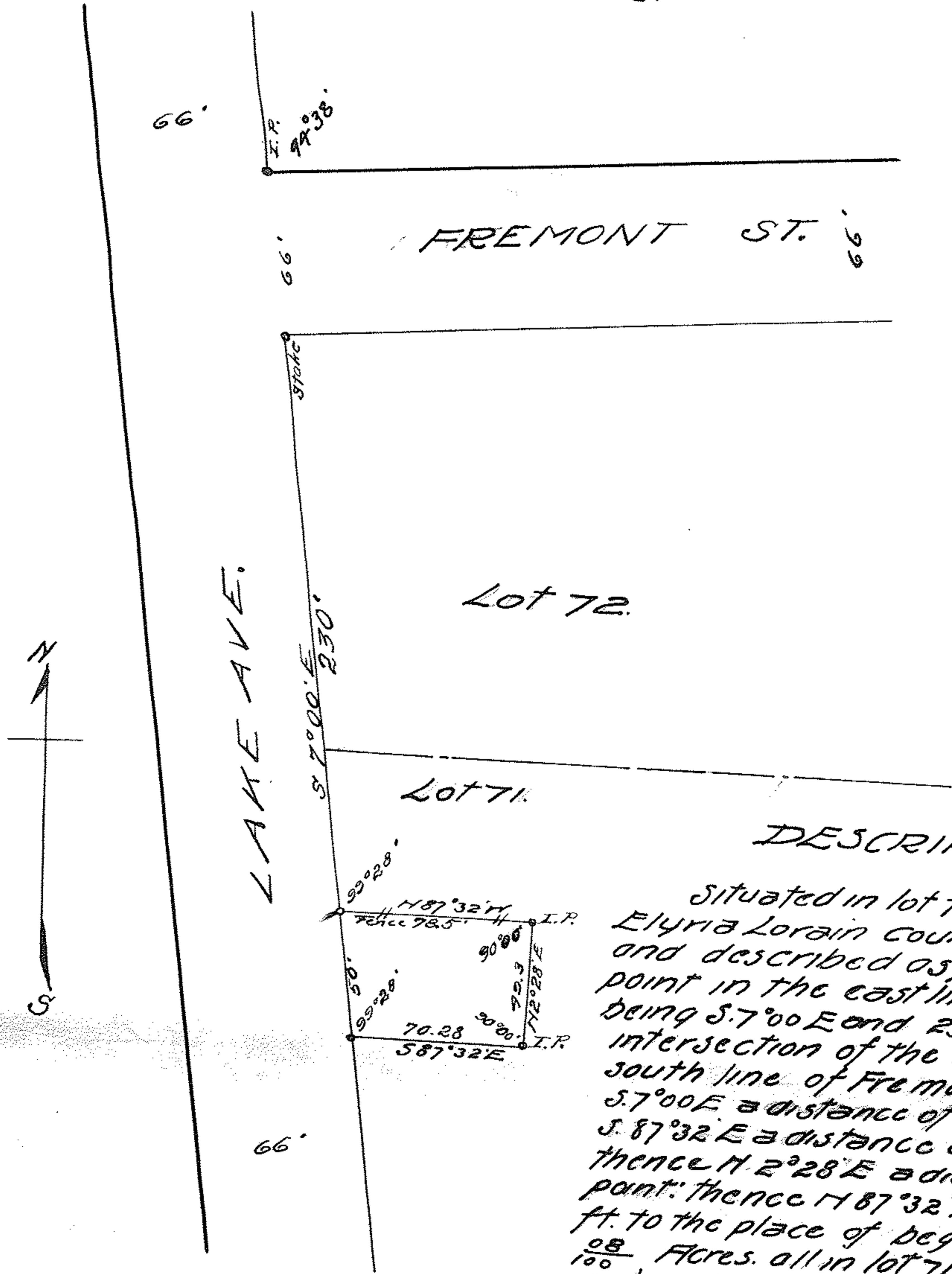
JUNE 25 1907

SCALE 1 IN = 60 FT

W. F. Peters Asst. Eng.  
C. H. Lawrence C. E.

10-157

10-0709



PPN 0624-071-000-777  
MAP P9 6 100

DESCRIPTION

Situated in lot 71 west of Black River Elyria Lorain county Ohio and bounded and described as follows: Beginning at a point in the east line of Lake Ave. said point being S. 7° 00' E and 230 ft. distant from the intersection of the said east line and the south line of Fremont St. running thence S. 7° 00' E a distance of 50 ft. to a point; thence S. 87° 32' E a distance of 70.28 ft. to a point; thence N. 2° 28' E a distance of 49.3 ft to a point; thence N. 87° 32' N a distance of 78.5 ft. to the place of beginning; containing  $\frac{98}{100}$  Acres. all in lot 71 to be the same more or less but subject to all legal highways.

