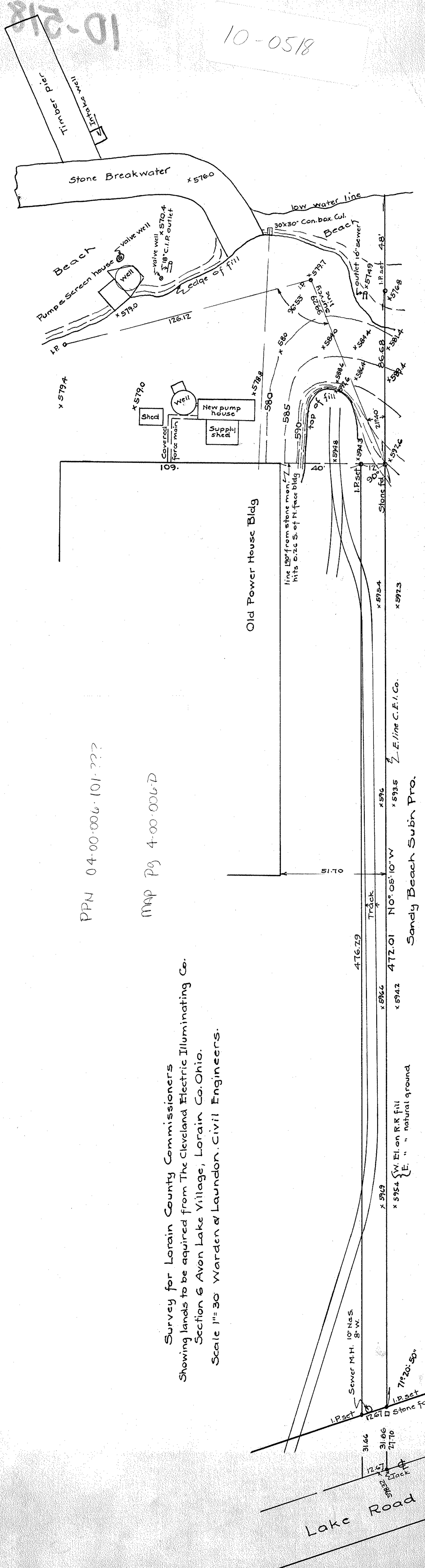


Survey for Lorain County Commissioners
 Showing lands to be acquired from The Cleveland Electric Illuminating Co.
 Section 6 Avon Lake Village, Lorain Co. Ohio.
 Scale 1" = 30' Warden & Laundon. Civil Engineers.

PPN 04-00-006-101-???

MAP Pg 4-00-006-D



Lake Road

Sandy Beach Subin Pro.

E. line C.E.I. Co.

NO. 05. 10" W

W. El. on R.R. fill
 E. " " natural ground

71° 20' 50"

17.67

31.66

21.70

17.67

31.66

21.70

17.67

31.66

21.70

17.67

31.66

21.70

17.67

31.66

21.70

17.67

31.66

21.70

17.67

31.66

21.70

17.67

31.66

21.70

17.67

31.66

21.70

17.67

31.66

21.70

17.67

31.66

21.70

17.67

31.66

21.70

17.67

31.66

21.70

17.67

31.66

21.70

17.67

31.66

21.70

17.67

31.66

21.70

17.67

31.66

21.70

17.67

31.66

21.70

17.67

31.66

21.70

17.67

31.66

21.70

17.67

31.66

21.70

17.67

31.66

21.70

17.67

31.66

21.70

17.67

31.66

21.70

17.67

31.66

21.70

17.67

31.66

21.70

17.67

31.66

21.70

17.67

31.66

21.70

17.67

31.66

21.70

17.67

31.66

21.70

17.67

31.66

21.70

17.67

31.66

21.70

17.67

31.66

21.70

17.67

31.66

21.70

17.67

31.66

21.70

17.67

31.66

21.70

17.67

31.66

21.70

17.67

31.66

21.70

17.67

31.66

21.70

17.67

31.66

21.70

17.67

31.66

21.70

17.67

31.66

21.70

17.67

31.66

21.70

17.67

31.66

21.70

17.67

31.66

21.70

17.67

31.66

21.70

17.67

31.66

21.70

17.67

31.66

21.70

17.67

31.66

21.70

17.67

31.66

21.70

17.67

31.66

21.70

17.67

31.66

21.70

17.67

31.66

21.70

17.67

31.66

21.70

17.67

31.66

21.70

17.67

31.66

21.70

17.67

31.66

21.70

17.67

31.66

21.70

17.67

31.66

21.70

17.67

31.66

21.70

17.67

31.66

21.70

17.67

31.66

21.70

17.67

31.66

21.70

17.67

31.66

21.70

17.67

31.66

21.70

17.67

31.66

21.70

17.67

31.66

21.70

17.67

31.66

21.70

17.67

31.66

21.70

17.67

31.66

21.70

17.67

31.66

21.70

17.67

31.66

21.70

17.67

31.66

21.70

17.67

31.66

21.70

17.67

31.66

21.70

17.67

31.66

21.70

17.67

31.66

21.70

17.67

31.66

21.70

17.67

31.66

21.70

17.67

31.66

21.70

17.67

31.66

21.70

17.67

31.66

21.70

17.67

31.66

21.70

17.67

31.66

21.70

17.67

31.66

21.70

17.67

31.66

21.70

17.67

31.66

21.70

17.67

31.66