

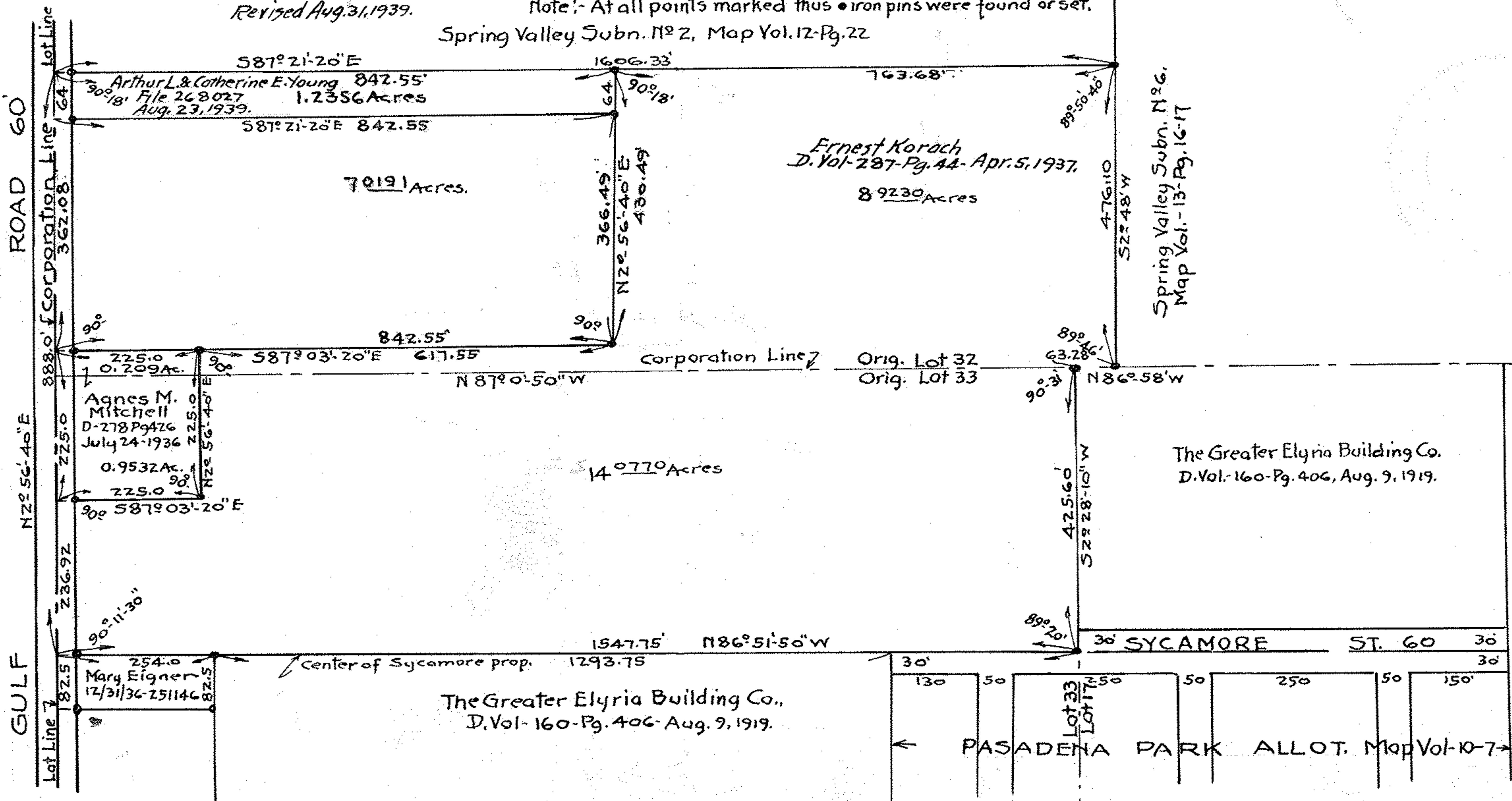
PPN 06-25-032-102.7??
06-25-033-101.???

Survey for
CONRAD & KATHERINA KILCHER.
Deed Vol-157-Pg.561. 6/25/1919.
Original Twp.Lots 32-33- Elyria Twp.,
CITY OF ELYRIA-LORAIN CO.,O.

MAP pg 668

March 15-1937. Scale 1"=200FT.
Revised- August 4, 1939. J.W. Warden-Registered Surveyor
Note:- At all points marked thus • iron pins were found or set.
Spring Valley Subn. No 2, Map Vol.12-Pg.22

Revised Aug.31,1939.



7.0191 Acres.

Ernest Korach
D. Vol-287-Pg.44- Apr. 5, 1937.
8.9230 Acres

Spring Valley Subn. No 6.
Map Vol.-13-Pg.16-17

Agnes M. Mitchell
D-278 Pg 426
July 24-1936
0.9532 Ac.

Mary Eigner
12/31/36-251146
0.2540

The Greater Elyria Building Co.
D. Vol.-160-Pg. 406, Aug. 9, 1919.

The Greater Elyria Building Co.,
D. Vol-160-Pg. 406- Aug. 9, 1919.

PASADENA PARK ALLOT. Map Vol-10-7