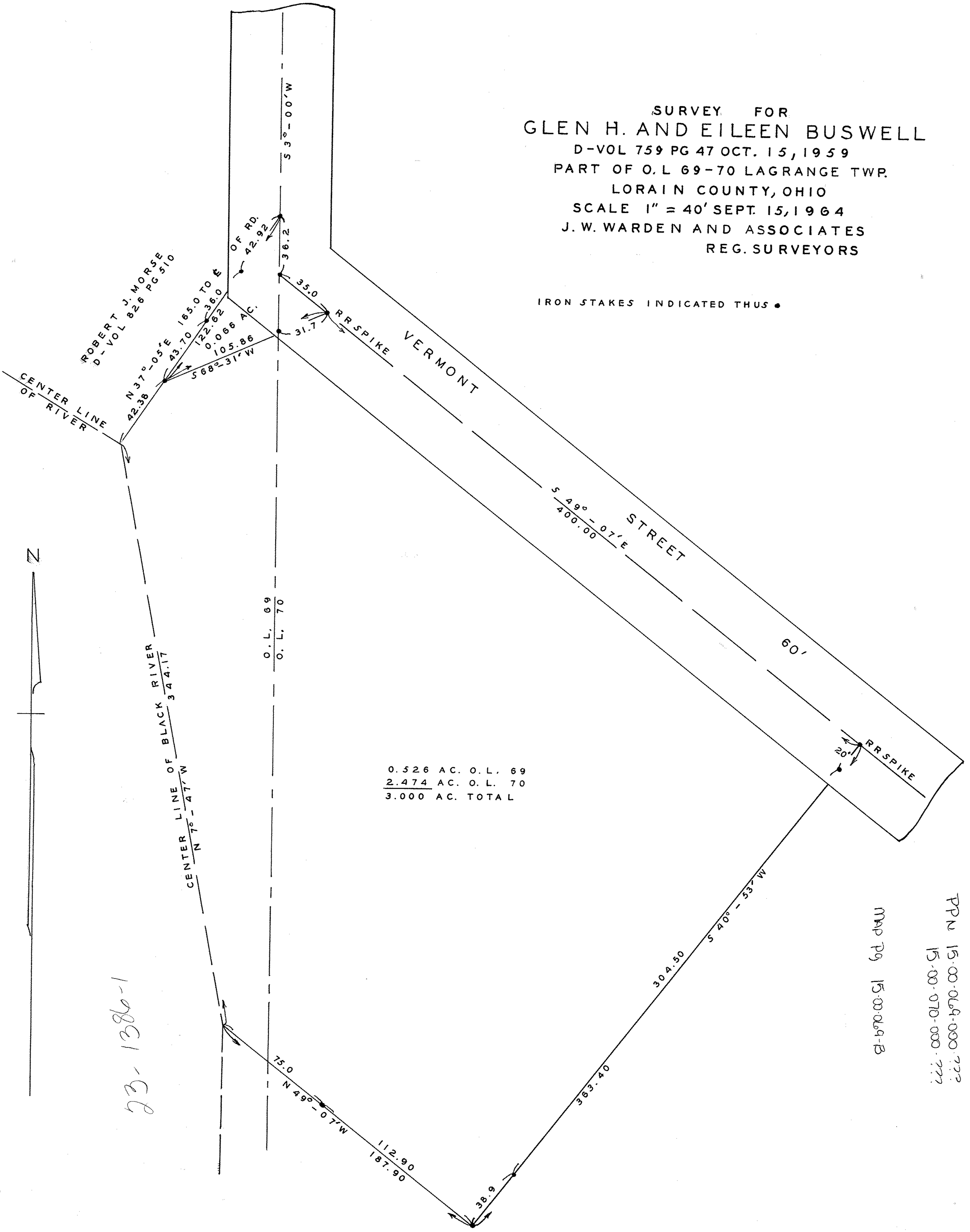


SURVEY FOR
 GLEN H. AND EILEEN BUSWELL
 D-VOL 759 PG 47 OCT. 15, 1959
 PART OF O.L 69-70 LAGRANGE TWP.
 LORAIN COUNTY, OHIO
 SCALE 1" = 40' SEPT. 15, 1964
 J. W. WARDEN AND ASSOCIATES
 REG. SURVEYORS

IRON STAKES INDICATED THUS •

0.526 AC. O.L. 69
 2.474 AC. O.L. 70
 3.000 AC. TOTAL



PPN 15.00-069-000-772
 15.00-070-000-772
 MAP PG 15.00-069-B