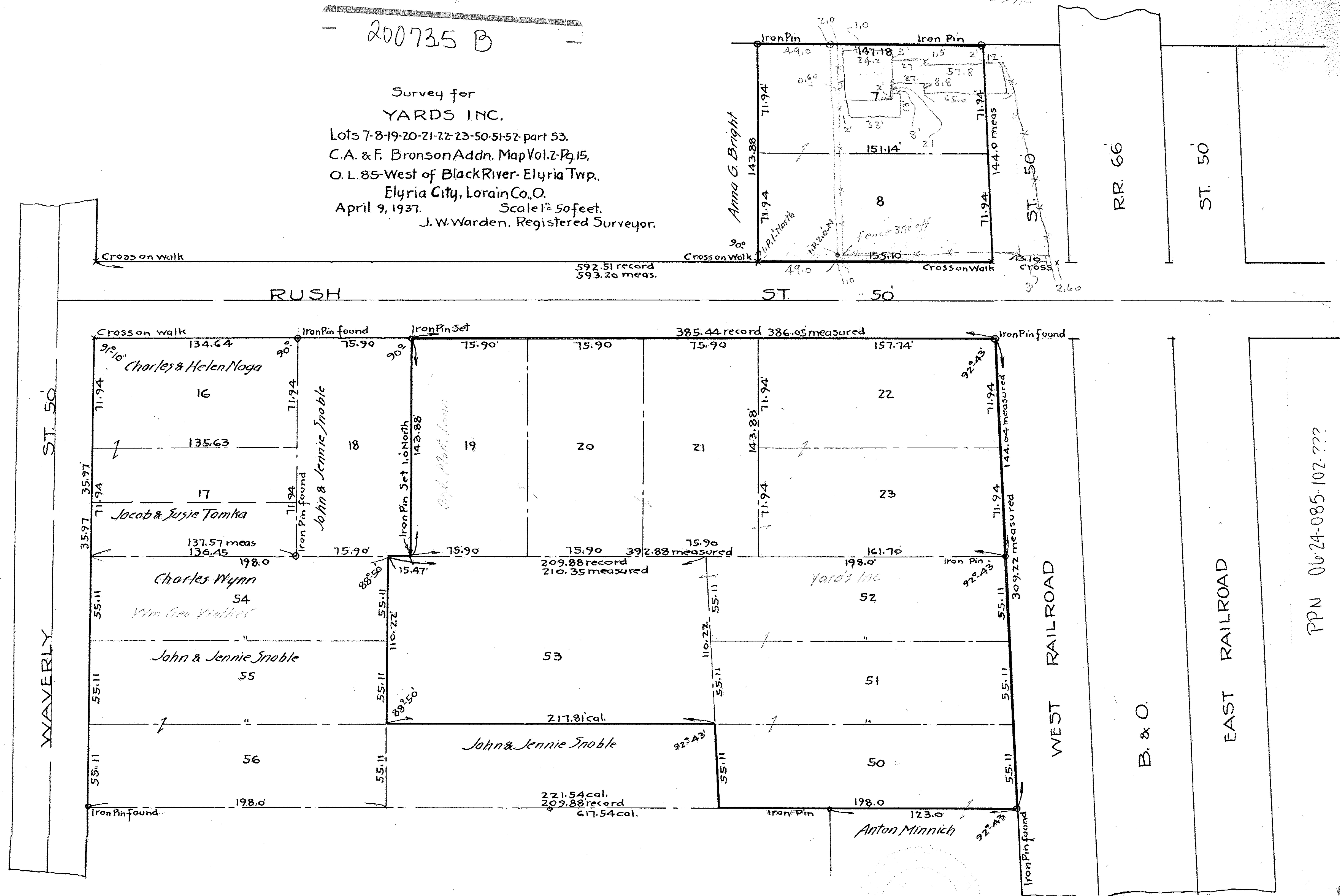


200735 B

Survey for
YARDS INC.
Lots 7-8-19-20-21-22-23-50-51-52 part 53.
C.A. & F. Bronson Addn. Map Vol. 2 Pg. 15.
O.L. 85-West of Black River-Elyria Twp.
Elyria City, Lorain Co., O.
April 9, 1937. Scale 1" = 50 feet.
J.W. Warden, Registered Surveyor.



PPN 06-24-085-102-???

MAP PG 6-98

285-25