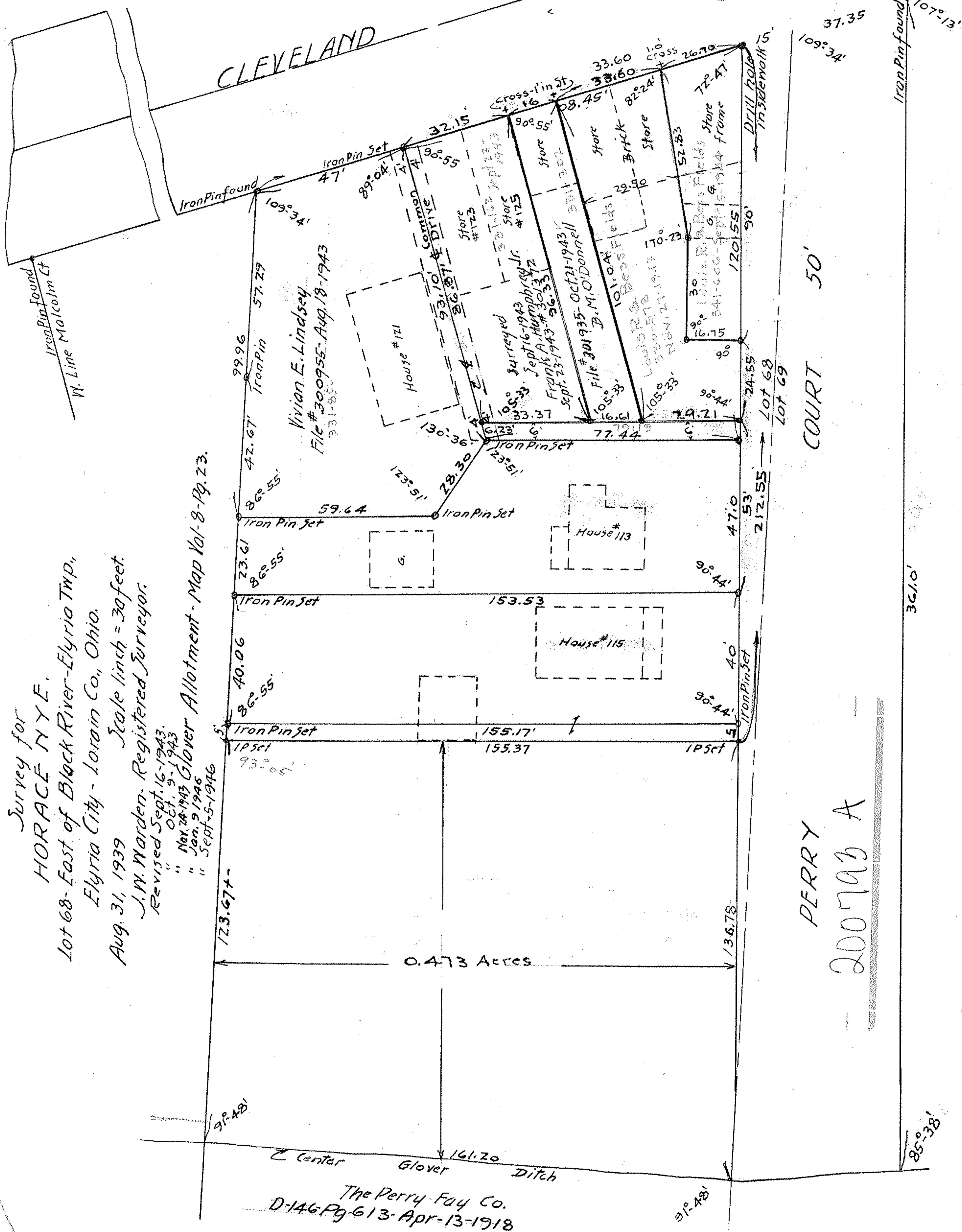


66-183



Survey for
HORACE NYE,
 Lot 68 - East of Black River - Elyria Twp.,
 Elyria City - Lorain Co., Ohio.
 Aug. 31, 1939
 J.W. Warden - Registered Surveyor.
 Revised Sept. 16 - 1943.
 " Oct. 9 - 1943
 " Nov. 24 - 1943
 " Jan. 9 - 1946
 " Sept. 5 - 1946

Glover Allotment - Map Vol-8-Pg. 23.

The Perry-Fay Co.
 D-146 Pg. 613 - Apr-13-1918

PERRY
 200793 A