

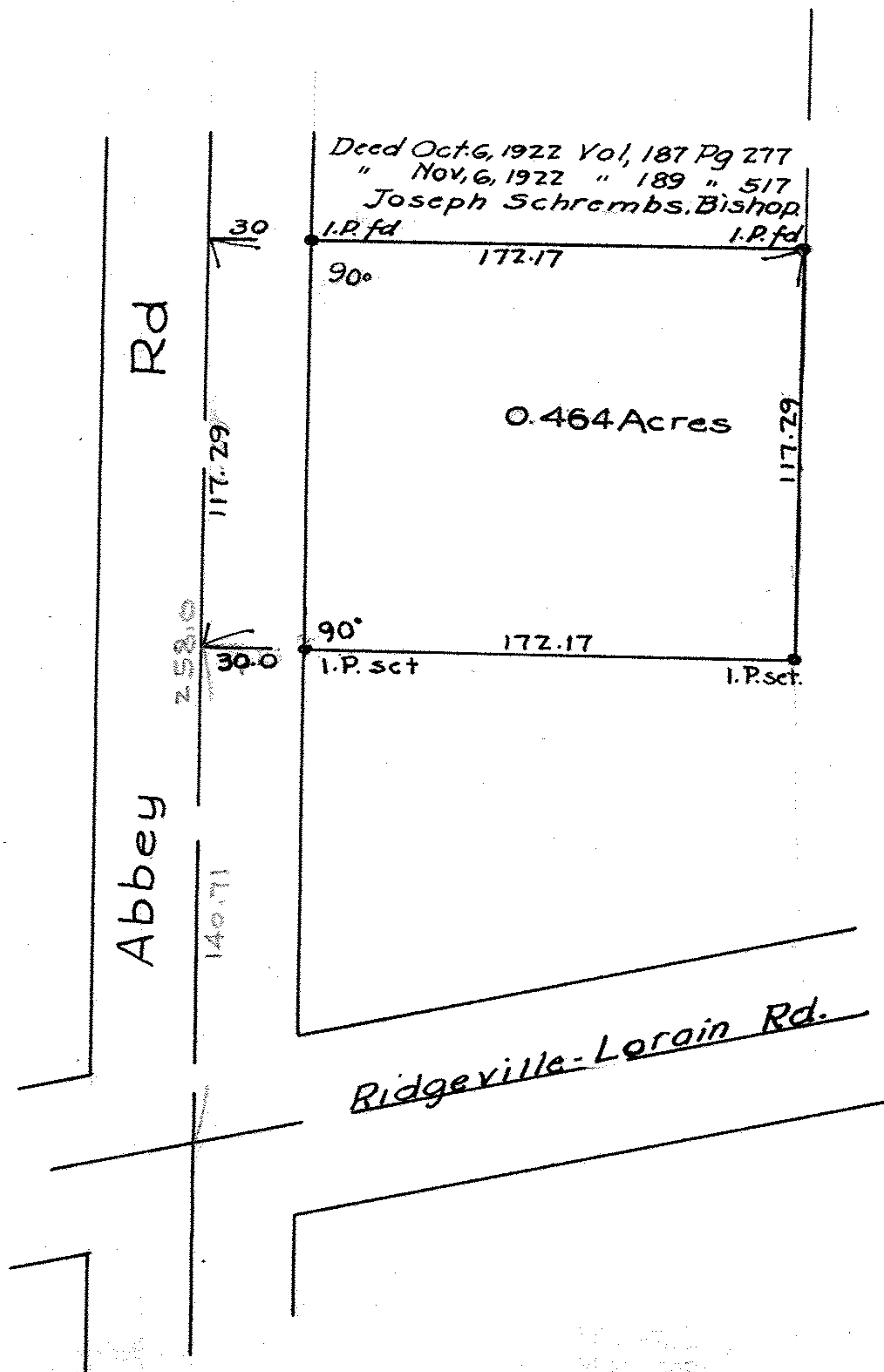
MAP OF SURVEY MADE FOR  
*Henry & Rose Kelling*  
*Original Lot 7 Sheffield Lake Village*

Lorain County, Ohio

Distances are given in feet and decimal parts

Scale, 1 in. 50 Feet  
 Elyria, O.,  
 Order No.,  
 F. B. 18 Pg., 45

Warden & Laundon, C. E.  
 403 ELYRIA BLOCK  
 3-17-26



P.P.N.: 03-00-007-<sup>101</sup>~~60~~-024  
 -025

MAP PG: 03-00-007-A