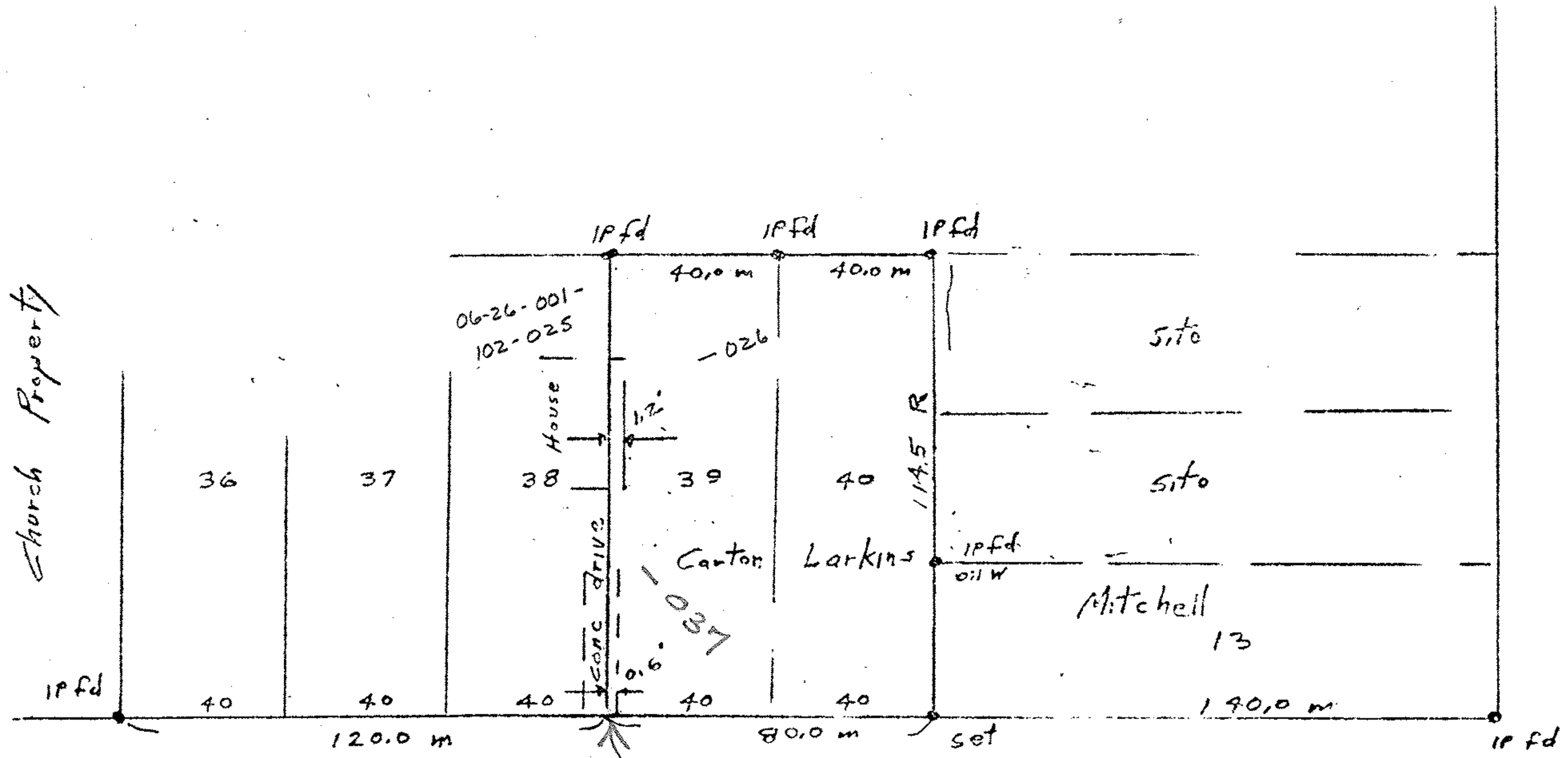


6-137  
L. 1  
T. 26

#16932

06-26-001-102-10



N  
West Ave

#16932

|                   |
|-------------------|
| APPROVED          |
| TRAIN CO.         |
| MAP DEPT.         |
| DATE 8-11-86      |
| PAGE 6-137        |
| BY C. FRANCIS     |
| VOID AFTER No 932 |

Scale 1" = 40'

16th St  
036

John Pozgurak  
P.S. # 5292

Survey of sublots 39, 40  
Mussey Ave All't B Vol 8 Pg 49  
Part of original Lot  
Between the Black River's  
City of Elyria  
Lorain County Ohio  
Scale 1" = 40' July 11, 1925