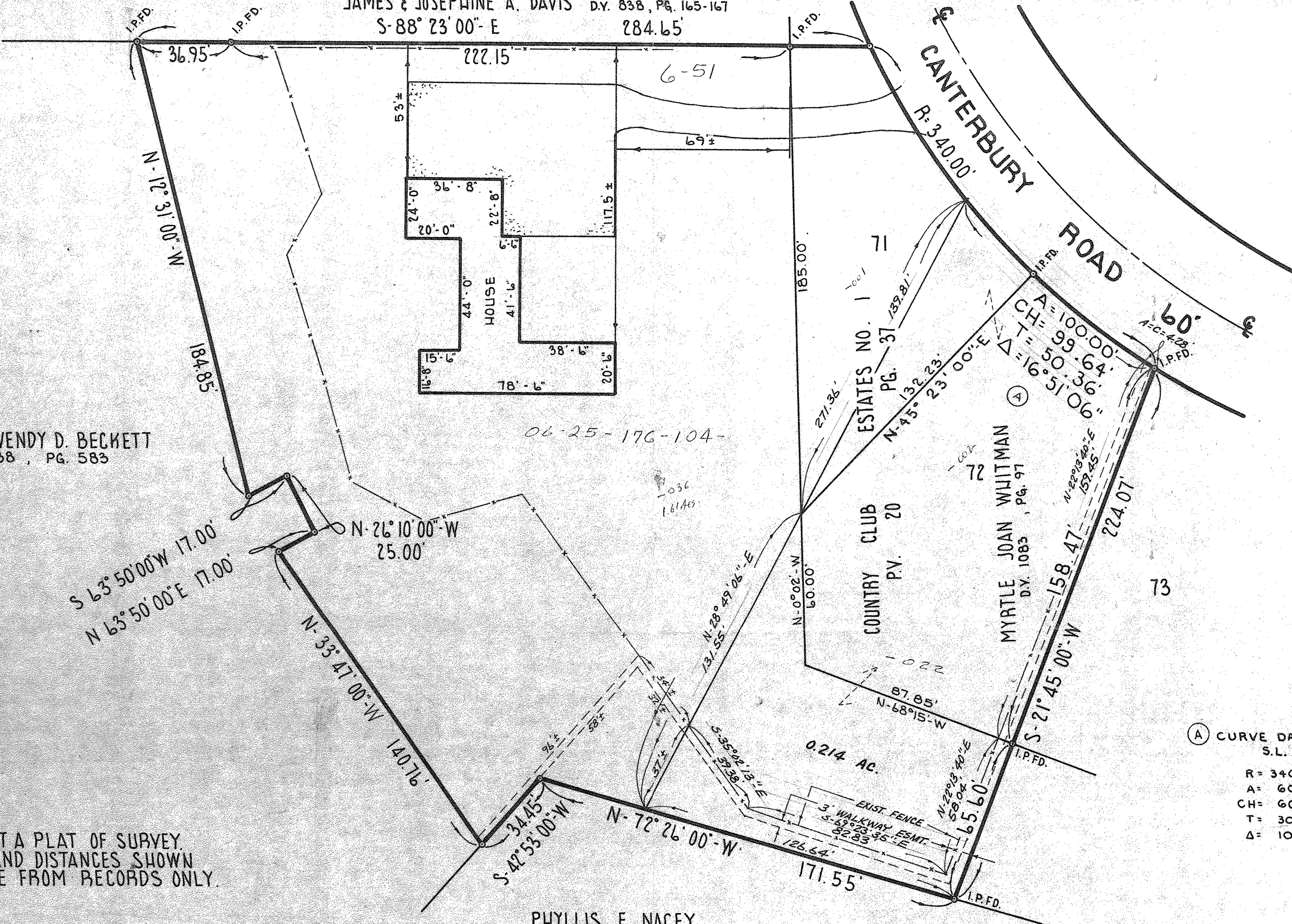


JAMES & JOSEPHINE A. DAVIS D.Y. 838, PG. 165-167
 S-88° 23' 00" E 284.65'



JOHN D. & WENDY D. BECKETT
 D.Y. 838, PG. 583

06-25-176-104-

056
 1.61465

(A) CURVE DATA FOR S.L. 72

R =	340.00'
A =	60.08'
CH =	60.00'
T =	30.11'
Δ =	10° 07' 27"

NOTE: THIS IS NOT A PLAT OF SURVEY.
 BEARINGS AND DISTANCES SHOWN
 HEREON ARE FROM RECORDS ONLY.

PHYLLIS F. NACEY
 D.Y. 791, PG. 36


06-25-176-104-001, 002, 022, 023, 039, 040

9831
 06-25-175-
 176

PROJECT
SURVEY AND LOCATION
 OF PART OF
 ORIGINAL ELYRIA TOWNSHIP LOTS NOS. 175-176, EAST OF RIVER
 CITY OF ELYRIA COUNTY OF LOBAIN STATE OF OHIO

Prepared for: WORTH FAUVER SR.

Rev.	5-28-76
Drawn by:	G.J.E.
Checked by:	
App. by:	
Scale:	1" = 30'
Date:	8/1/75



KLEINOEDER-SCHMIDT

and ASSOCIATES

ENGINEERS — SURVEYORS — CONSULTANTS in LAND PLANNING

ELYRIA - NORWALK - MEDINA OHIO

REFERENCES	
SHEET NO. 1 of 1	JOB NO. 75-140