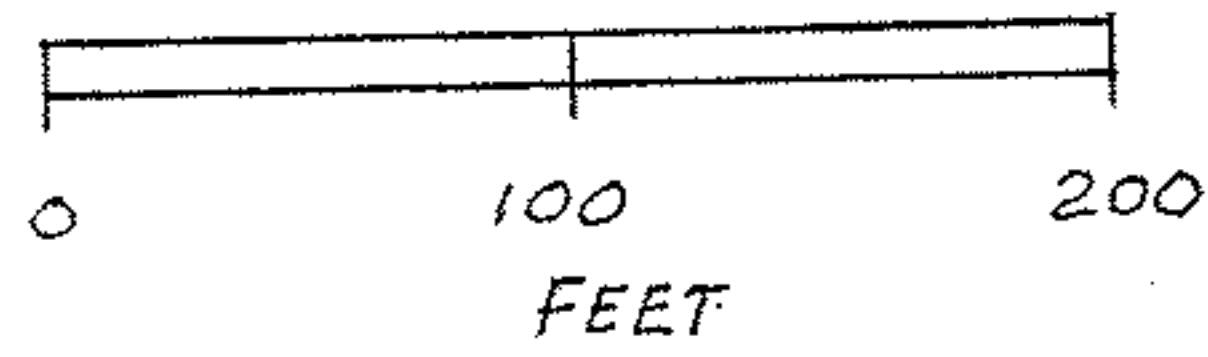


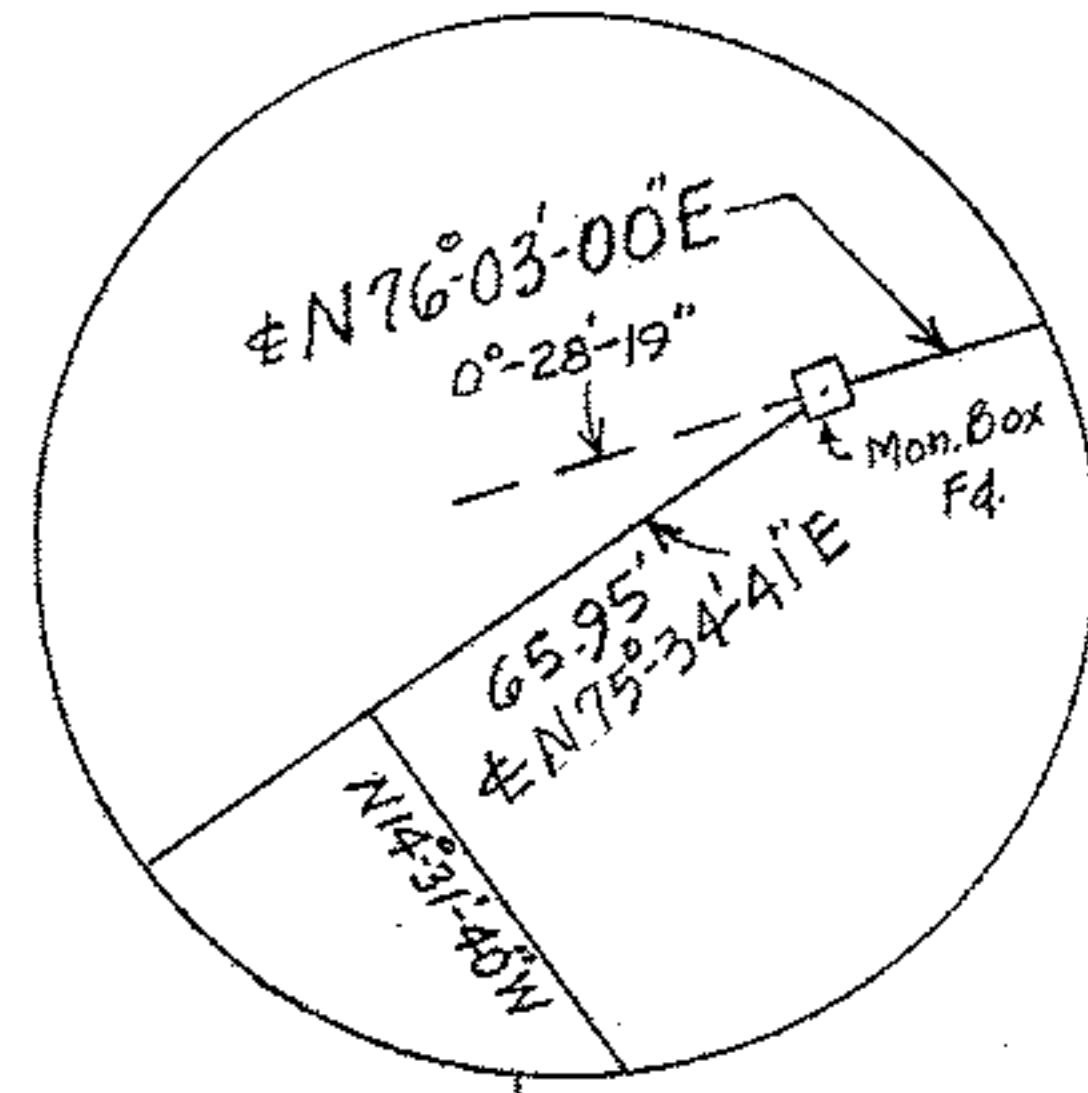
NORTH

Assumed Bearing

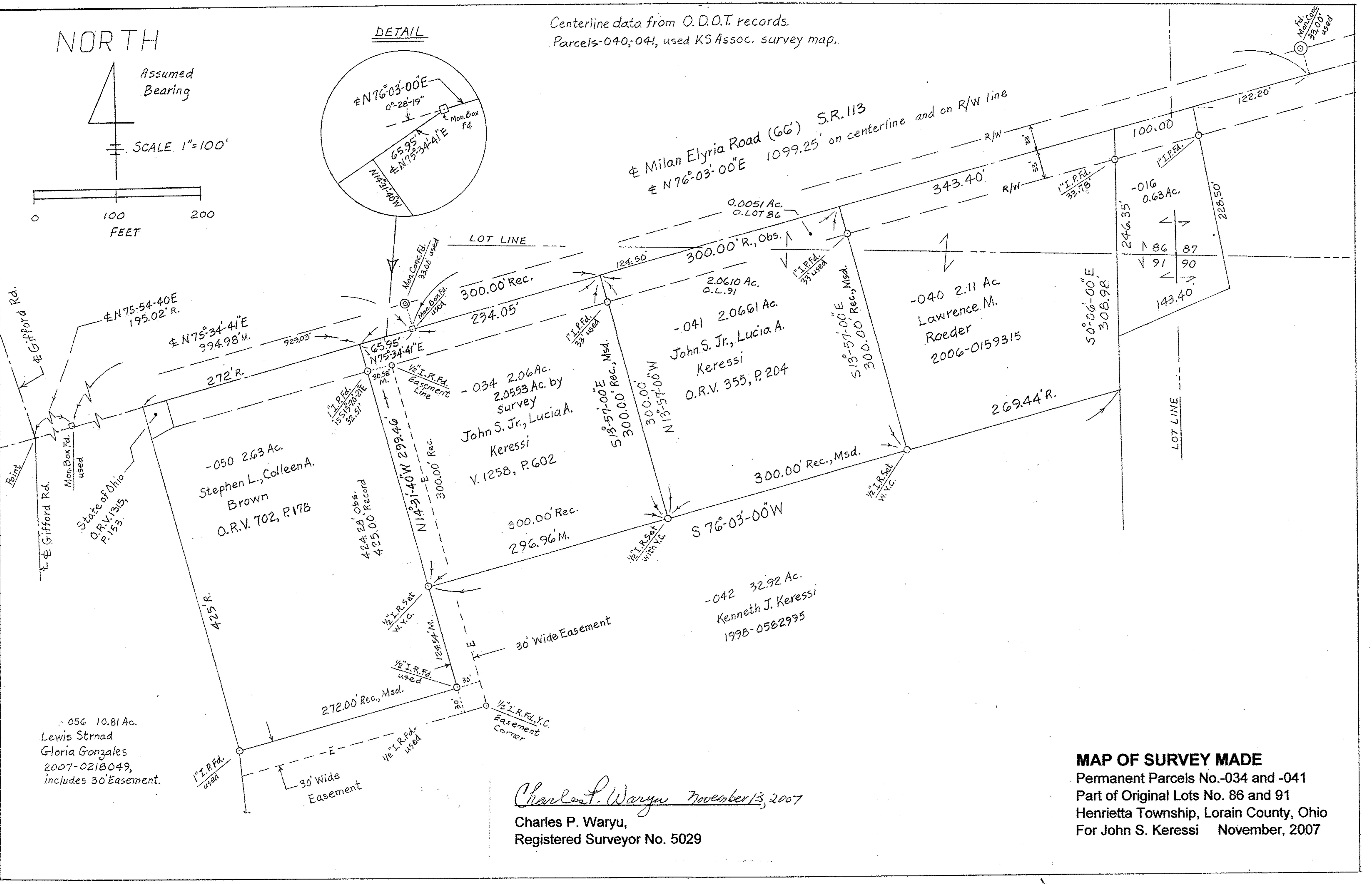
SCALE 1"=100'



DETAIL



Centerline data from O.D.O.T records.
Parcels-040,-041, used KS Assoc. survey map.



-056 10.81 Ac.
Lewis Strnad
Gloria Gonzales
2007-0218049,
includes 30' Easement.

-050 2.63 Ac.
Stephen L., Colleen A.
Brown
O.R.V. 702, P.178

-034 2.06 Ac.
2.0553 Ac. by
survey
John S. Jr., Lucia A.
Keressi
V.1258, P.602

-041 2.0661 Ac.
John S. Jr., Lucia A.
Keressi
O.R.V. 355, P.204

-042 32.92 Ac.
Kenneth J. Keressi
1998-0582995

-040 2.11 Ac.
Lawrence M.
Roeder
2006-0159315

Charles P. Waryu November 13, 2007
Charles P. Waryu,
Registered Surveyor No. 5029

MAP OF SURVEY MADE
Permanent Parcels No.-034 and -041
Part of Original Lots No. 86 and 91
Henrietta Township, Lorain County, Ohio
For John S. Keressi November, 2007