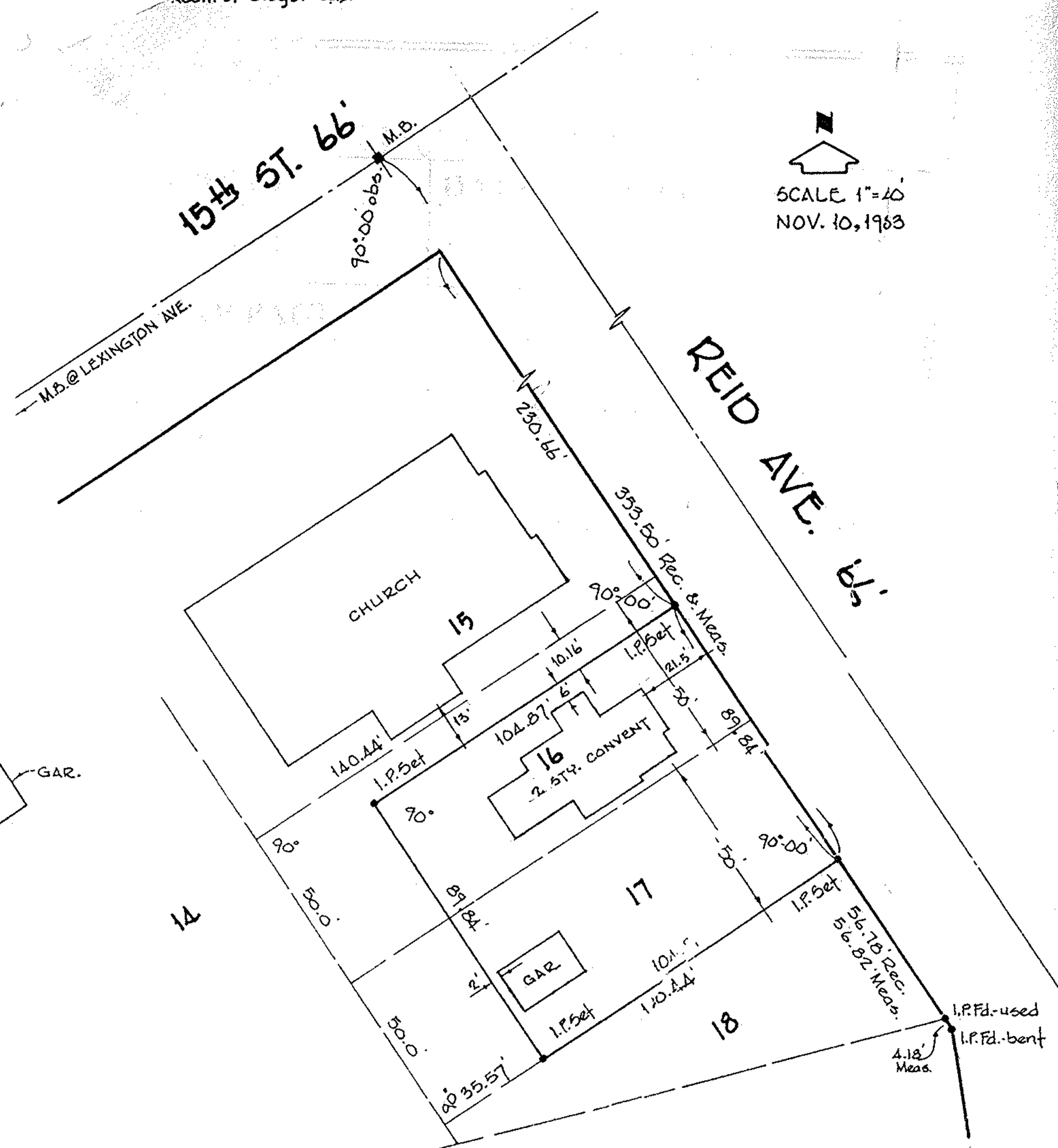


Addn. of Bldgs. R.G.S.

SCALE 1"=40'
NOV. 10, 1963



SURVEY FOR
DIOCESE OF CLEVELAND
ST. JOSEPH - LORAIN

PART OF S/L'S 16 & 17 of S. CHAMBERLAIN RESUBN OF BLOCK 33
 PLAT VOL. 3 PG. 38 O.L. 3 BLACK RIVER TWP. - LORAIN CITY - OHIO

Job No. 83-1242
 7B. 176 P. 32

02-01-003

LAUNDON • SIMON • CAHL & ASSOC.
 ENGINEERS SURVEYORS