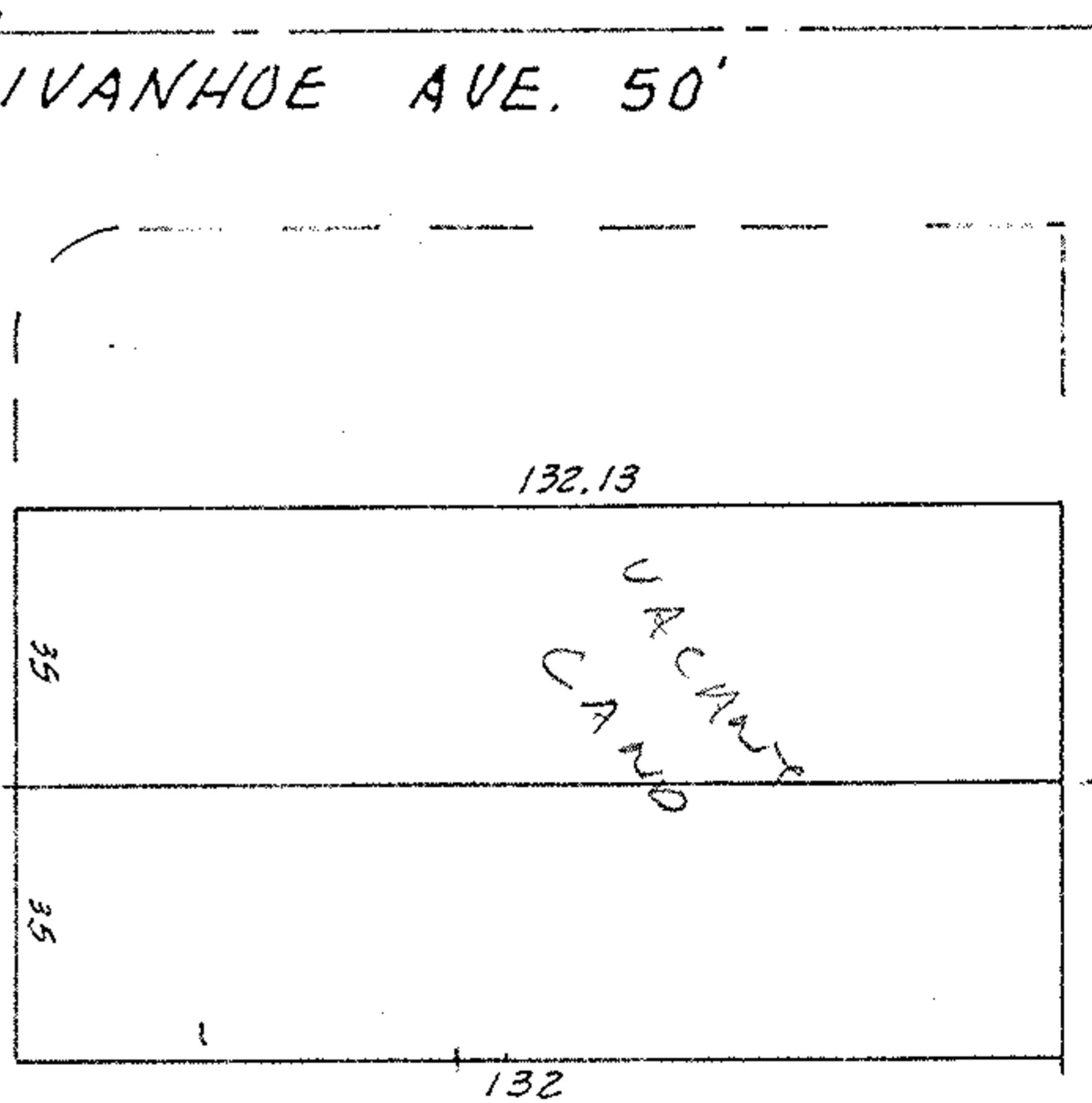
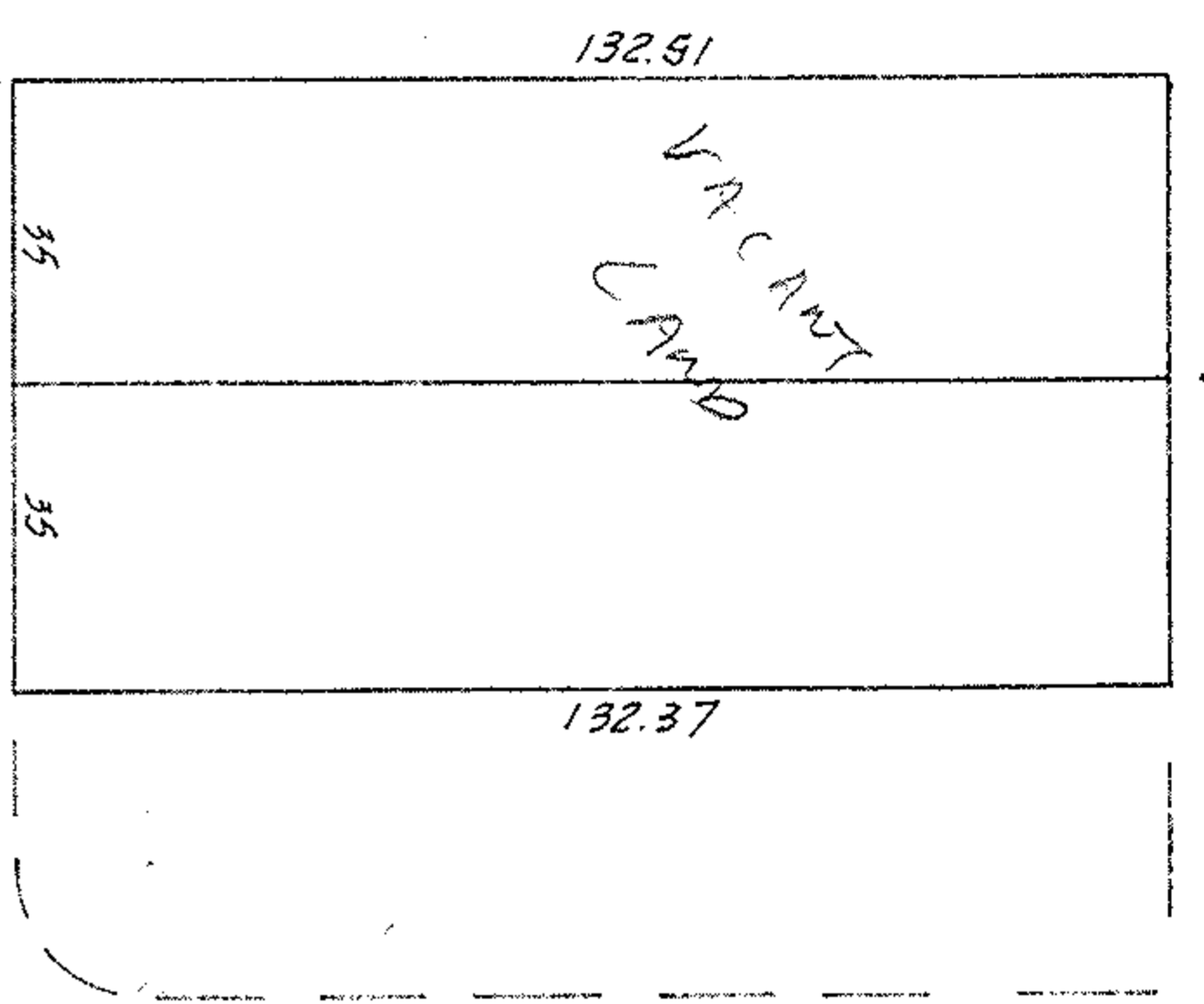


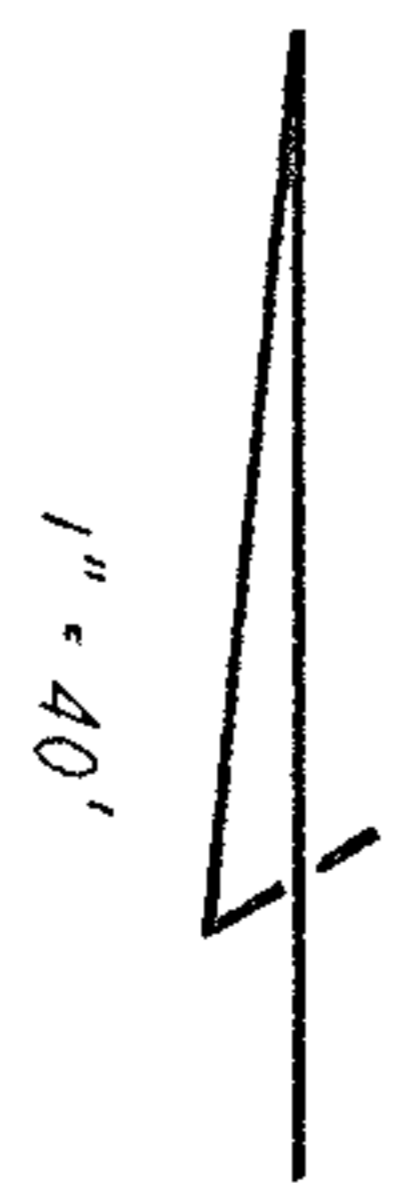
Block D Sublots 1 & 2

Block E Sublots 3 & 4



LAFAYETTE BLVD 70'

IVANHOE AVE. 50'



SUBLOTS #23 & 24 of BLOCK D plus SUBLOTS #2 & 3 of BLOCK E
 of CORAL BEACH SUBDIVISION
 PLAT VOL. 11 PAGES 17 & 18
 PART of ORIG. SHEFFIELD TWP. LOT 37
 NOW in CITY of SHEFFIELD LAKE, OHIO

McGLINCHY & ASSOCIATES
 MAY 1977 #771959
 MIDT F-8739-E