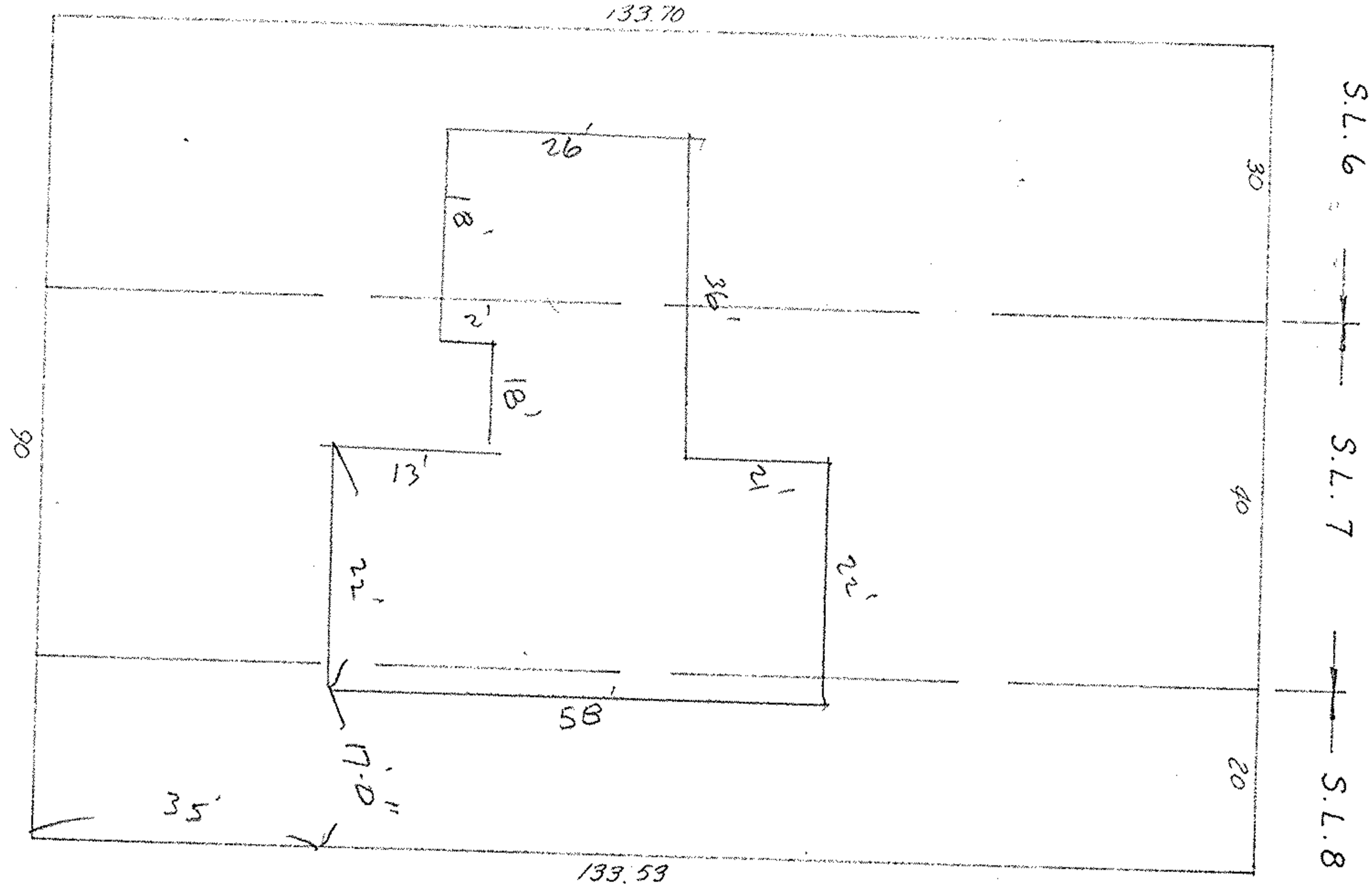


LAFAYETTE BLVD. 70'



11
26
21
—
58

SUBLOT 7 & PARTS of 6 & 8 of BLOCK 'D' CORAL BEACH SUBD'N.

PLAT VOL. 11 PAGES 17 & 18
PART of ORIG. SHEFFIELD TWP. LOT 37
NOW in CITY of SHEFFIELD LAKE, OHIO

McGLINCHY & ASSOCIATES

JULY 1977 #772005