

Reph Corporation V1206 P76

Exist. Culvert

MAP OF SURVEY OF 1.0303 ACRES OF LAND  
D.L.44 AMHERST TWP LORAIN CO. OHIO  
Made at request of Al Droza  
By Charles P. Warty, Reg. Surveyor No. 5029  
6/2/79 Rev. 3/22/80  
143.70' m

Robert J. & Karen J. Barckert  
V. 1105 P. 68

Amelia Barckert  
V. 1035 P. 889, 890

1.0303 ACRES

-049  
1.03 A.

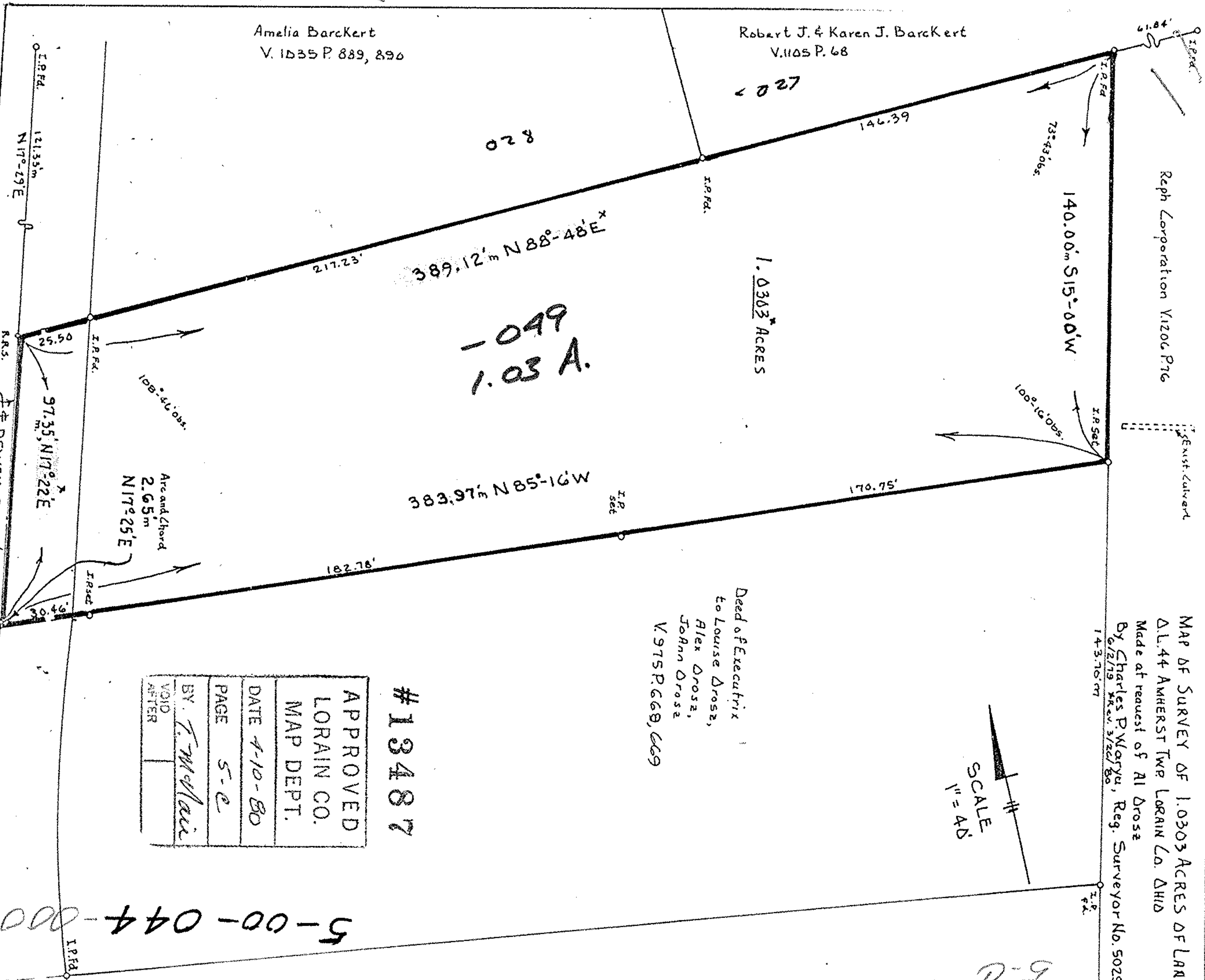
Deed of Executrix  
to Louise Droza,  
Alex Droza,  
JoAnn Droza  
V. 975 P. 669, 669

SCALE  
1" = 40'

APPROVED
LORAIN CO.
MAP DEPT.
DATE 4-10-80
PAGE 5-e
BY T. McNeil
VOID AFTER

# 13487

JE Radius = 1288.11'



5-00-044-000

5-0