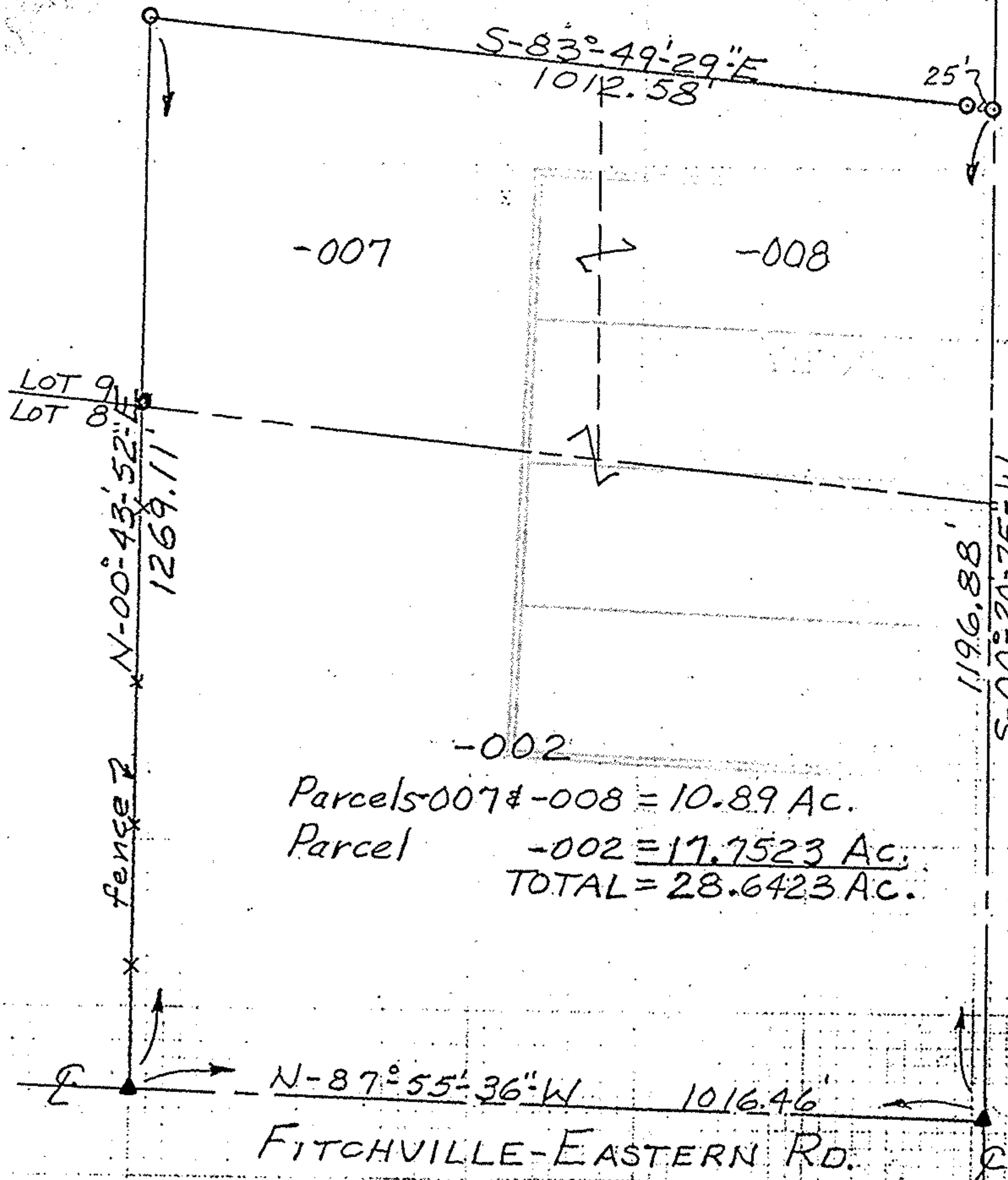


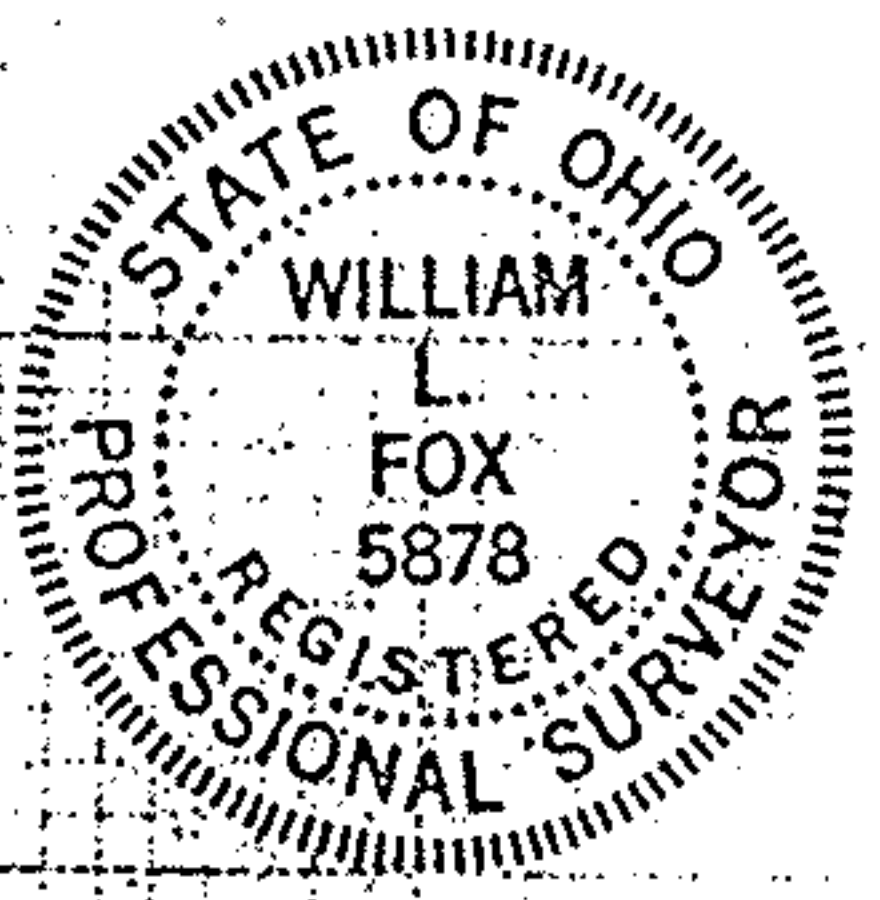
PLAT OF SURVEY FOR 28.6423 ACRE PARCEL  
 PART OF ORIGINAL LOTS 8 & 9  
 ROCHESTER TWP., LORAIN COUNTY, OHIO



Parcels -007 & -008 = 10.89 Ac.  
 Parcel -002 = 17.7523 Ac.  
 TOTAL = 28.6423 Ac.

Scale: 1" = 200'

- LEGEND
- 1/2 inch Re-Bar set
  - ▲ Railroad Spike Found



*William L. Fox*  
 William L. Fox, P.S.  
 Registered Sur. No. 5878