

9-C

4758

09-00-037-000-

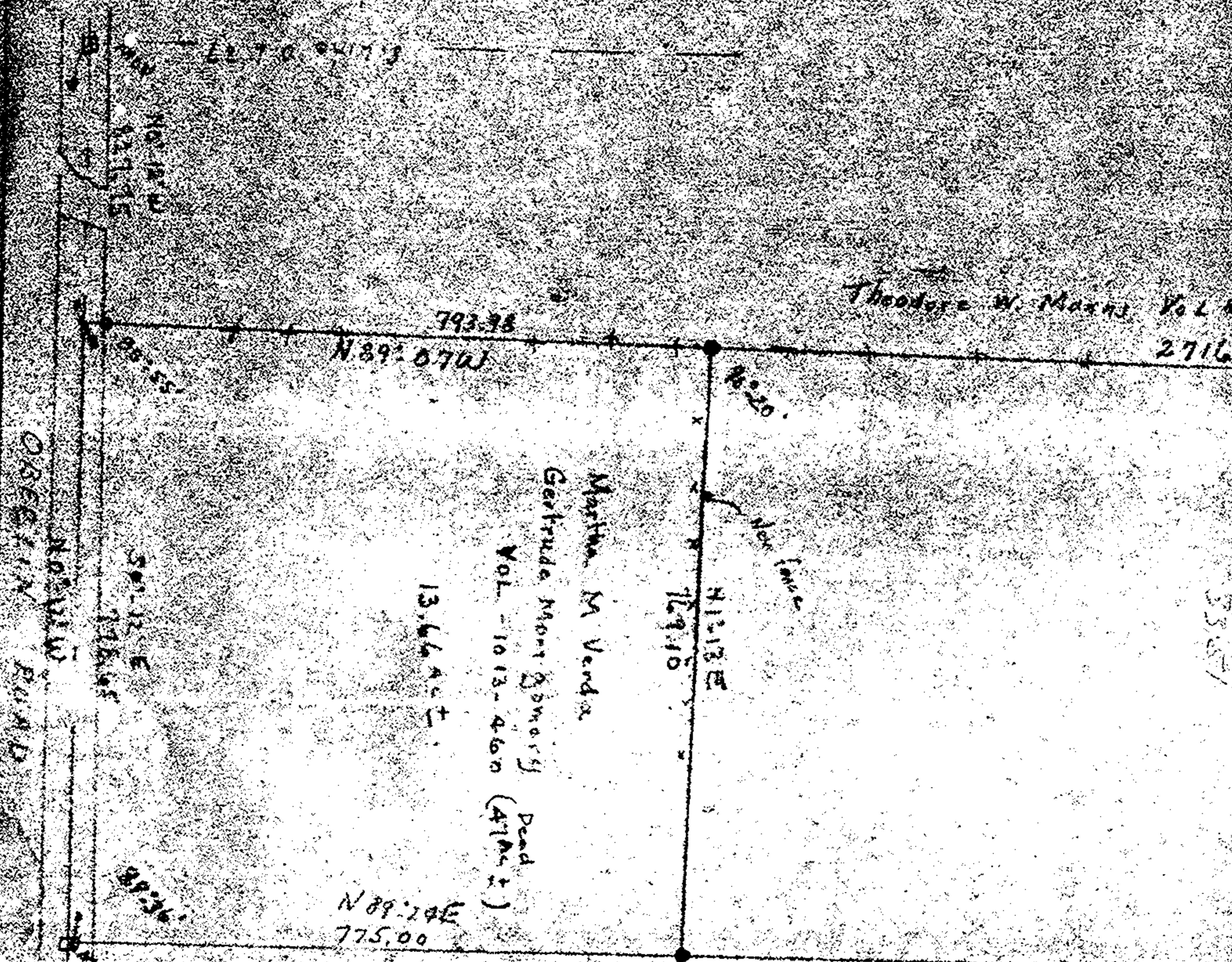
APPROVED
 LORAIN CO.
 MAP DEPT.
 DATE: 7-27-82
 PAGE: 9-C
 BY: C. Francis
 VOID AFTER:

Theodore W. Maxon Vol 89 2716.9

499

1923.0
N89:57W

Vol. 1011-688
Robert W. Hemminger
& Jean Hemminger



Martin M. Vanda
Gertrude Mont. Somers
VOL. 1013-460 (A1A4:2)
13.664 ±
Dead End

Raymond & Cathryn Bacon
Vol 1148-852

S 87:50 W 793.87
S 87:50 E 1923.23
N 89:24 E 1924.23

N 0:24 E 744.6
W 10:01.37



Map of Survey part of O.L. 37 Ranges Twp. Lorain Co. Ohio
Scale 1" = 200'
Map 7, 1977
By Arnold F. Koepf Registered Surveyor No. 4306