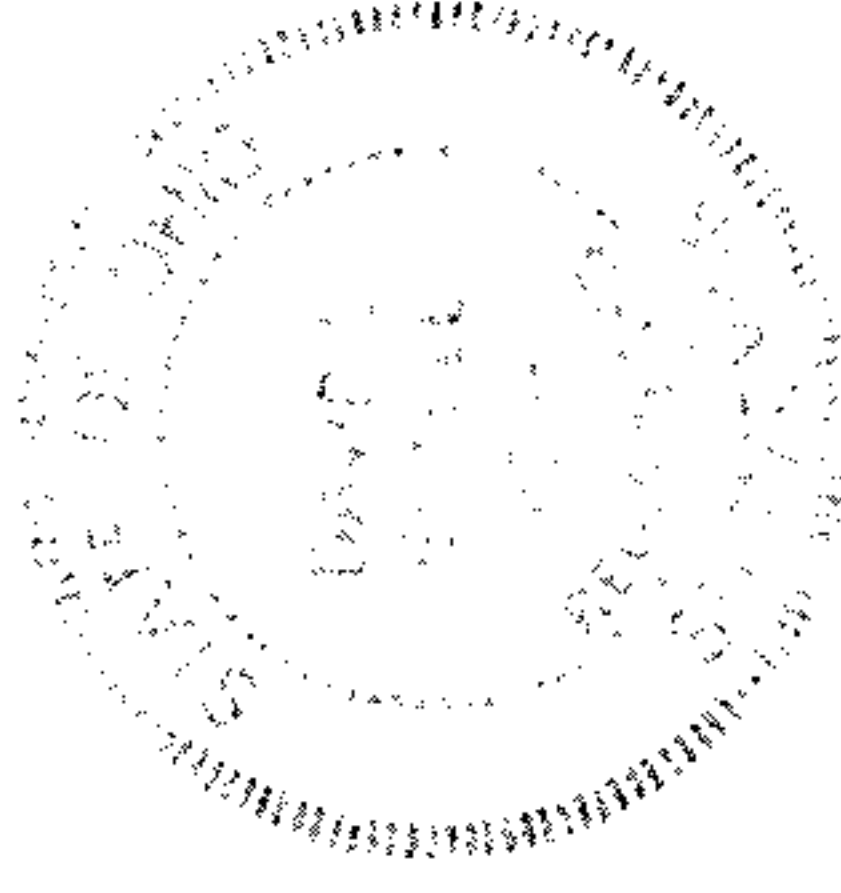


UPDATED & REVISED 10-10-91
 K&S ASSOCIATES INC.
 ENGINEERS SURVEYORS

David A. Powell
 REG. SURV. NO. 6333

1.0663 AC PCL, 1.1357 AC PCL, 2.5437 AC PCL



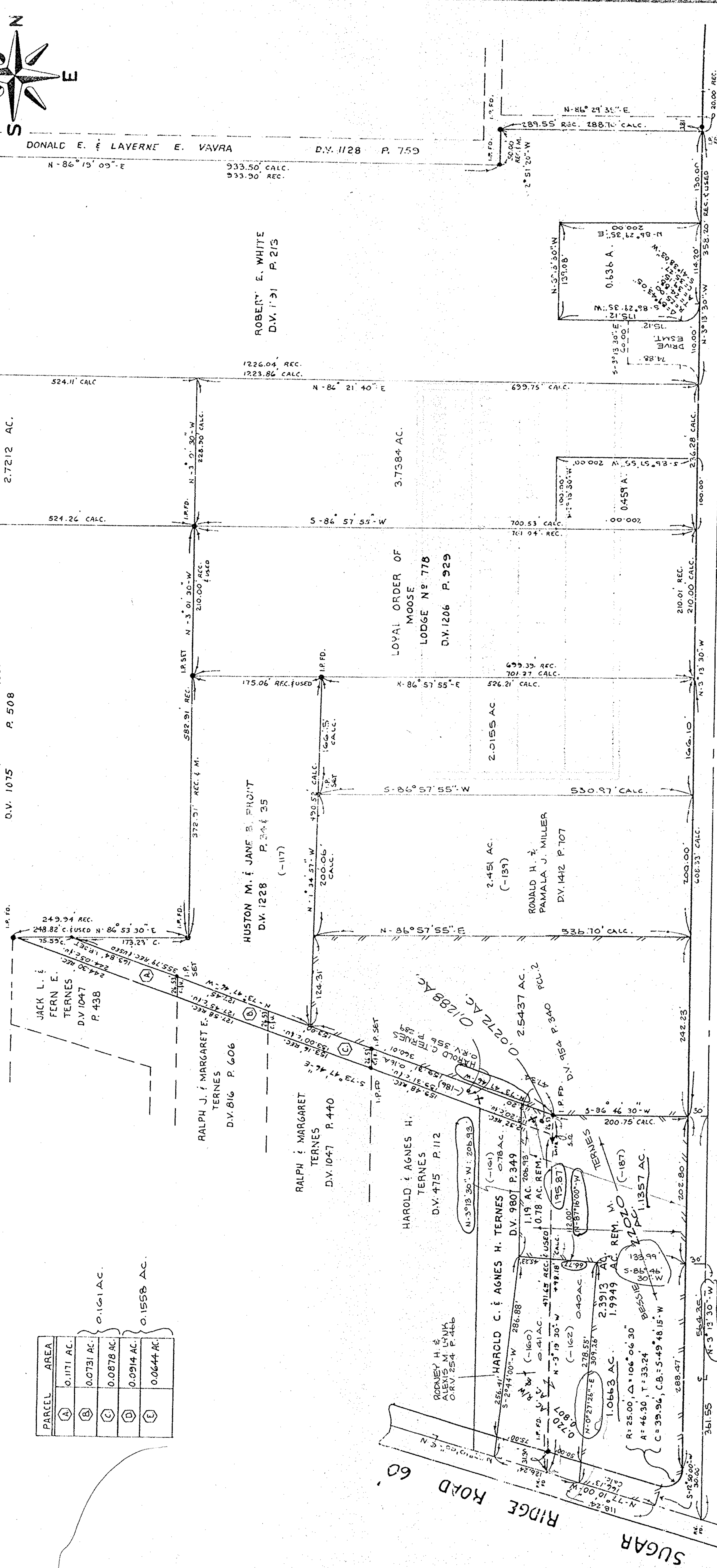
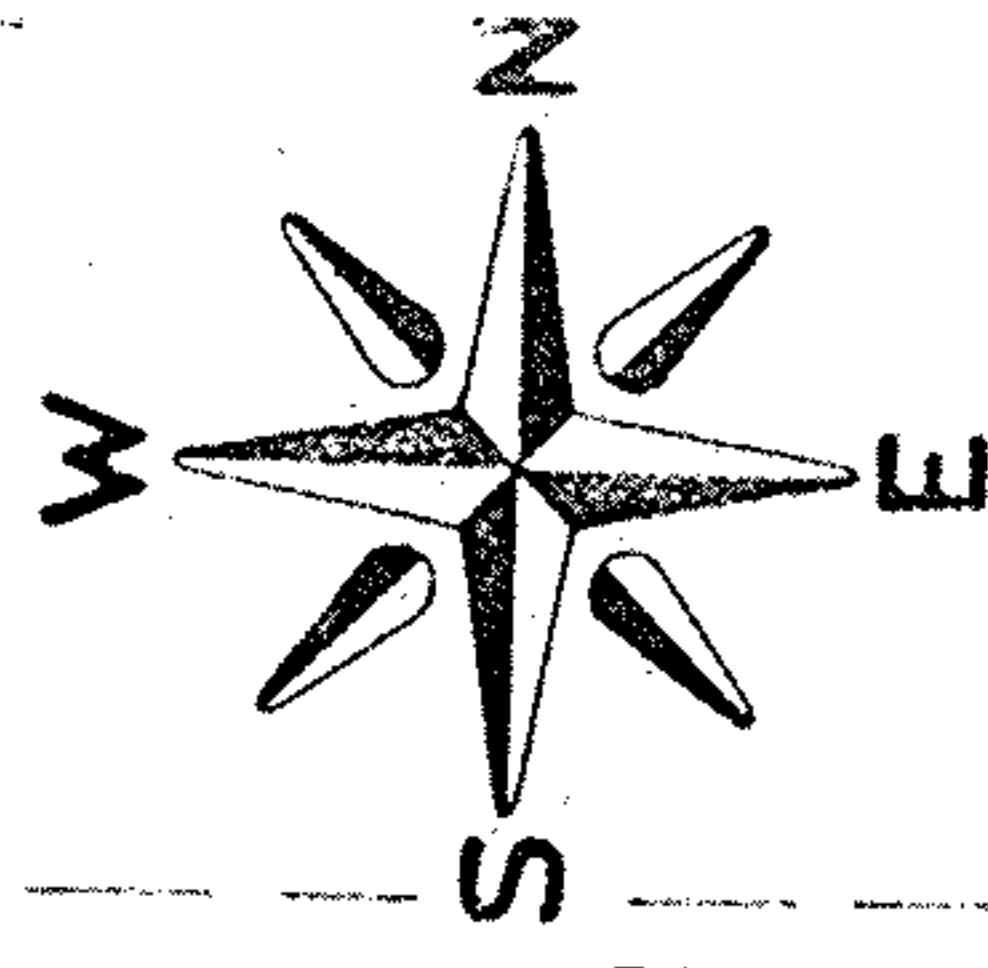
PARCEL	AREA
A	0.1171 AC.
B	0.0731 AC.
C	0.0878 AC.
D	0.0914 AC.
E	0.0644 AC.

0.161 AC.

0.1558 AC.

EAST R/W S.R. 57

57



TERNES AVENUE 60'

60'

0.1.9
0.1.7

PROJECT

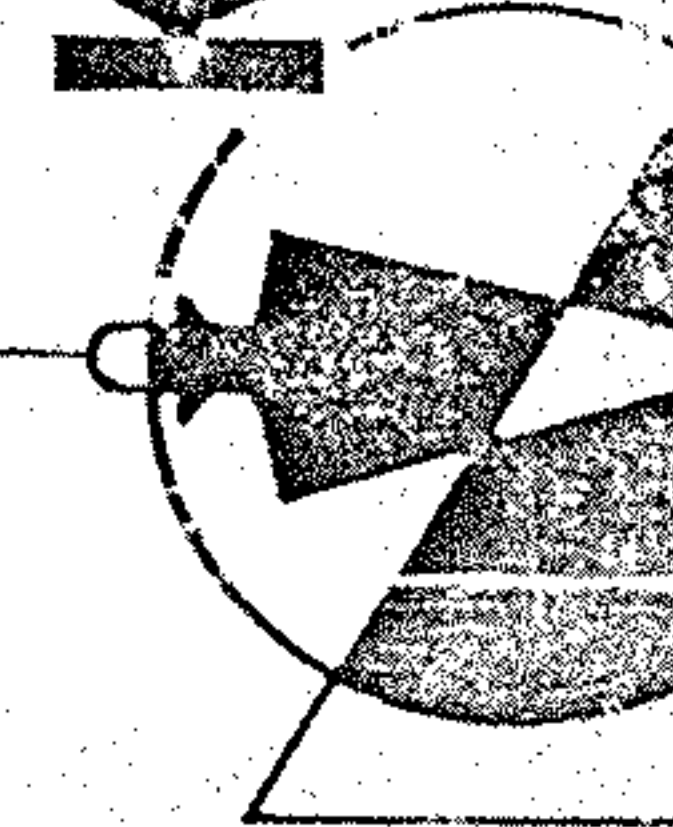
BOUNDARY SURVEY
 OF PART OF
 ORIGINAL ELYRIA TOWNSHIP (EAST OF THE RIVER)
 LOT # 7
 CITY OF ELYRIA, COUNTY OF LORAIN
 STATE OF OHIO

Prepared for: **HAROLD TERNES**

Rev.	Drawn by:
10-9-85	K.V.S.
10-3-85	
8-5-85	
7-7-85	
6-25-85	
7-22-85	

Checked by:
 App. by:
 Scale: 1" = 100'
 Date: OCTOBER, 1979

KLEINODER-SCHMIDT
 and ASSOCIATES



ENGINEERS — SURVEYORS — CONSULTANTS IN LAND PLANNING
 ELYRIA - MC WALK - MEDINA OHIO

SHEET NO. 1 of 1
 JOB NO. 72-97

REV. 12-28-89

REV. 1-01-89

REV. 10-10-81

REV. 09-01-84