



Scale 1" = 30 ft  
Date: July 28, 1997

LOT SPLIT & ASSEMBLY  
FOR

KUGLER HOMES, INC.

SITUATED IN THE CITY OF AVON, COUNTY OF LORAIN,  
& STATE OF OHIO & KNOWN AS BEING S/L'S 12, 13, & 14  
IN ARBOR ACRES SUBDIVISION, VOL. 58, PGS. 54 & 55.

100-015-110-061, 0923, 089  
(0400015110089, 90)



**APPROVALS**

THIS PLAT APPROVED BY THE PLANNING COMMISSION OF  
THE CITY OF AVON.

THIS 19<sup>th</sup> DAY OF November, 1997.

*Paul Brual*  
PLANNING COMMISSION

THIS PLAT APPROVED BY THE DIRECTOR OF ENGINEERING OF  
THE CITY OF AVON.

THIS 19<sup>th</sup> DAY OF November, 1997.

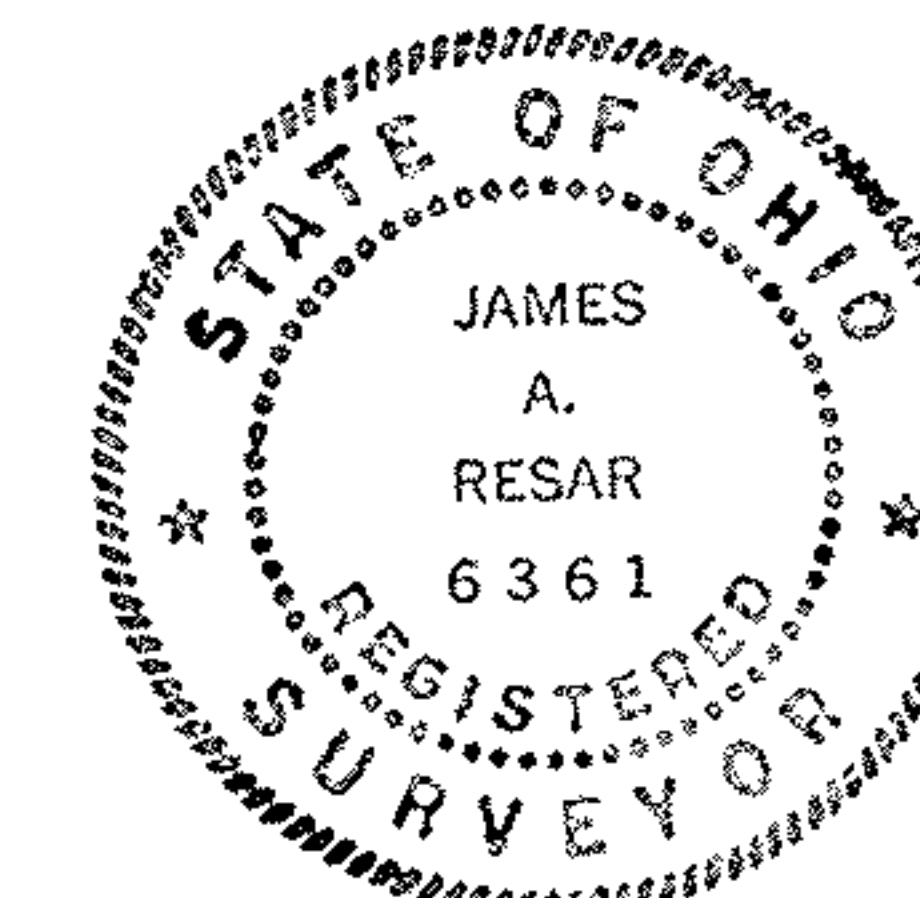
*Michael Bruehl*  
ENGINEER

**CERTIFICATION**

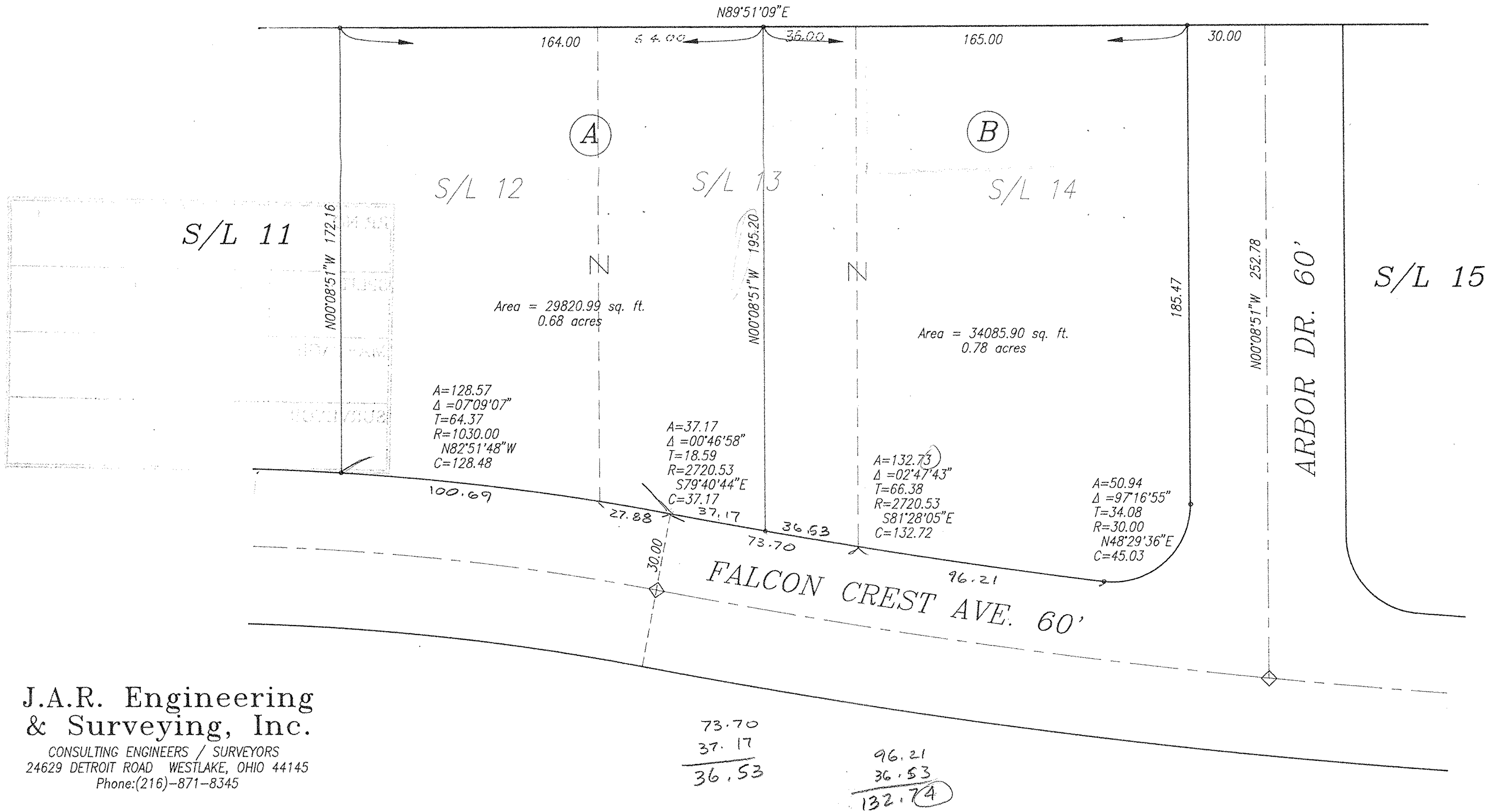
DIMENSIONS SHOWN ON THIS PLAT ARE EXPRESSED IN FEET AND DECIMAL PARTS  
THEREOF. ALL BEARINGS ARE TO AN ASSUMED MERIDIAN AND ARE USED TO INDICATE  
ANGLES ONLY. PERMANENT MONUMENTS WERE FOUND OR SET AT ALL POINTS  
INDICATED HEREON. ALL OF WHICH I CERTIFY TO BE CORRECT.

DATE: JULY, 1997

*James A. Resar*  
JAMES A. RESAR, P.E.  
REG. OHIO SURVEYOR #6361



PPN 04-00-015-110-061  
MUELLER'S QUALITY CONST., INC.  
VOL. 1141, PG. 309



#22430  
APPROVED  
LORAIN CO.  
MAP DEPT  
DATE 2/9/98  
PAGE 400-0156  
BY K. Colbert

**J.A.R. Engineering  
& Surveying, Inc.**

CONSULTING ENGINEERS / SURVEYORS  
24629 DETROIT ROAD WESTLAKE, OHIO 44145  
Phone: (216)-871-8345