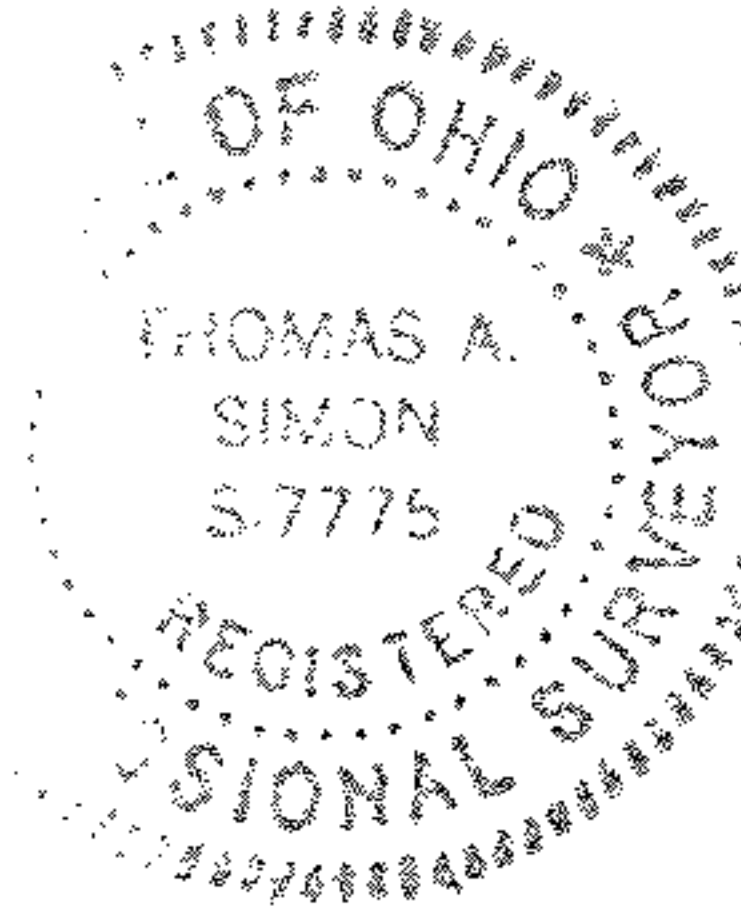


GRISWOLD ROAD (60')

DIMENSIONS SHOWN ON THIS PLAT ARE EXPRESSED IN FEET AND DECIMAL PARTS THEREOF, ALL BEARINGS ARE TO AN ASSUMED MERIDIAN AND ARE USED TO INDICATE ANGLES ONLY. PERMANENT MONUMENTS WERE FOUND OR SET AT ALL POINTS INDICATED HEREON, ALL OF WHICH I CERTIFY TO BE CORRECT.



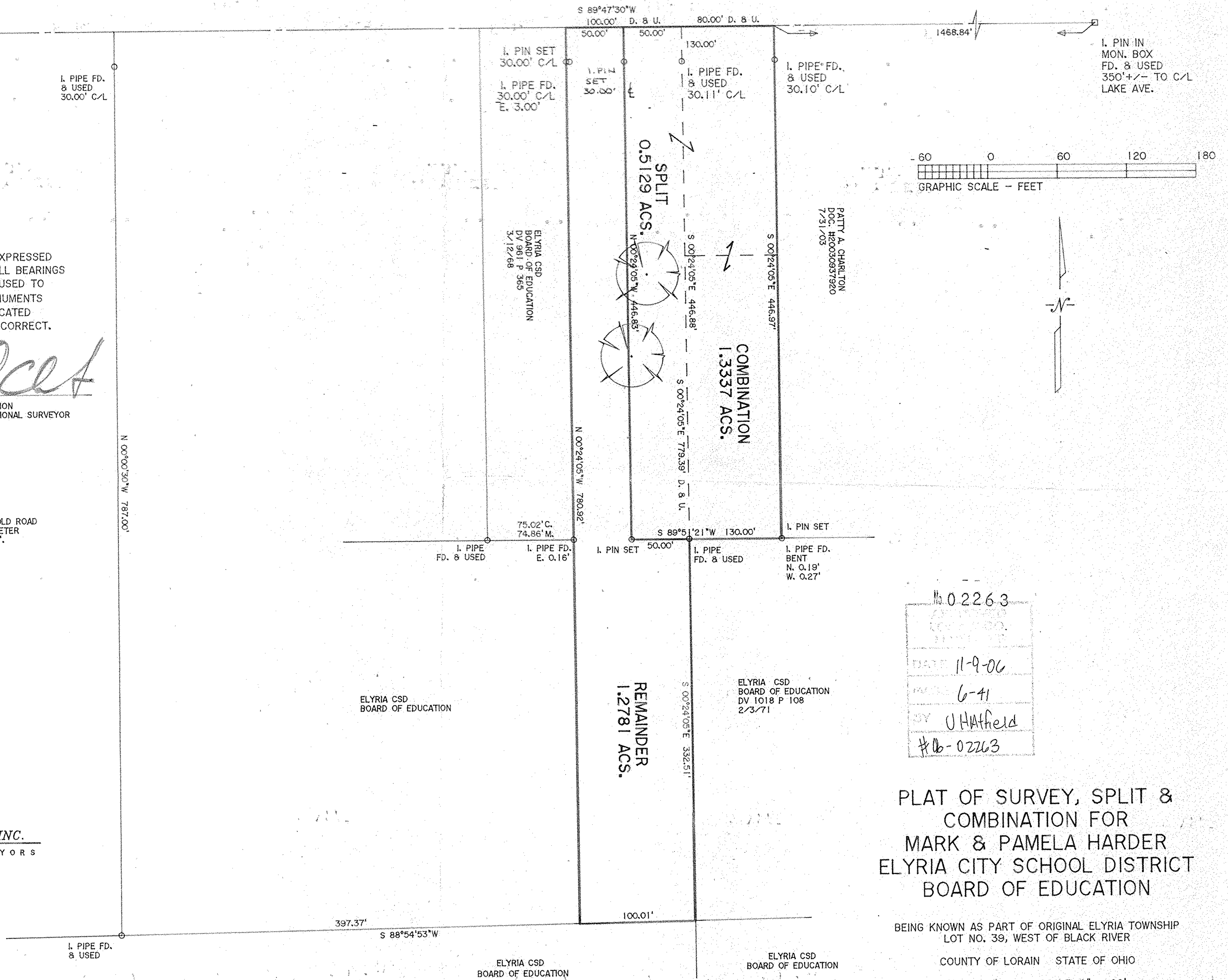
*Thomas A. Simon*  
 THOMAS A. SIMON  
 REG. PROFESSIONAL SURVEYOR  
 NO. S-7775

BASIS OF BEARINGS IS THE CENTERLINE OF GRISWOLD ROAD  
 N 89°47'30" EAST. IRON PINS SET ARE 5/8" DIAMETER  
 30" LONG WITH PLASTIC CAPS "T. SIMON, S-7775".

**THOMAS SIMON & ASSOCIATES, INC.**  
 PROFESSIONAL LAND SURVEYORS

150 SOUTH OLIVE STREET  
 ELYRIA, OHIO 44035

(440) 327-2925  
 FAX 327-2964



No. 02263  
 DATE 11-9-06  
 BY J. Hatfield  
 #06-02263

PLAT OF SURVEY, SPLIT &  
 COMBINATION FOR  
 MARK & PAMELA HARDER  
 ELYRIA CITY SCHOOL DISTRICT  
 BOARD OF EDUCATION

BEING KNOWN AS PART OF ORIGINAL ELYRIA TOWNSHIP  
 LOT NO. 39, WEST OF BLACK RIVER  
 COUNTY OF LORAIN STATE OF OHIO  
 AUGUST, 2006 SCALE: 1" = 60'

06-24-039-00-076 → 078