

NORFOLK SOUTHERN RAILWAY COMPANY

REMAINDERS

- 012
5.52

- 010
4.73 A.

- 050
3.00 A.

- 048
1.08 A.

- 008 489.21
6.63 A. - 011 364.02
11256
- 007 0.73 A. P.P.B.

- 009 6.58 A. - 013 7.95 A.

- 006 9.41 A.

- 049 5.91 A.

- 047 5.06 A.

- 027 7.55 A.

- 051 13.59 A.

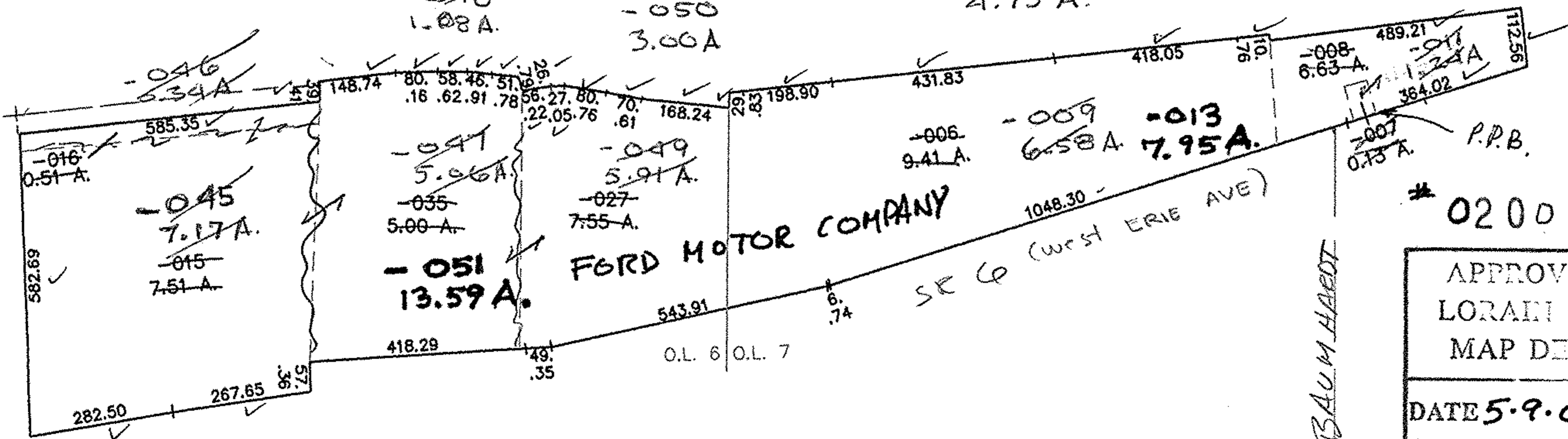
- 045 7.17 A.

- 015 7.51 A.

- 016 0.51 A.

FORD MOTOR COMPANY

SE 6 (West ERIE AVE)



* 0200992

APPROVED
LORAIN CO.
MAP DEPT

DATE 5-9-02

PAGE: 1-C of 1-D

BY T. McMan

* 02-00992

BAUMHARDT

007-101-013
01-00-006-101-027 051