

23107  
P.D. NO.

JMA  
N/W DESIGNER

RIGHT OF WAY PLAN  
STA. 29+40 TO STA. 34+70

LOR-CR50-0.34

16 / 18  
126 / 128

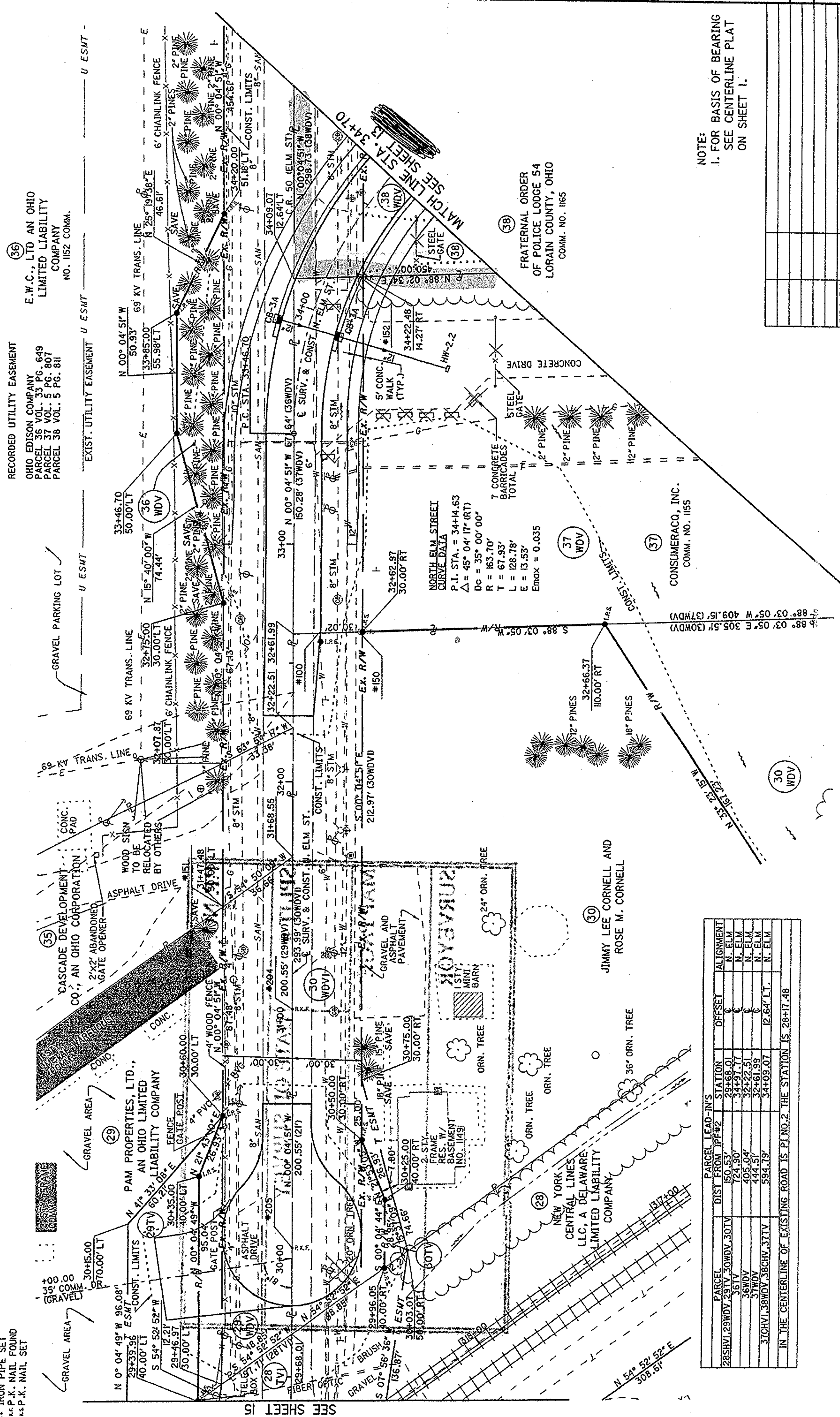
VILLAGE OF GRAFTON  
T5N, R16W  
OF THE CONNECTICUT WESTERN RESERVE  
EATON TOWNSHIP  
LORAIN COUNTY

**STRUCTURE KEY**

- RESIDENTIAL
- COMMERCIAL
- OUT-BUILDING
- SCHOOL

**MONUMENT LEGEND**

- EXISTING R/W MONUMENT BOX FOUND
- PROPOSED R/W MONUMENT BOX
- EXISTING CONCRETE MONUMENT FOUND
- PROPOSED CONCRETE MONUMENT
- RAILROAD SPIKE FOUND
- RAILROAD SPIKE SET
- IRON PIN FOUND/ NO ID CAP AS NOTED
- IRON PIN FOUND W/ ID CAP AS NOTED
- IRON PIPE FOUND AS NOTED
- IRON PIPE SET
- P.K. NAIL FOUND
- P.K. NAIL SET



NOTE:  
1. FOR BASIS OF BEARING  
SEE CENTERLINE PLAT  
ON SHEET 1.

PARCEL	PARCEL LEAD-INS	STATION	ALIGNMENT	OFFSET
28SHV1.29WDV.29TV.30WDV.30TV	150.53'	29+68.01	N. ELM	0
36TV	724.90'	34+97.77	N. ELM	0
36WDV	405.04'	32+22.51	N. ELM	0
37WDV	444.51'	32+61.99	N. ELM	0
37CHV1.38WDV.38CHV.37TV	594.79'	34+09.07	N. ELM	12.64' LT.

IN THE CENTERLINE OF EXISTING ROAD IS P.I. NO. 2 THE STATION IS 28+17.48

REV. BY	DATE	DESCRIPTION

RECORDED UTILITY EASEMENT  
OHIO EDISON COMPANY  
PARCEL 36 VOL. 33 PG. 649  
PARCEL 37 VOL. 5 PG. 807  
PARCEL 38 VOL. 5 PG. 811  
NO. 1152 COMM.

RECORDED UTILITY EASEMENT  
E.W.C., LTD AN OHIO  
LIMITED LIABILITY  
COMPANY  
NO. 1152 COMM.

NORTH ELM STREET  
CURVE DATA  
P.I. STA. = 34+14.63  
Δ = 45° 04' 17" (RT)  
DC = 35° 00' 00"  
R = 163.70'  
T = 67.93'  
L = 128.78'  
E = 13.53'  
Emax = 0.035

FRATERNAL ORDER  
OF POLICE LODGE 54  
LORAIN COUNTY, OHIO  
COMM. NO. 1165

CONSUMERACO, INC.  
COMM. NO. 1155

JIMMY LEE CORNELL AND  
ROSE M. CORNELL

SEE SHEET 15  
MATCH LINE STA. 29+40

SEE SHEET 13  
MATCH LINE STA. 34+70