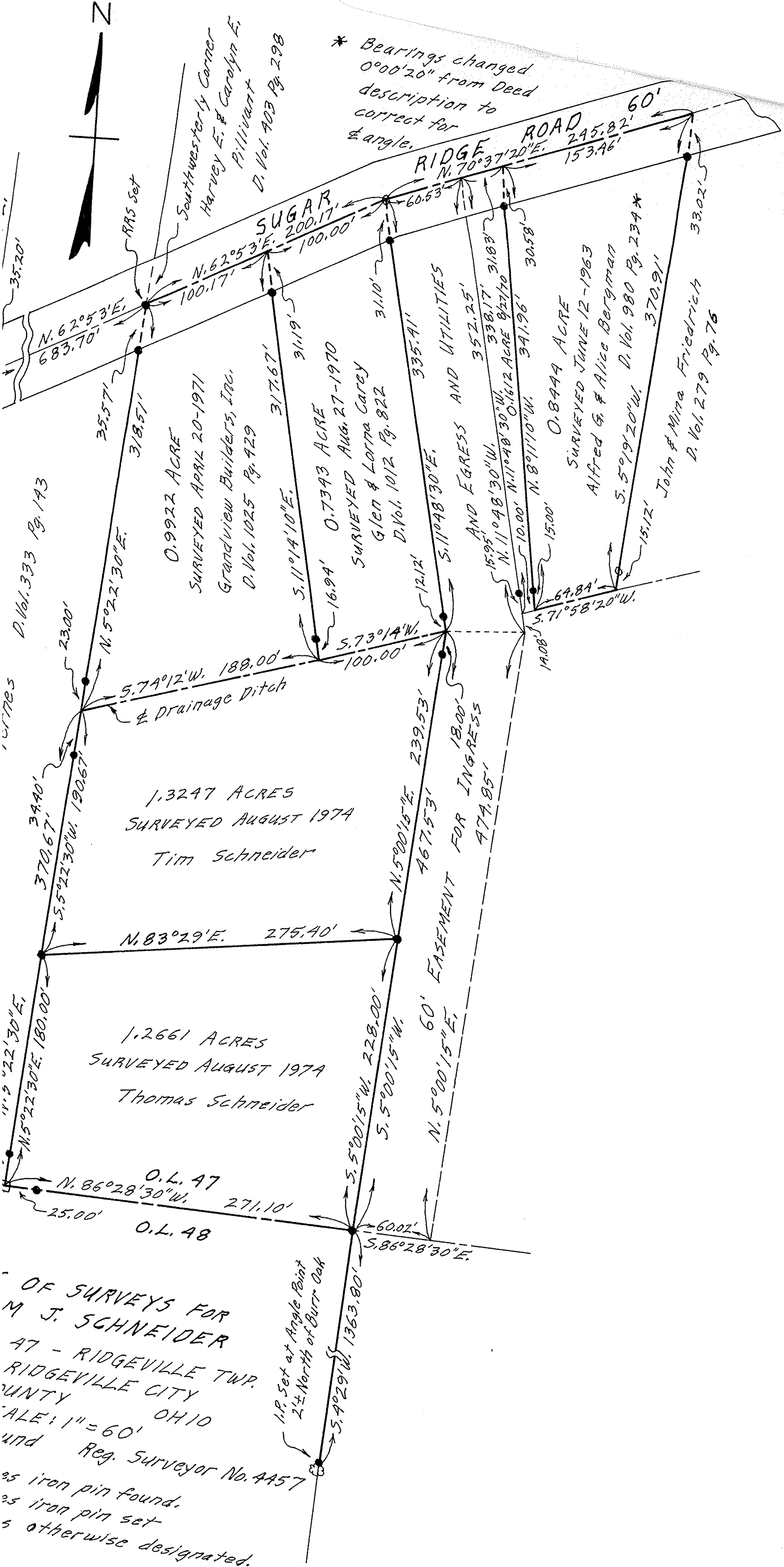




* Bearings changed
0°00'20" from Deed
description to
correct for
angle.



D. Vol. 333 Pg. 143

0.9922 ACRE
SURVEYED APRIL 20-1971
Grandview Builders, Inc.
D. Vol. 1025 Pg. 429

0.7343 ACRE
SURVEYED AUG. 27-1970
Glen & Lorna Carey
D. Vol. 1012 Pg. 822

1.3247 ACRES
SURVEYED AUGUST 1974
Tim Schneider

1.2661 ACRES
SURVEYED AUGUST 1974
Thomas Schneider

O.L. 47
O.L. 48

0.8444 ACRE
SURVEYED JUNE 12-1963
Alfred G. & Alice Bergman
D. Vol. 980 Pg. 234*

John & Mina Friedrich
D. Vol. 279 Pg. 76

OF SURVEYS FOR
M. J. SCHNEIDER
47 - RIDGEVILLE TWP.
RIDGEVILLE CITY
COUNTY OHIO
SCALE: 1" = 60'
and
Reg. Surveyor No. 4457
as iron pin found.
as iron pin set
otherwise designated.

I.P. set at Angle Point
2 1/4 North of Burr Oak

RIDGE ROAD
N. 70°37'20"E. 245.82'
153.46'

SUGAR
N. 62°53'E. 200.17'
100.00'

N. 62°53'E. 683.70'
N. 5°22'30"E. 35.571'
318.571'

N. 5°22'30"E. 23.00'
5.74°12'W. 188.00'

370.67'
39.40'
5.5°22'30"W. 190.67'

N. 83°29'E. 275.40'

N. 5°00'15"W. 228.00'
5.5°00'15"W.

25.00'

5.4°29'W. 1363.80'

5.86°28'30"E.

317.67'
311.9'

16.94'

5.73°14'W. 100.00'

467.53'
N. 5°00'15"E. 239.53'

18.00'

60.02'

60.53'

31.10'

335.41'

352.25'

338.17'

391.96'

30.58'

15.95'

15.00'

64.84'

14.08'

33.02'

AND EGRESS AND UTILITIES

AND EGRESS

FOR INGRESS

60' EASEMENT

60'

60'

60'

60'

60'