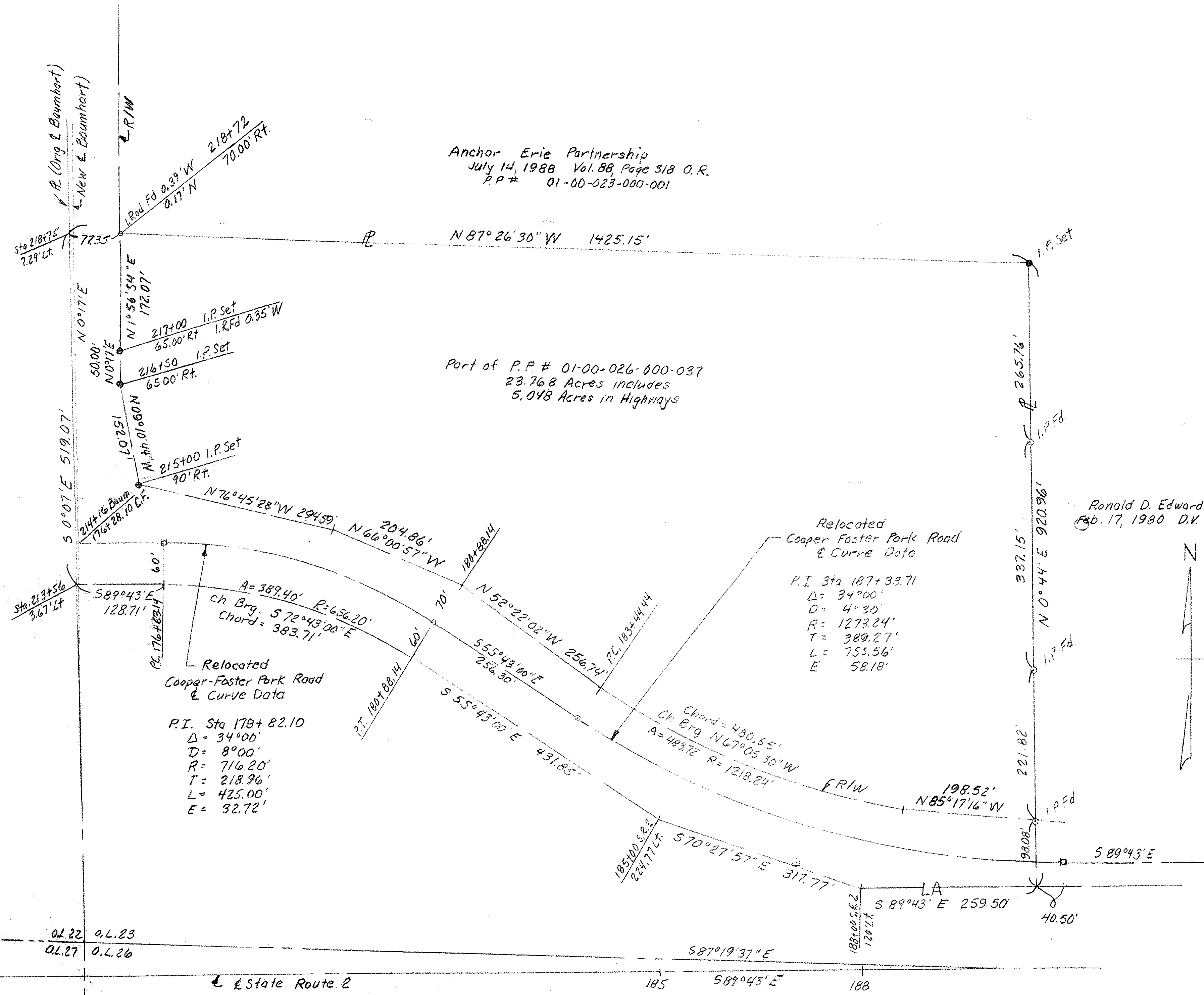


Anchor Erie Partnership
 July 14, 1988 Vol. 88, Page 318 O.R.
 P.P.# 01-00-023-000-001

Part of P.P.# 01-00-026-000-037
 23.768 Acres includes
 5.048 Acres in Highways

Ronald D. Edwards et al
 Feb. 17, 1980 D.V. 1254, Page 852



Relocated
 Cooper-Foster Park Road
 & Curve Data

P.I. Sta 178+82.10
 $\Delta = 34^{\circ}00'$
 $D = 8^{\circ}00'$
 $R = 716.20'$
 $T = 218.96'$
 $L = 425.00'$
 $E = 32.72'$

Relocated
 Cooper Foster Park Road
 & Curve Data

P.I. Sta 187+33.71
 $\Delta = 34^{\circ}00'$
 $D = 4^{\circ}30'$
 $R = 1273.24'$
 $T = 389.27'$
 $L = 755.56'$
 $E = 58.18'$

PLAT OF SURVEY FOR
 RUTH A. HITE

ORIGINAL LOT 23 BROWNHELM TWP.
 LORAIN COUNTY OHIO

Scale 1"=100'
 January 17, 1989
 McGlinchy & Associates Amherst, Ohio
 Job # 898772

See Plat Volume 24, Page 2 for Control (S.R.2, Baumhart, Relocated Cooper Foster Park Road)