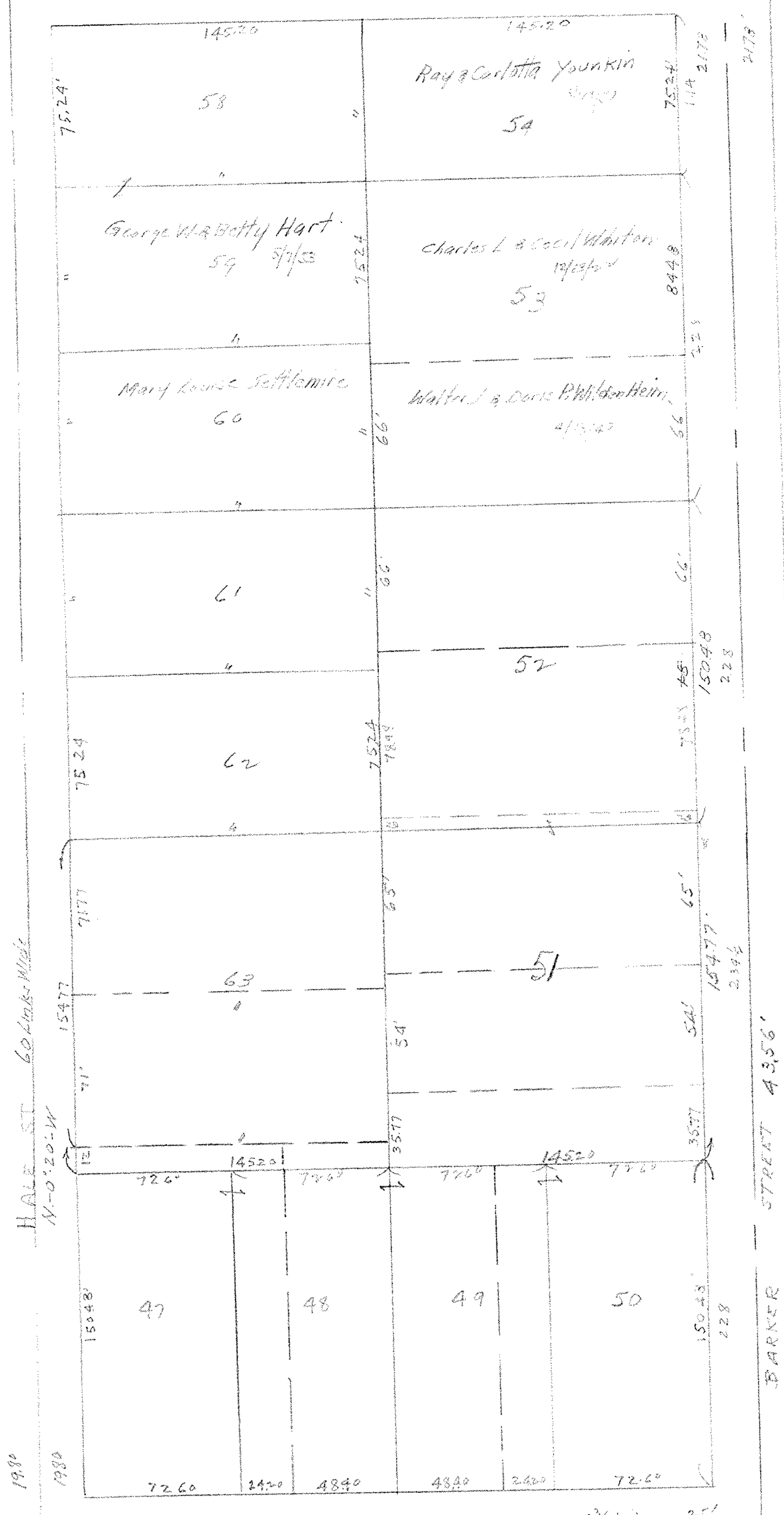


Clay St. 66'  
40 Rods Wide



Hale St. 60 Rods Wide  
N-0°20'-W

Taylor St. 50'  
N-89°50'-E

Barker Street 43.56'

Wade North Tripp & DeWolf Addn. Vol 1 P 9

Orig village plat  
Vol 1 P 6

Herrick Ave. East. N-89°E