

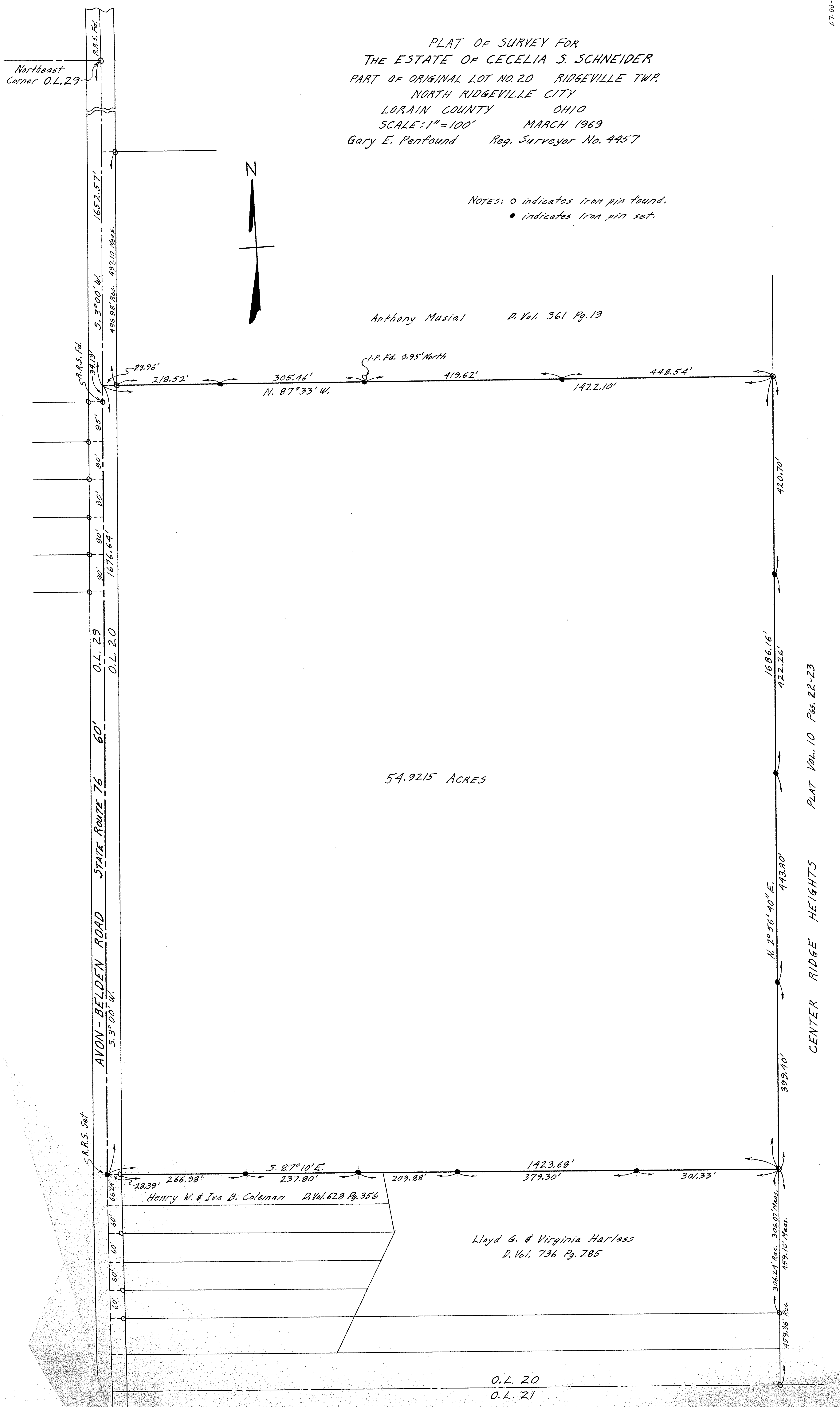
PLAT OF SURVEY FOR
 THE ESTATE OF CECELIA S. SCHNEIDER
 PART OF ORIGINAL LOT NO. 20 RIDGEVILLE TWP.
 NORTH RIDGEVILLE CITY
 LORAIN COUNTY OHIO
 SCALE: 1" = 100' MARCH 1969
 Gary E. Penfound Reg. Surveyor No. 4457

NOTES: ○ indicates iron pin found.
 ● indicates iron pin set.

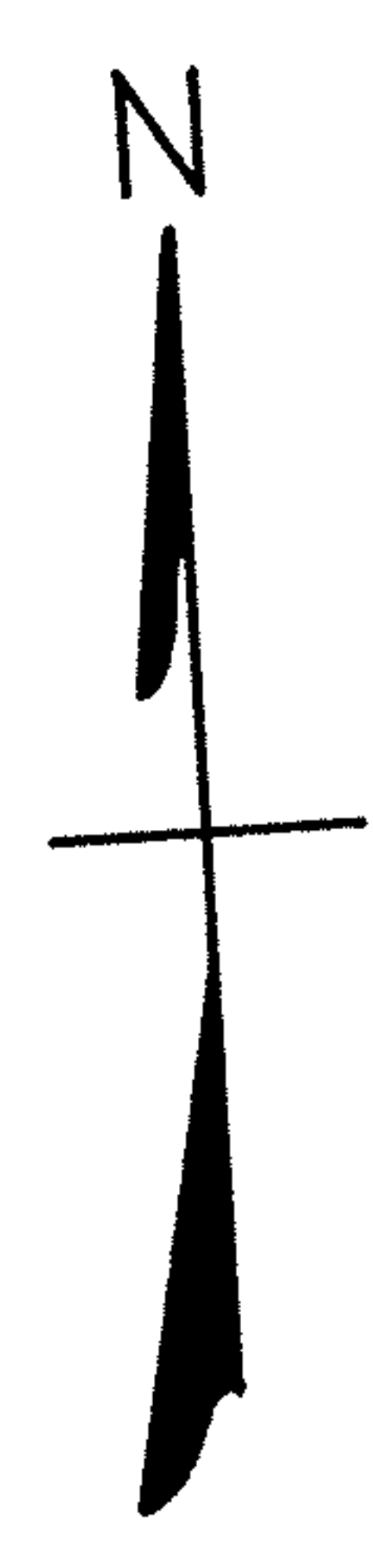
Anthony Musial D. Vol. 361 Pg. 19

54.9215 ACRES

CENTER RIDGE HEIGHTS PLAT VOL. 10 Pgs. 22-23



Northeast
 Corner O.L. 29



S.R.S. Fe.
 39.13'

S.R.S. Fe.
 85'

80'

80'

80'

80'

80'

80'

80'

80'

80'

80'

80'

80'

80'

1652.57'

S. 3°00' W.
 496.88' Rec. 497.10' Meas.

218.52'

305.46'

419.62'

1422.10'

448.54'

29.96'

1. P. Fe. 0.95' North

N. 87°33' W.

1676.64'

85'

80'

80'

80'

80'

29.96'

85'

80'

80'

80'

80'

80'

80'

80'

80'

80'

80'

80'

80'

80'

218.52'

305.46'

419.62'

1422.10'

448.54'

29.96'

1. P. Fe. 0.95' North

N. 87°33' W.

1676.64'

85'

80'

80'

80'

80'

80'

305.46'

419.62'

1422.10'

448.54'

29.96'

1. P. Fe. 0.95' North

N. 87°33' W.

1676.64'

85'

80'

80'

80'

80'

80'

80'

419.62'

1422.10'

448.54'

29.96'

1. P. Fe. 0.95' North

N. 87°33' W.

1676.64'

85'

80'

80'

80'

80'

80'

80'

80'

1422.10'

448.54'

29.96'

1. P. Fe. 0.95' North

N. 87°33' W.

1676.64'

85'

80'

80'

80'

80'

80'

80'

80'

80'

448.54'

29.96'

1. P. Fe. 0.95' North

N. 87°33' W.

1676.64'

85'

80'

80'

80'

80'

80'

80'

80'

80'

80'

29.96'

1. P. Fe. 0.95' North

N. 87°33' W.

1676.64'

85'

80'

80'

80'

80'

80'

80'

80'

80'

80'

80'

1. P. Fe. 0.95' North

N. 87°33' W.

1676.64'

85'

80'

80'

80'

80'

80'

80'

80'

80'

80'

80'

80'

448.54'

29.96'

1. P. Fe. 0.95' North

N. 87°33' W.

1676.64'

85'

80'

80'

80'

80'

80'

80'

80'

80'

80'

29.96'

1. P. Fe. 0.95' North

N. 87°33' W.

1676.64'

85'

80'

80'

80'

80'

80'

80'

80'

80'

80'

80'

448.54'

29.96'

1. P. Fe. 0.95' North

N. 87°33' W.

1676.64'

85'

80'

80'

80'

80'

80'

80'

80'

80'

80'

29.96'

1. P. Fe. 0.95' North

N. 87°33' W.

1676.64'

85'

80'

80'

80'

80'

80'

80'

80'

80'

80'

80'

448.54'

29.96'

1. P. Fe. 0.95' North

N. 87°33' W.

1676.64'

85'

80'

80'

80'

80'

80'

80'

80'

80'

80'

29.96'

1. P. Fe. 0.95' North

N. 87°33' W.

1676.64'

85'

80'

80'

80'

80'

80'

80'

80'

80'

80'

80'

448.54'

29.96'

1. P. Fe. 0.95' North

N. 87°33' W.

1676.64'

85'

80'

80'

80'

80'

80'

80'

80'

80'

80'

29.96'

1. P. Fe. 0.95' North

N. 87°33' W.

1676.64'

85'

80'

80'

80'

80'

80'

80'

80'

80'

80'

80'

448.54'

29.96'

1. P. Fe. 0.95' North

N. 87°33' W.

1676.64'

85'

80'

80'

80'

80'

80'