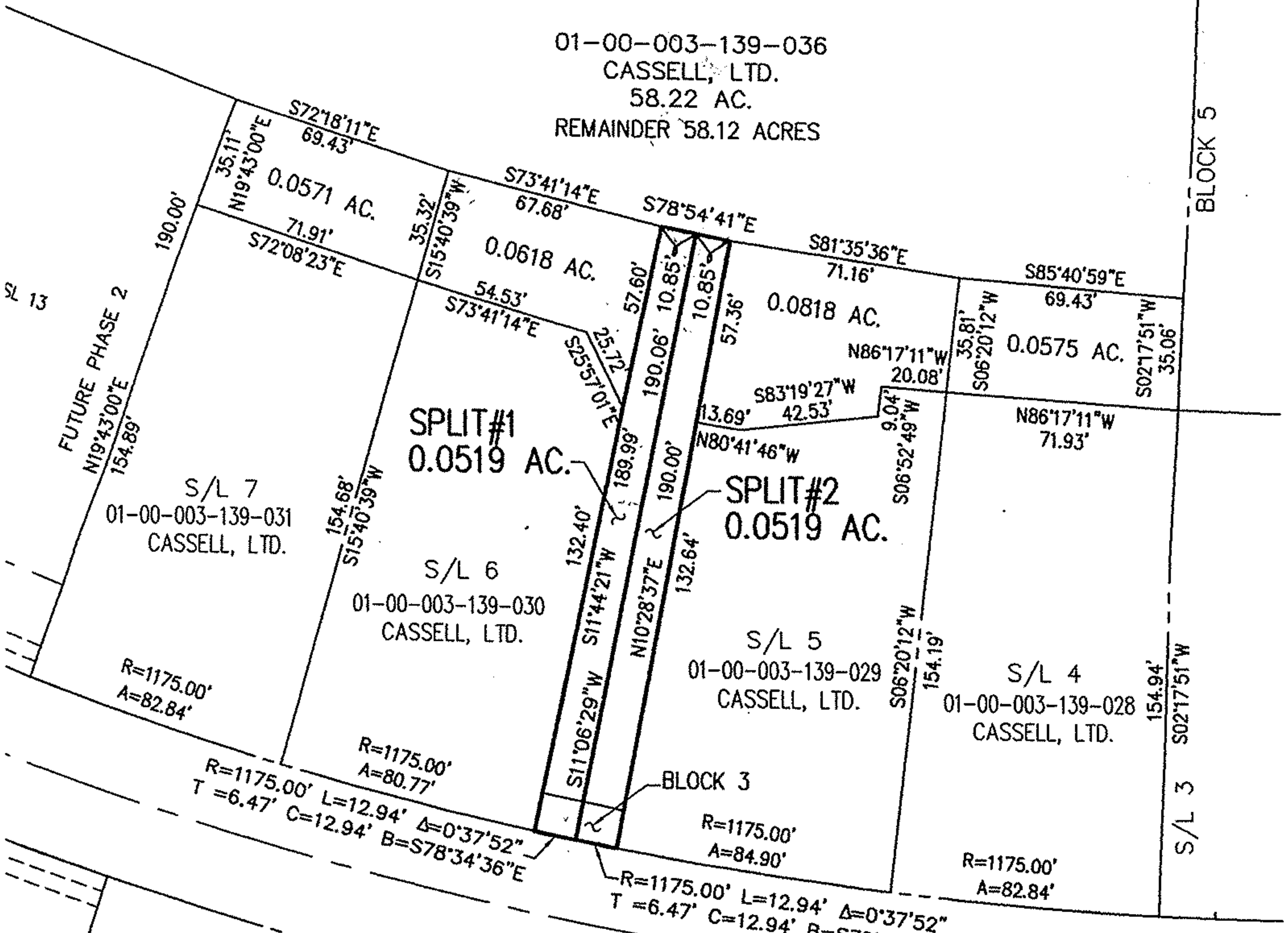


BOUNDARY & LOT SPLIT SURVEY

CITY OF VERMILION ~ LORAIN COUNTY ~ STATE OF OHIO
PART OF ORIGINAL BROWNHelm TOWNSHIP LOT NO. 3
JULY 2004

01-00-003-139-036
CASSELL, LTD.
58.22 AC.
REMAINDER 58.12 ACRES



BLOCK 5

S/L 3 S02°17'51\"W

ELIZABETH DRIVE 50' R/W

S/L 8

NATURES PRESERVE SUBDIVISION NO. 1
PLAT VOL. 67 / PG. 41

PT. BLOCK 1

PT. BLOCK 1



SCALE: 1 in. = 50 ft.

HAYWOOD
Civil Engineering & Land Surveying
"Committed to Service and Quality"

630 Cleveland Street Office: (440) 365-9831
Elyria, Ohio 44035 Fax: (440) 365-3426
www.haywoodcivilengineering.com