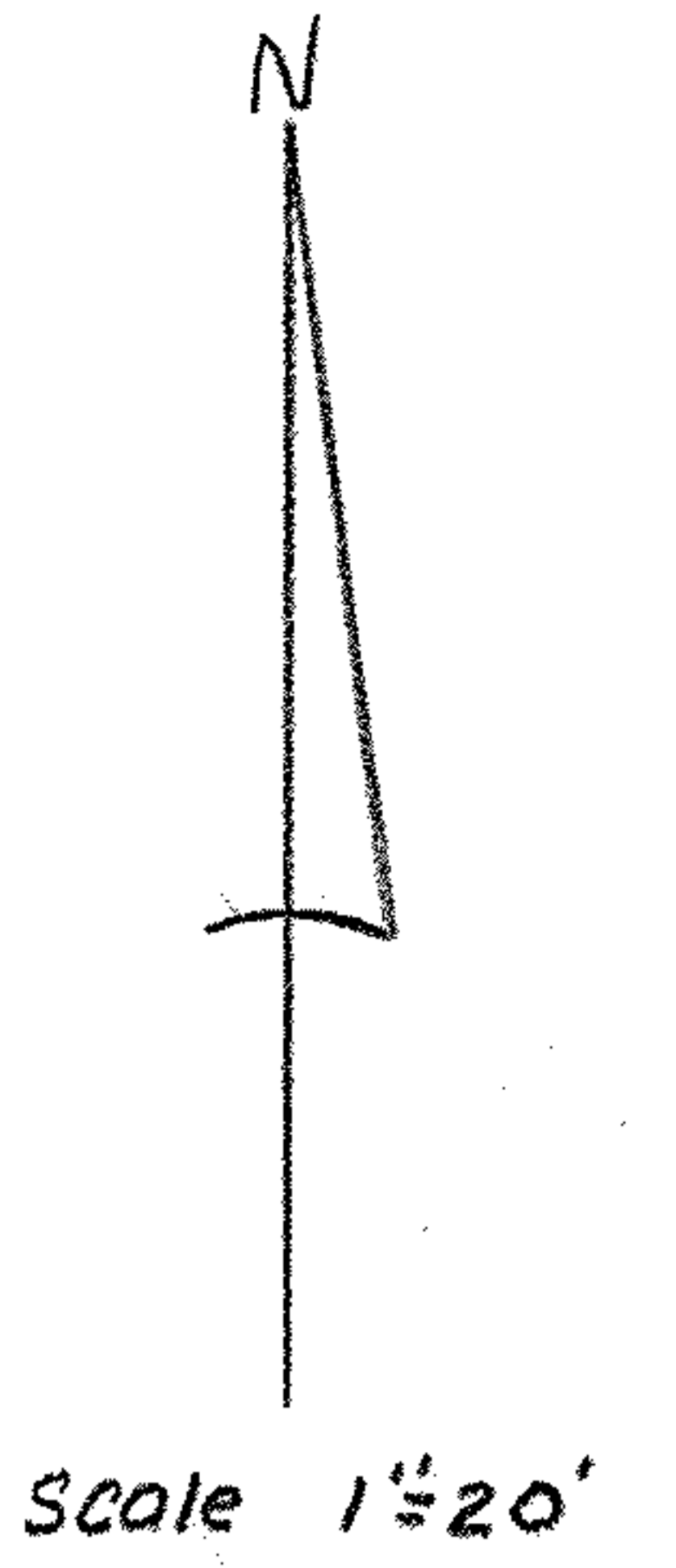


RP #05-00-043-101-010  
STANDEN, ALYCE F.



RP #05-00-043-101-013  
CITY OF AMHERST

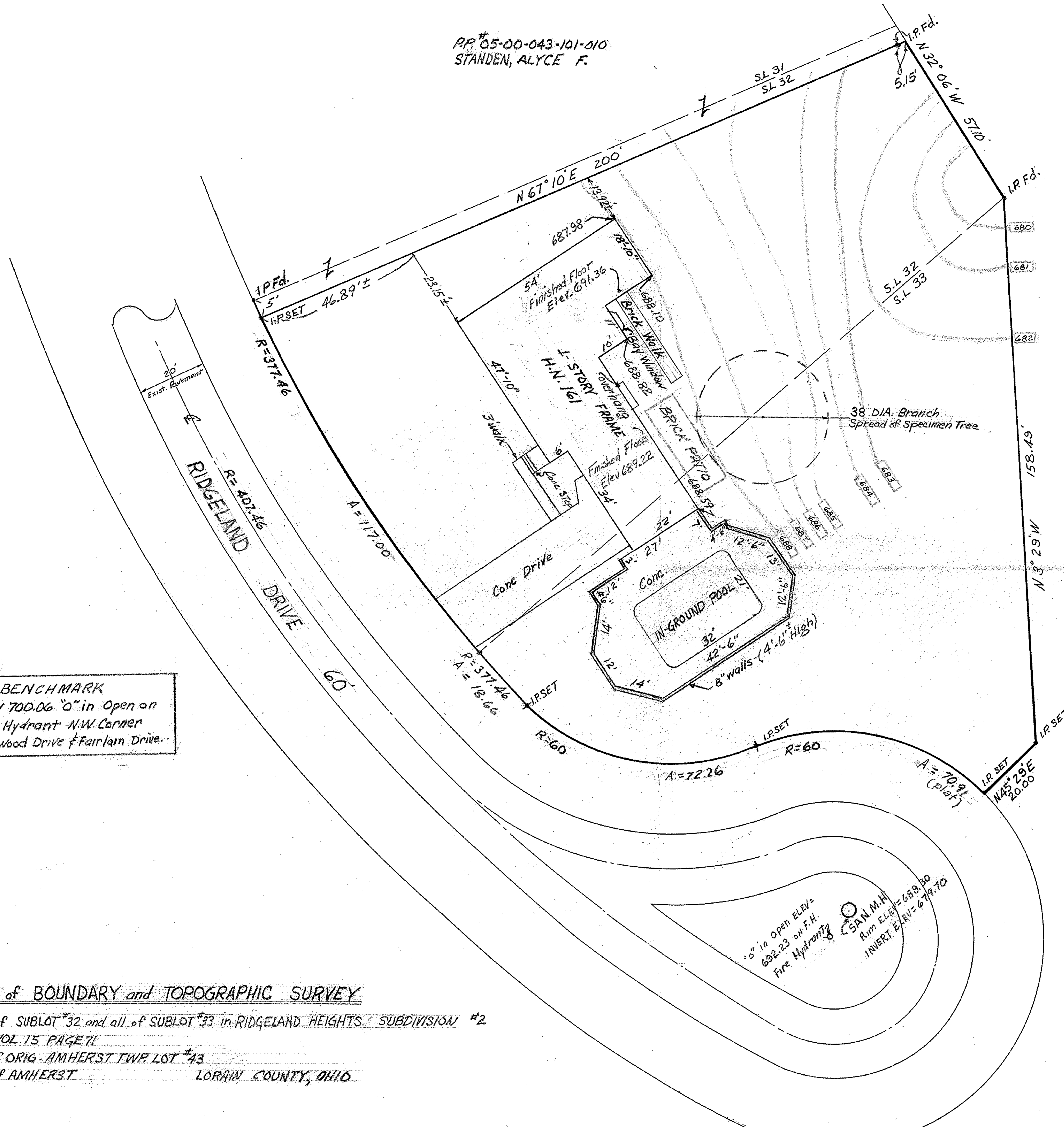
**BENCHMARK**  
Elev 700.06 "0" in Open on  
Fire Hydrant N.W. Corner  
Edgewood Drive & Fairlawn Drive.

AREA of S.L. #32 is 0.386 AC. (14592.6 #)  
" of S.L. #33 is 0.335 AC. (16814.16 #)  
TOTAL 0.721 AC. (31406.76 #)

MAP of BOUNDARY and TOPOGRAPHIC SURVEY

Part of SUBLOT #32 and all of SUBLOT #33 in RIDGELAND HEIGHTS SUBDIVISION #2  
PLAT VOL. 15 PAGE 71  
Part of ORIG. AMHERST TWP. LOT #43  
CITY OF AMHERST LORAIN COUNTY, OHIO

**McGLINCHY and ASSOCIATES**  
PROFESSIONAL ENGINEERS and SURVEYORS  
ELYRIA OHIO  
FEBRUARY, 1979 #794808



A = 72.26  
R = 60  
A = 70.91 (plat)  
N 45° 29' E 20.00  
I.P. SET

6" in Open Elev = 692.23 on F.H. Fire Hydrant  
SAN. M.H. Rim Elev = 689.30  
INVERT Elev = 679.70